



---

# COVID-19 Update: Fairfax Health District Disease & Vaccination Status and What We Are Learning about Omicron

Fairfax County Health Department  
Dr. Gloria Addo-Ayensu and Dr. Benjamin Schwartz

December 14, 2021



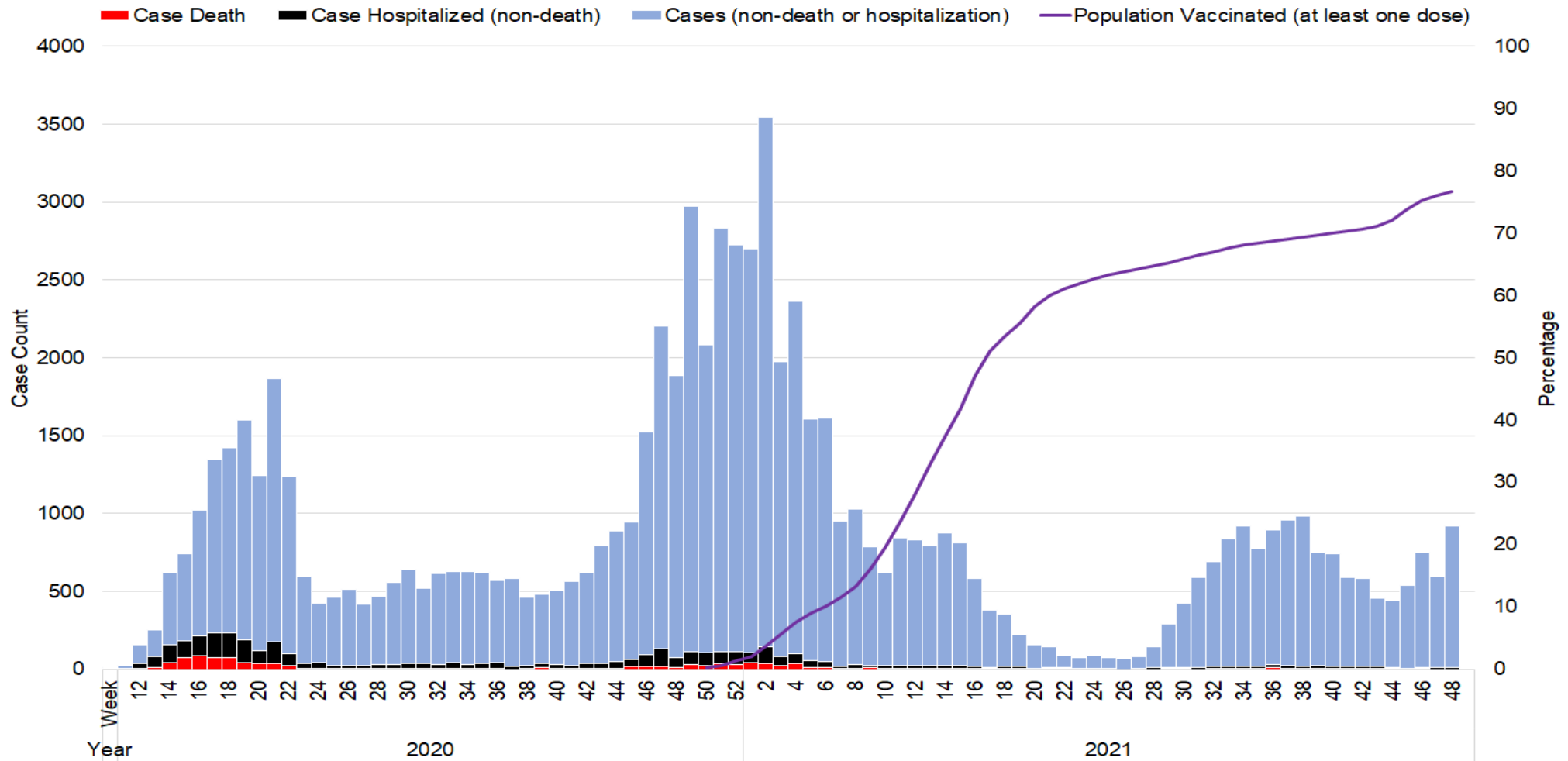
# Topics to Address

---

1. COVID-19 disease
2. COVID-19 vaccination
3. Emergence of the Omicron variant
4. Impact of the Health Department's Community Health Worker program



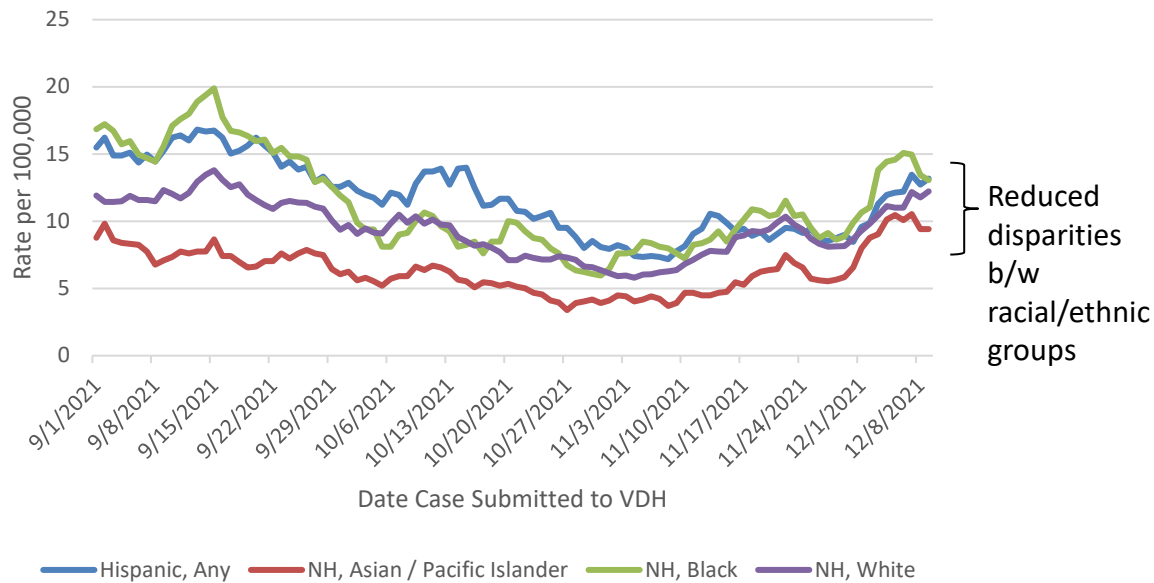
# COVID-19 Disease in Fairfax Health District



# COVID-19 Disease: Who Is Infected?

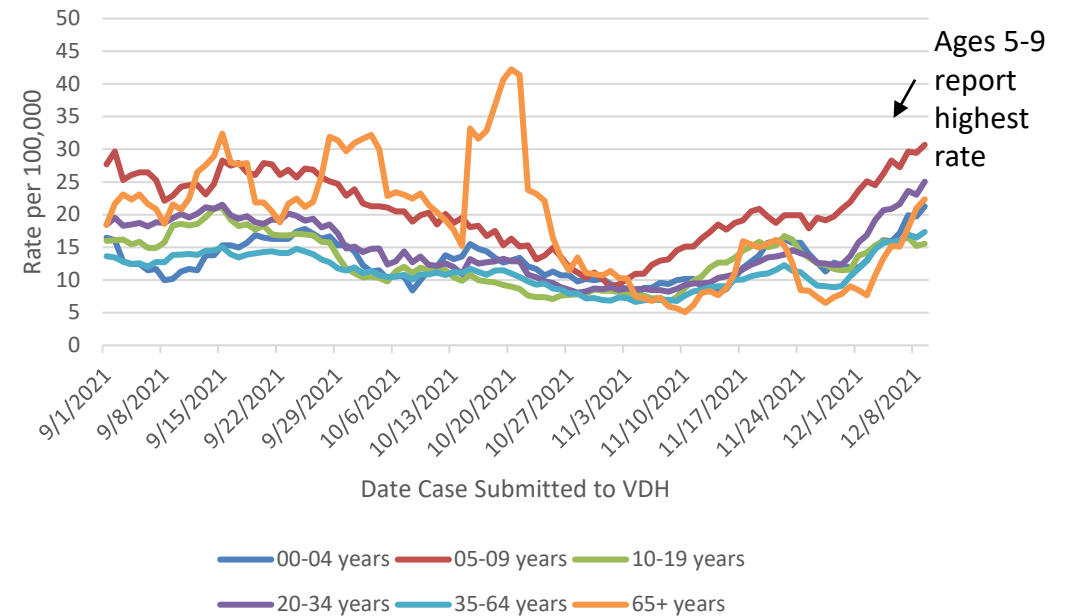
## RACE/ETHNICITY

7 Day Rolling Rate of COVID-19 Cases by Race/Ethnicity



## AGE GROUP

7 Day Rolling Rate of COVID-19 Cases by Age Group

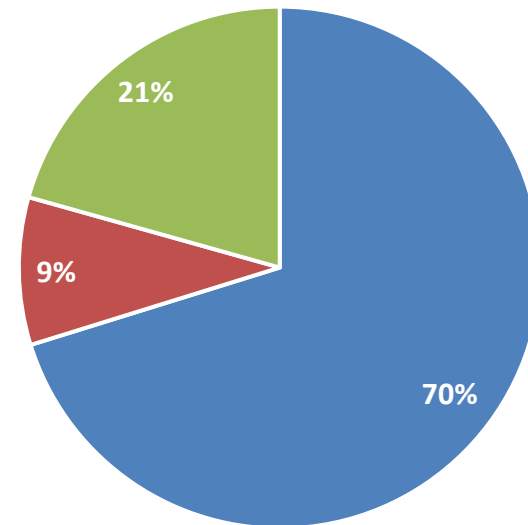


# FCPS School Cases and Contacts

- 1,361 FCPS student cases
  - 0.76% of all students
  - Rate of infection highest in elementary school (2.2-fold rate in HS)
- 6,823 FCPS student contacts
  - 5 contacts per case
  - Quarantine required for 2.5% of all students
  - 1% of quarantined students became cases (tested positive)
- No FCPS school has closed due to COVID-19

COVID-19 Cases by School Level, 2021-22  
School Year

■ Elementary School ■ Middle School ■ High School



# COVID-19 Vaccination Summary



## Fairfax Health District COVID-19 Vaccination Status

(The Fairfax Health District includes Fairfax County and the cities of Fairfax and Falls Church)

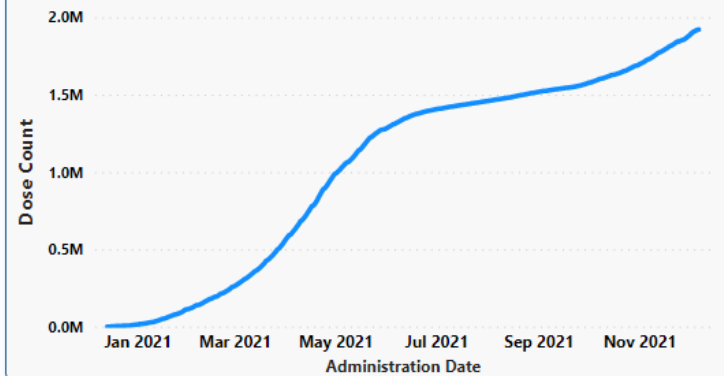
Last Updated: 12/9/2021 11:30:29 AM

### Total Doses Administered

**1,922,013**

Among Fairfax Health District Residents

A running total of all doses\* by the day they were given to Fairfax Health District residents.



\* Includes first, second and third doses

### RECEIVED AT LEAST ONE COVID-19 VACCINE DOSE\*

**910,836**

Count

87.0% of people 18 years and older

77.0% of all Fairfax Health District residents

\* People vaccinated with one dose of a two-dose vaccine or one dose of a single dose vaccine.

### FULLY VACCINATED\*\*

**807,903**

Count

78.8% of people 18 years and older

68.3% of all Fairfax Health District residents

\*\* People vaccinated with two doses of a two-dose vaccine or one dose of a single dose vaccine.

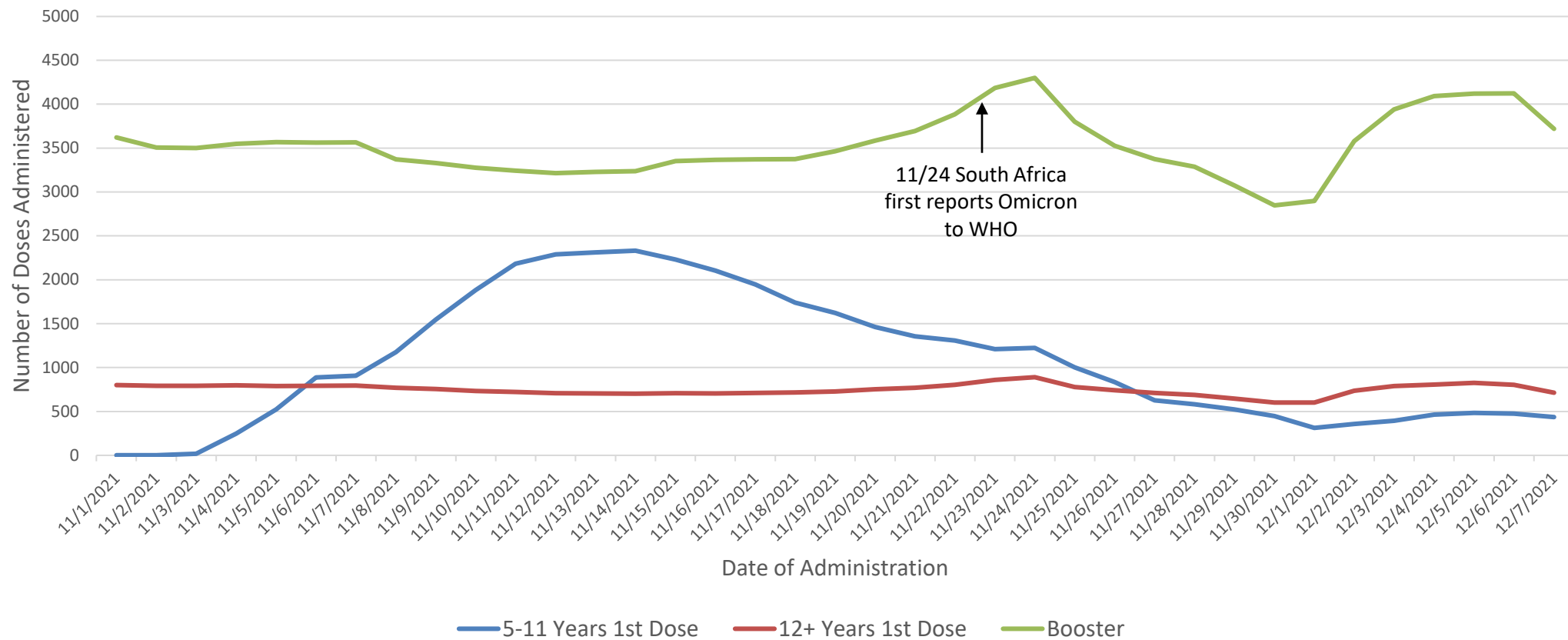
All vaccination data are from the Virginia Department of Health (VDH) - Virginia Immunization Information System. Numbers differ from the VDH vaccination dashboard, which reports data separately for Fairfax County and the cities of Fairfax and Falls Church.

## Vaccination Rates by Age Group

- Ages 5-11: 37%
- Ages 12+: 87%

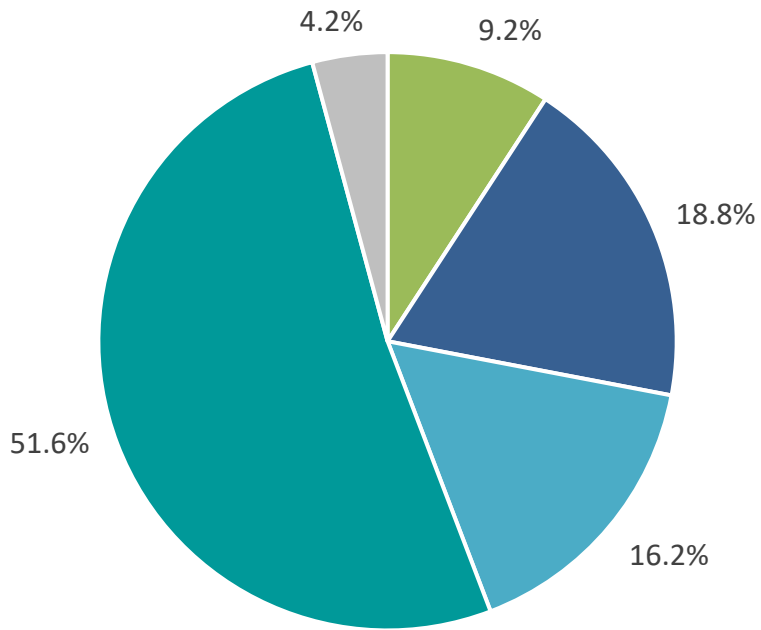
# Trends in Recent COVID-19 Vaccination

## 7 Day Rolling Average of 1<sup>st</sup> Doses and Booster Doses by Administration Date

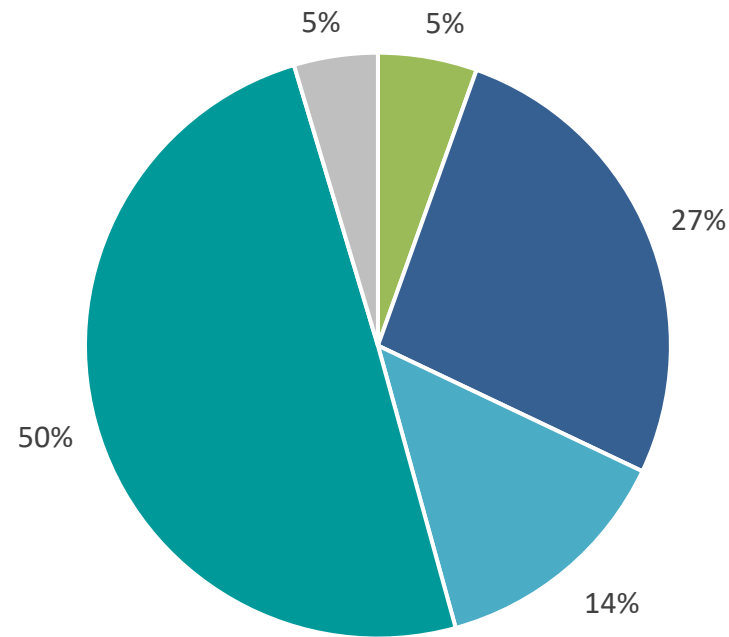


# Percent COVID-19 Vaccination by Race/Ethnicity

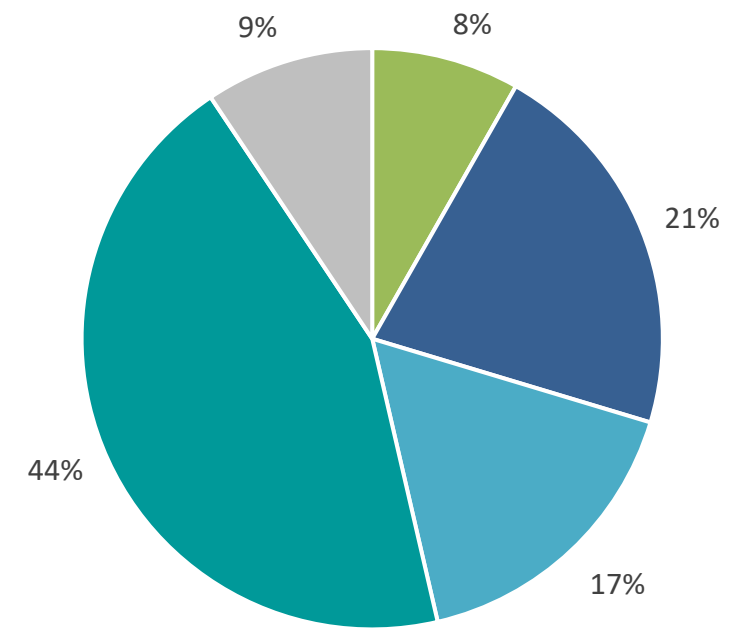
Total Population by Race/Ethnicity, FHD



Percent Vaccinated Ages 5-11 Years



Percent Vaccinated Ages 12+ Years



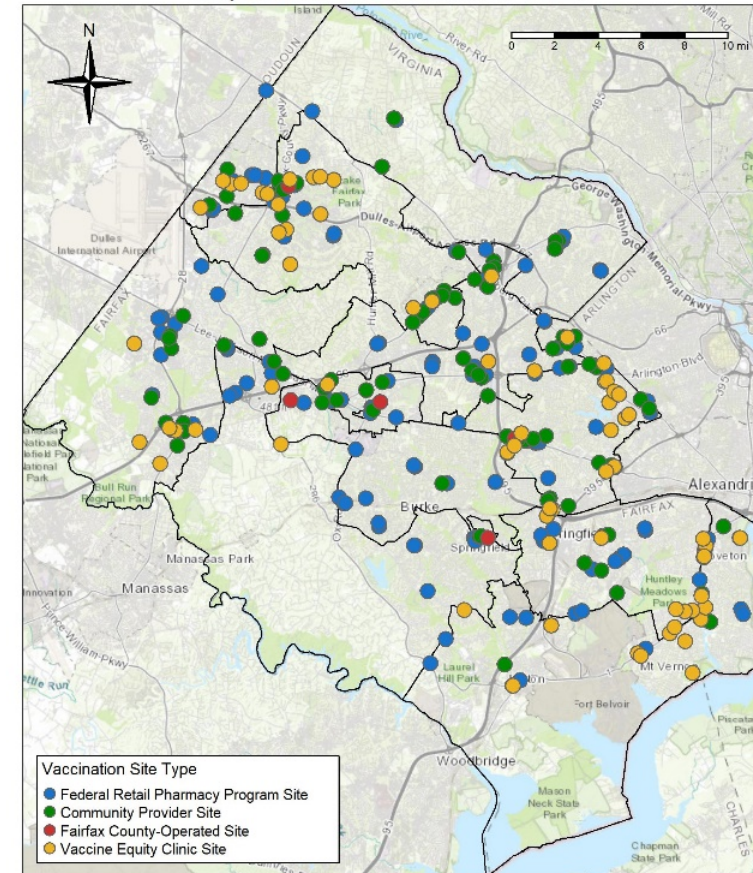
■ African American/Black 
 ■ Asian/PI 
 ■ Hispanic 
 ■ White 
 ■ Other



# Fairfax County Vaccination Sites for All Ages

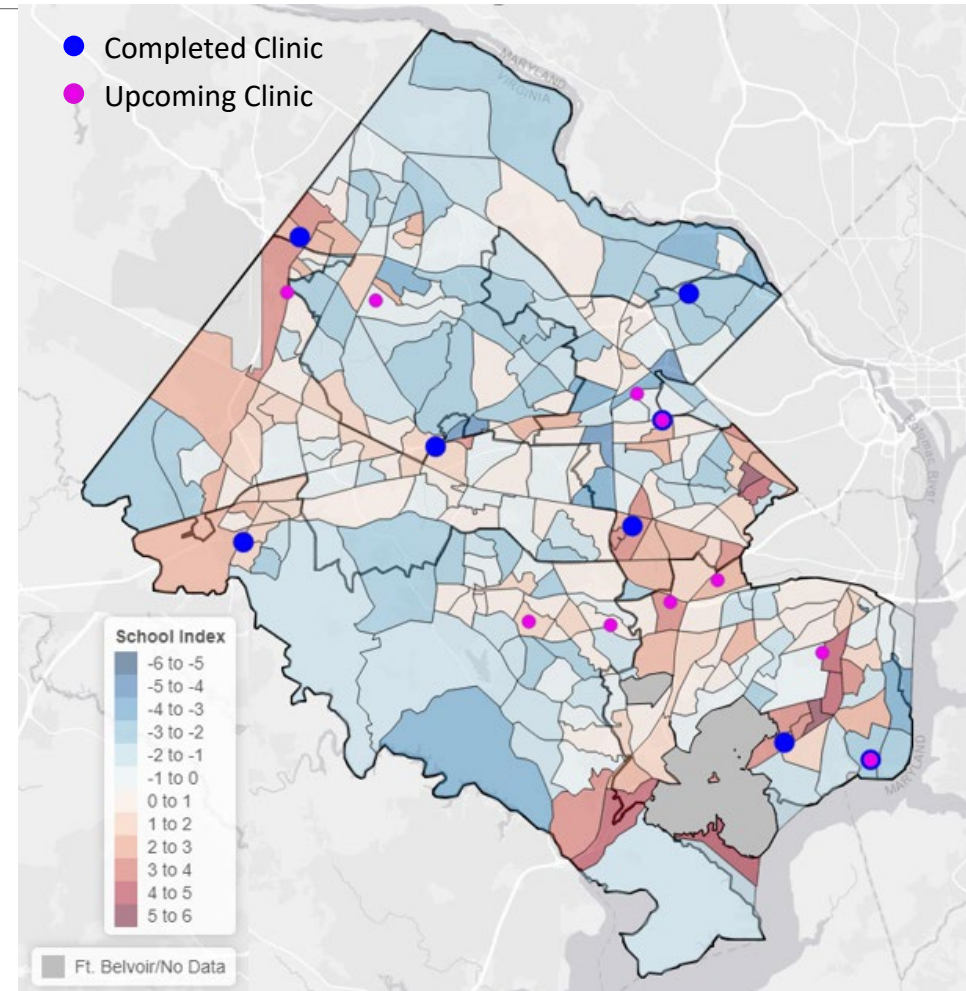
- In September and October, 335 vaccination sites administered doses to Fairfax Health District residents:
  - 147 pharmacy sites
  - 108 healthcare providers
  - 74 equity clinic sites
  - 6 sites operated by Fairfax County
- In November, additional pediatric healthcare providers, Fairfax County Public School clinics, and pediatric equity clinics began administering doses

Fairfax Health District Vaccination Sites, September and October 2021



# Fairfax County Public School Vaccination Sites

- Health Department recommendations to FCPS for location of school-based clinics:
  - Census tract-level index to identify areas of lower COVID-19 vaccination among children ages 5-11, higher social vulnerability, and higher population ages 5-11
  - Geographic balance, and access to transportation



# COVID-19 Cases in South Africa: Emergence of Omicron

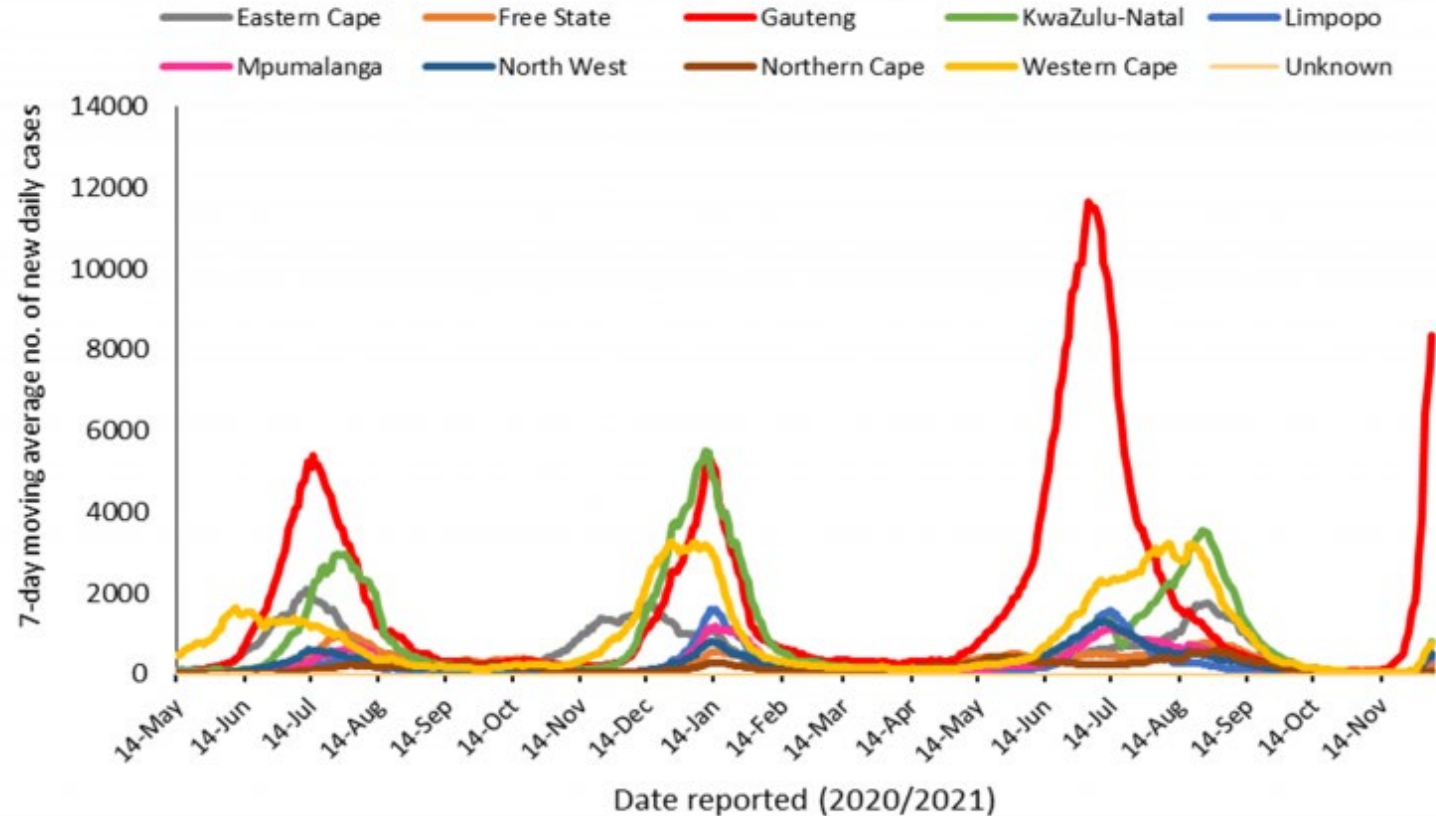
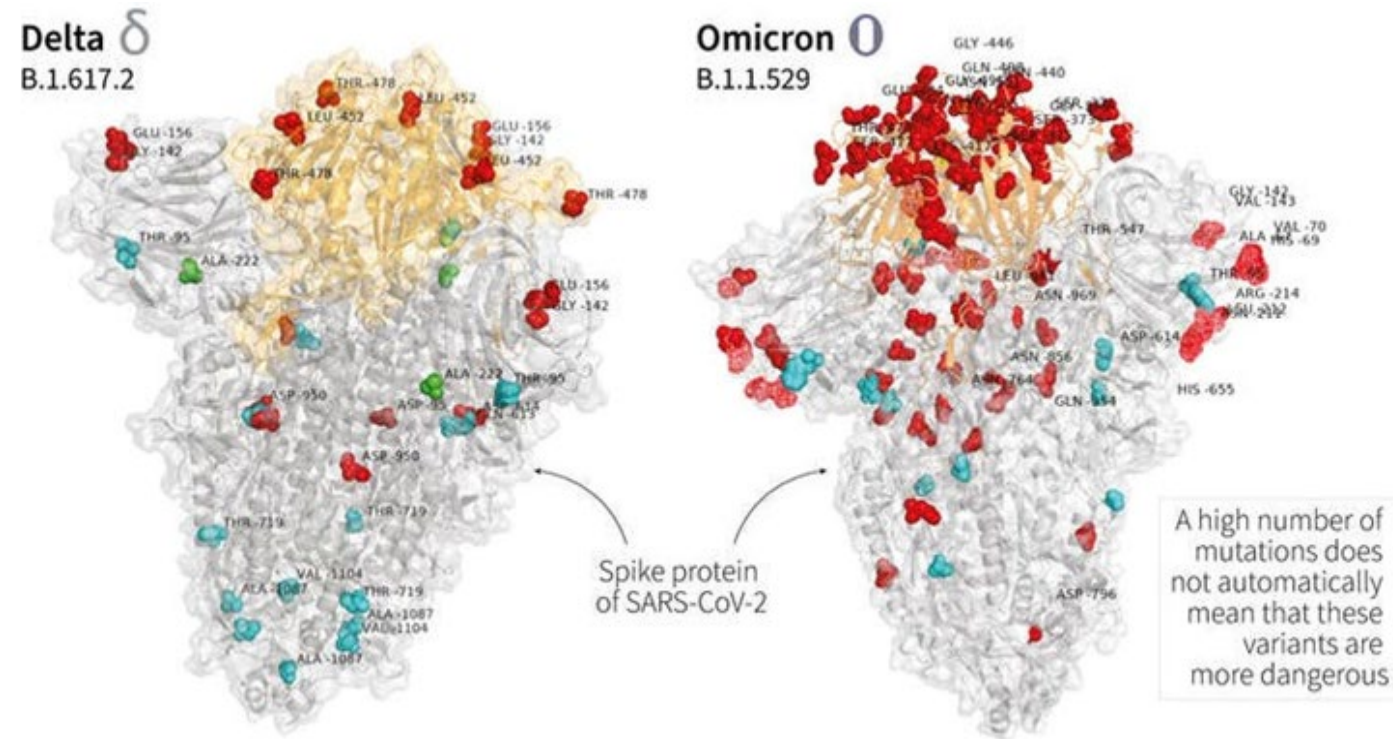


Figure 2. 7-day moving average number of new cases by province and date of reporting, 12 April 2020 to date, South Africa

# COVID-19 Omicron Variant

- Over 30 amino acid changes, three deletions and one insertion
- Known mutations raise concern that virus is more transmissible, reduces neutralization by vaccine and infection induced antibodies, and resists monoclonal antibody treatment





# What We Are Learning about Omicron

---

- Transmissibility and growth advantage
- Effect of vaccine derived and natural immunity
- Infection severity

# Approaches to Mitigate Potential Impact of Omicron

- Full vaccination *including booster dose*
- Layered mitigation strategies
  - Physical distancing / avoid crowded indoor settings
  - Good ventilation
  - Appropriate mask wearing
  - Testing – if symptomatic, exposed or before indoor gatherings, especially with high-risk
  - Staying home and away from others if symptomatic
  - Hand hygiene
  - Cleaning frequently touched surfaces
  - After travel, follow CDC guidelines on testing and quarantine





# Community Health Worker (CHW) Program

---

- Support individuals and families affected by isolation and quarantine
  - Referrals to CHWs by case and contact investigators
  - CHW outreach to identify and address needs – most often information, food and groceries, hygiene and cleaning supplied, rent and utilities, testing and support
- Vaccine navigation
  - Meet with people of color and vulnerable individuals to discuss vaccination, address concerns, and assist in scheduling or directing to a nearby vaccination site
  - Aligned with CBOs to increase trust and access to clients, e.g., at food distributions
  - Assist at vaccine equity clinics
  - Program monitoring results:
    - Over 20,000 discussions with County residents
    - Among unvaccinated, over half scheduled or directed to a vaccination site



# CHW Evaluation: Support for Isolation and Quarantine

---

- Surveys completed for 161 randomly selected persons who received CHW services and 179 who reported no need for services
- People receiving CHW services more often cases, Hispanic, female, and older age
- Receipt of CHW services enabled individuals to more often successfully maintain isolation or quarantine
  - 30.1% reduction in the proportion who left home one or more times ( $p=0.02$ )
  - Among those who did leave home, the average number of times was 2.4 for CHW clients vs 6.2 times for controls ( $p=0.001$ )