

# Fairfax County Health Department



Board of Supervisors  
Budget Committee meeting  
March 12, 2019



*Healthy Kids Make Better Students and Better Students  
Make Healthy Communities*



# Models of School Health Services Delivery

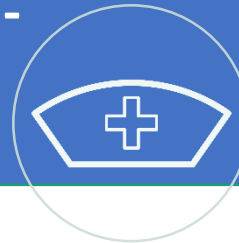
- American Academy of Pediatrics (AAP) and National Association of School Nurses (NASN) endorsed model
- All concerns including emergencies addressed on site by RN
- Can be cost prohibitive

## School Nurse for Every School



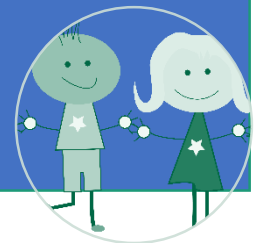
- RN/Health Aide Team
- RN covers 2-3 schools in geographic proximity
- Health Aide in every school
- Emphasis on proper training for Health Aide and school staff

## RN/Trained Para-Professional Model



- School health acuity calculation
- Enhanced RN access for higher need schools and students
- Nurse on site for students with complex needs
- Health aide in low acuity schools
- Also relies on trained health aide and school staff

## Acuity Based Model



# Supporting School Health – A Blended Public Health Model

## SCHOOL HEALTH AIDE (SHA)

- Administers medications
- Responds to health emergencies
- Provides care to students based on standard protocols
- Monitors absence data
- Conducts vision and hearing screening
- Refers student health concerns to the PHN
- 1 SHA : 1 School

## PUBLIC HEALTH NURSE (PHN)

- Supervises and trains the SHA
- Coordinates care and develops a care plan to support the student with a health condition
- Provides training to school staff
- Investigates reports of communicable disease and increased absences
- Promotes health and wellness in the school community
- 1 PHN : 3 schools
- Goal for a Nurse to Student Ratio 1:2,000



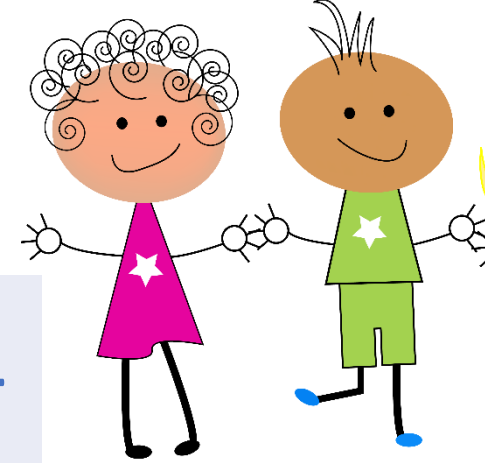
## SCHOOL HEALTH PHYSICIAN

- Provides medical oversight
- Collaborates with parents and health care providers to ensure student health needs are supported in the school setting
- Acts as consultant to Medical Services Review Team (MSRT) in providing recommendations for one-on-one skilled nursing care

## SCHOOL STAFF

- Support federal, state and local mandates
- Collaborate with the PHN and SHA to support the student with a health condition
- Participate in education and training provided by the PHN
- Promote health and wellness in the school community

# School Health Program At a Glance



<b>Number of Schools (Fairfax and Falls Church City):</b>	<b>201</b>
<b>Student Enrollment:</b>	<b>190,152</b>
<b>Students with Health Plans:</b>	<b>81,376</b>
<b>Number of Student Visits to School Health Rooms:</b>	<b>780,534</b>
<b>Number of EMS Calls:</b>	<b>1,287</b>
<b>Number of EMS Transports:</b>	<b>705</b>
<b>Number of Medically Fragile Students:</b>	<b>55</b>

# School Health Program Budget and Staffing FY 2019

## FY 2019 Funded Merit Positions

School Health Physician	1
Public Health Nurse IV & III	13
Public Health Nurse II	65
Senior School Health Aide	4
School Health Aides	195
Administrative Assistants	2
Total Positions	280

## FY 2019 Revised Budget

Expenditures	\$17.0 million
State Revenue	\$4.0 million
The County and FCPS split the revenue (\$2.0 million to the County and \$2.0 million to FCPS)	

## Nurse to Student Ratio

FY 2019	1:2,925
---------	---------

# Addressing School Health Program Needs - FYs 2017 and 2018

<b>FY 2017</b>	<b>FY 2018</b>
<ul style="list-style-type: none"><li>• Filled two existing vacant Public Health Nurse II positions utilizing existing balances within Personnel Services*</li><li>• Funding of \$0.35 million was added to address the increase in the number of Medically Fragile students</li></ul>	<ul style="list-style-type: none"><li>• Filled two more existing vacant Public Health Nurse II positions utilizing existing balances within Personnel Services*</li></ul>

\* Positions had been held vacant due to previous budget reductions

# Addressing School Health Program Needs - Current

<b>FY 2019</b>	<b>FY 2020 Advertised Budget</b>
<ul style="list-style-type: none"><li>• Filled two more existing vacant Public Health Nurse II positions utilizing existing balances within Personnel Services*</li><li>• Funding of \$0.13 million was added to address the increase in the number of Medically Fragile students</li><li>• Establish Additional Substitute School Health Aide positions</li><li>• Establish Additional Resource Nurse positions to support coverage needs</li></ul>	<ul style="list-style-type: none"><li>• Includes funding of \$0.25 million to fill the last two existing vacant Public Health Nurse II positions</li><li>• Includes funding of \$0.27 million and 2/2.0 FTE positions to address Federal Mandates in School Health Staff Development</li><li>• Includes funding of \$0.15 million to address School Health Aide Hours for Paid Holiday and Leave</li></ul>

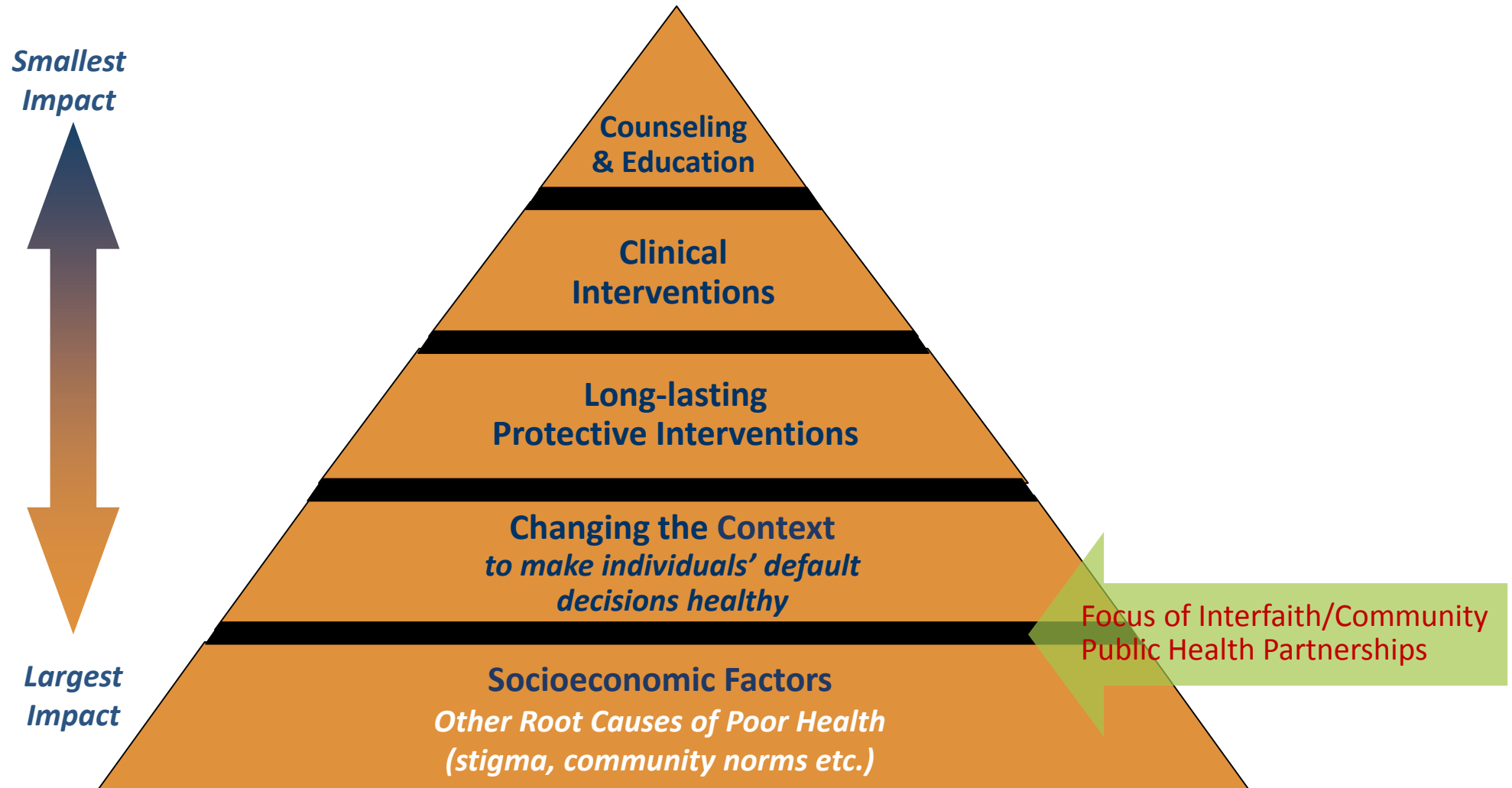
\* Positions had been held vacant due to previous budget reductions



# Addressing School Health Program Needs – The Future

FY 2021 Anticipated Request	FY 2022 – FY 2026
<ul style="list-style-type: none"><li>• Funding of \$0.9 million and 7/7.0 FTE positions to address the nurse to student ratio</li><li>• Funding of \$0.72 million for the anticipated increase in the number of Medically Fragile students</li></ul>	<ul style="list-style-type: none"><li>• The Health Department has proposed a multi-year plan to bring the nurse to student ratio to the goal of 1:2,000</li><li>• If 7/7.0 FTE positions are added each fiscal year then by FY 2026 the nurse to student ratio will be 1:2,031</li></ul>

# The Health Impact Pyramid



# Sustainable Solutions to Health and Wellness

## Goals & Objectives:



Give a man a fish,  
he'll eat for a day.  
Teach a man to fish,  
he'll eat for life.

Lao Tzu

**TAKING  
CHARGE**  
OF YOUR **HEALTH** &  
**WELLBEING**



## Areas of Opportunity:

- Mental Health Stigma and Suicide Prevention
- Chronic Disease Self-Management
- Emergency Preparedness
- Health and Wellness
- Community Gardens

# Interfaith Public Health Partners

- ADAMS Center
- Bethlehem Baptist
- Dar Al Hijrah
- Durga Temple
- Emmanuel Worship Center
- Grace Christian Church
- Santa Maria Episcopal
- St. Mark's Lutheran
- Rajdhani Mandir
- Harvest Chinese Christian Church
- Chinese American Health Services

