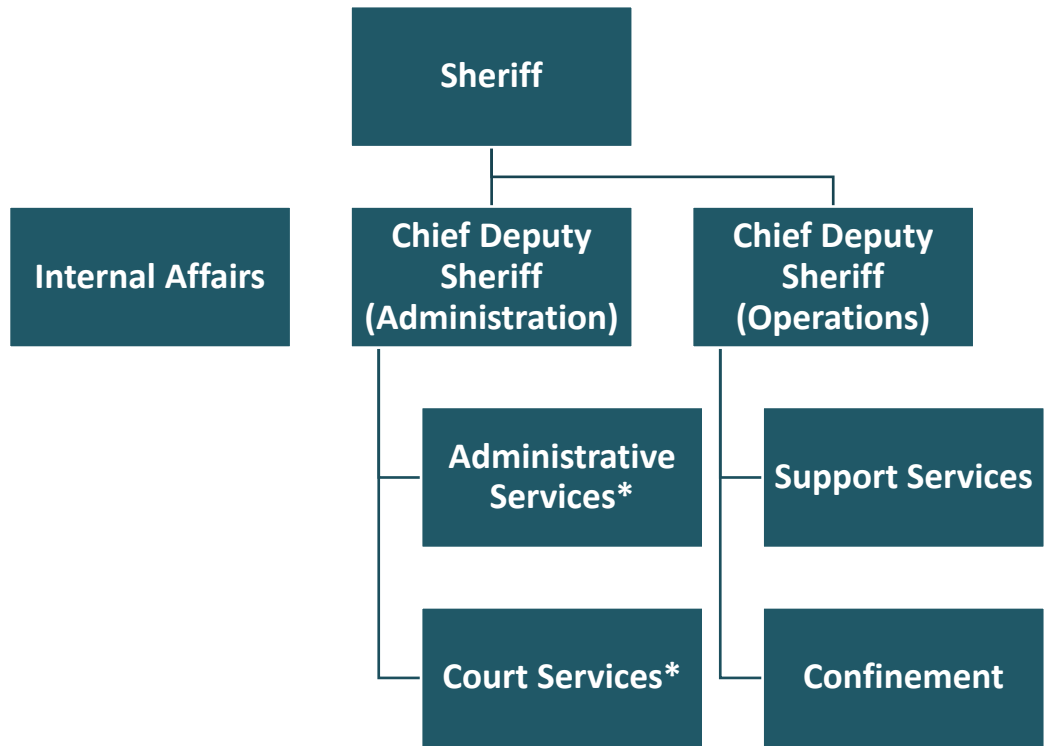


Office of the Sheriff

Organizational Chart



*Judicial Administration Program Area of the Office of the Sheriff

Information on the entire Office of the Sheriff, including the Judicial Administration Program Area, can be found in the Public Safety section of Volume 1.

Budget and Staff Resources

Judicial Administration Program Area Summary

Category	FY 2019 Actual	FY 2020 Adopted	FY 2020 Revised	FY 2021 Advertised	FY 2021 Adopted
FUNDING					
Expenditures:					
Personnel Services	\$16,589,545	\$16,601,880	\$16,601,880	\$17,247,177	\$16,601,880
Operating Expenses	4,753,879	4,031,229	5,352,860	4,031,229	4,031,229
Capital Equipment	44,189	0	0	0	0
Total Expenditures	\$21,387,613	\$20,633,109	\$21,954,740	\$21,278,406	\$20,633,109
Total Income	\$4,830,175	\$4,857,775	\$4,853,979	\$4,867,549	\$4,867,549
NET COST TO THE COUNTY	\$16,557,438	\$15,775,334	\$17,100,761	\$16,410,857	\$15,765,560
AUTHORIZED POSITIONS/FULL-TIME EQUIVALENT (FTE)					
Regular	161 / 160.5	161 / 160.5	159 / 158.5	160 / 159.5	159 / 158.5
Exempt	3 / 3	3 / 3	4 / 4	4 / 4	4 / 4
State	27 / 27	27 / 27	27 / 27	27 / 27	27 / 27