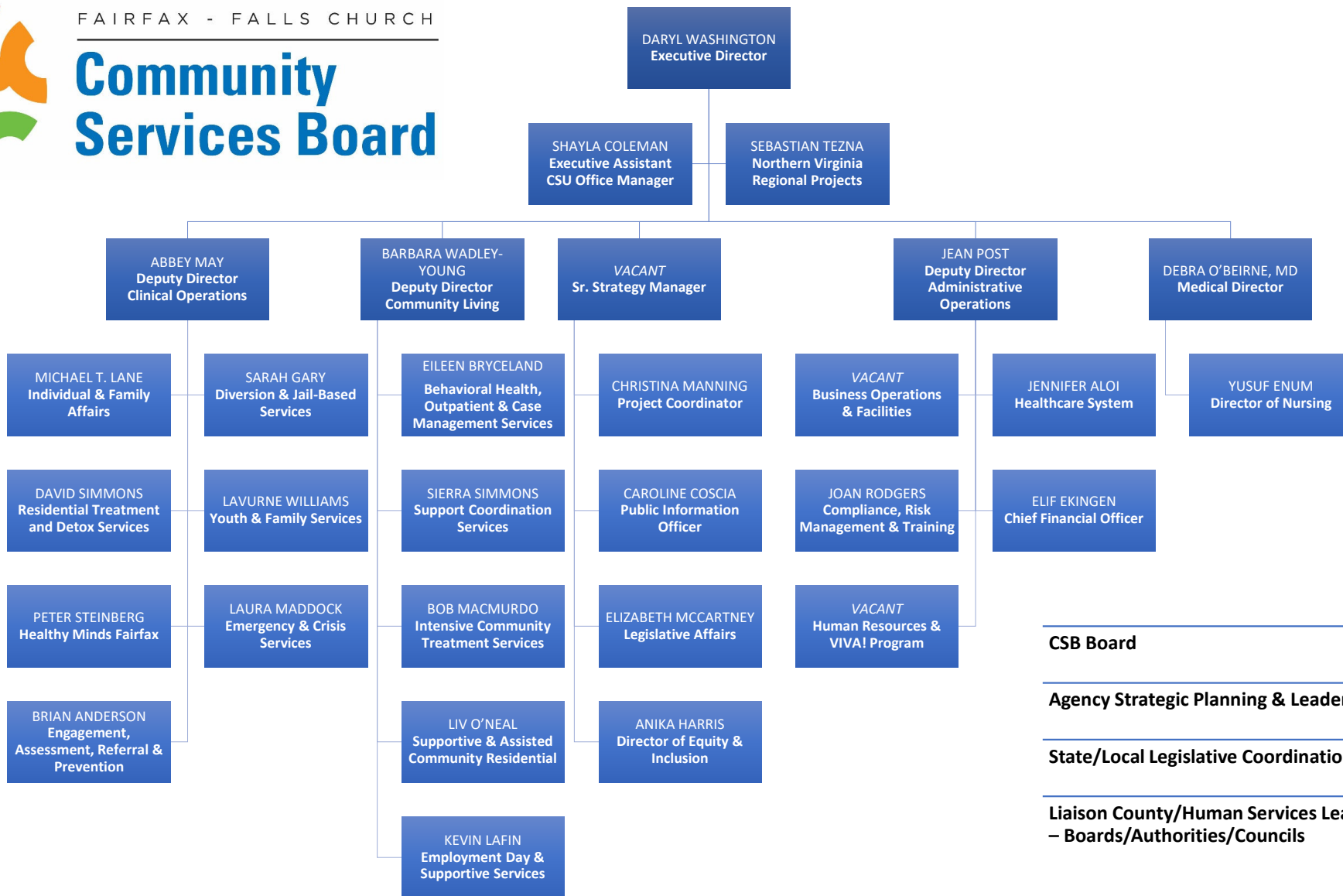




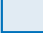


Community Services Board



- **CSB Board**
- **Agency Strategic Planning & Leadership**
- **State/Local Legislative Coordination**
- **Liaison County/Human Services Leadership
– Boards/Authorities/Councils**

Deputy Director of Clinical Operations

-  CROSS-CUTTING SERVICES
-  EPISODIC TREATMENT
-  COMMUNITY LIVING

ENGAGEMENT ASSESSMENT & REFERRAL

- Call Center
- Walk-in Engagement Services
- Assessment Unit
- System Navigation

EMERGENCY & CRISIS SERVICES

- Emergency
- Mobile Crisis Unit
- Crisis Care Program
- Civil Commitment Program

WELLNESS, HEALTH PROMOTION & PREVENTION SERVICES & NURSING

- Community wide prevention and promotional efforts, such as Mental Health First Aid skills building and awareness
- Promotes and implements community capacity building activities
- Initiates & maintains ongoing collaboration with human services agencies, schools and community coalitions
- Fosters and supports evidence-based practices, programs, and services

CONSUMER & FAMILY AFFAIRS

DIVERSION & JAIL-BASED SERVICES

RESIDENTIAL TREATMENT & DETOX SERVICES



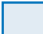
- Corner Stones
- Crossroads
- A New Beginning
- Steps to Recovery
- Contracted Services (SUD)
- General Case Management
- New Generations
- Residential Admissions Unit
- Fairfax Detoxification Center
- Detox Diversion

YOUTH & FAMILY

- Behavioral Health Outpatient & Case Management Services
- Juvenile Forensic Services
- Care Coordination
- Hospital & Residential Discharge Planning

MEDICAL SERVICES

DEPUTY DIRECTOR OF COMMUNITY LIVING TREATMENT & SUPPORT SERVICES

-  CROSS-CUTTING SERVICES
-  EPISODIC TREATMENT
-  COMMUNITY LIVING

BEHAVIORAL HEALTH OUTPATIENT & CASE MANAGEMENT SERVICES

- Case Management for persons with Serious Mental Illness (SMI)
- Adult Outpatient Treatment (Mental Health & Substance Use Disorder)
- Related Medication Clinics
- Intensive Services Unit
- First Episode (Turning Point & CHR-P)

SUPPORT COORDINATION

- Eligibility Screening & Intake for Developmental Disability Waivers (DDW)
- Support Coordination for persons with DDW
- Case Management for persons on the DDW waitlist
- Youth in transition from school

INTENSIVE COMMUNITY TREATMENT SERVICES

- Intensive Case Management
- Program for Assertive Community Treatment (PACT)
- State Hospital and Forensic Discharge Planning
- Mandatory Outpatient (MOT) & NGRI (Not Guilty by Reason of Insanity)
- Project for Assistance in Transition from Homelessness (PATH) & Hypothermia

ASSISTED COMMUNITY RESIDENTIAL SERVICES

- A continuation of residential support for adults with developmental disabilities
- DD Group Homes & Apartments

SUPPORTIVE COMMUNITY RESIDENTIAL SERVICES

- A continuum of residential supports for adults with SMI
- Group Homes & Apartments (e.g., RIC-Residential Intensive Care)
- Drop-In life-skill, medication & community supports

EMPLOYMENT, DAY & SUPPORTIVE SERVICES

- Contract Monitoring of BH & DD employment, day, residential, and supportive services
- Range of DD & Behavioral Health Employment & Day services
- Self-Directed Services
- Psychosocial rehabilitation
- Assisted Living Facility (ALF) for persons with mental illness

BSO

DEPUTY DIRECTOR OF ADMINISTRATIVE OPERATIONS

BUSINESS OPERATIONS & FACILITIES MANAGEMENT

- Oversight of CSB administrative support activities
- Financial assessment & screening for public assistance & healthcare programs
- Coordination of free medication to pharmaceutical assistance programs
- Business process management related to healthcare
- Maintenance of CSB medical records
- Oversees the Credentialing program to ensure staff licensing standards and revenue maximization
- Manages all aspects of CSB facilities
- Serves as the subject matter expert to architects, planners, and project managers on construction and rehabilitation projects impacting CSB services
- Integrates strategic goals into Capital Planning process
- Oversees CSB Emergency Management & COOP Operations
- Healthcare Contracts

FINANCIAL

- Programmatic and strategic financial support for CSB operations, as well as transactional support for daily operations
- Budget oversight, including creation and management of CSB annual budget
- Responsible for medical billing process
- Utilization management and revenue management cycle

HUMAN RESOURCES

- HR Operations & Payroll
- Employee Relations
- Staffing
- Workforce Planning
- Inters & Volunteers

HEALTHCARE SYSTEMS

- Electronic Health Record (EHR-Credible)
- Telecommunications & Asset Management (Phones, Desktops/Laptops, Tablets)
- Local HER Help Desk Operations
- Telehealth Support
- County DIT Liaison
- Manages and coordinates the Community Services Performance Contract
- Manages agency data and performance management activities
- Coordinates data quality improvement strategies

COMPLIANCE, QUALITY IMPROVEMENT AND TALENT DEVELOPMENT

- Manages the CSB's Corporate Compliance Program focusing on State/Federal healthcare regulatory requirements, best practices, and internal/external audits
- Integrates Medicaid, Medicare and other third-party payer requirements into clinical and administrative operations
- Upholds Quality Assurance program for program licensing, human rights, risk management, adverse incident analysis, and improvements to ensure safety
- CSB-Wide talent development program management and consultation
- Behavioral health training and development coordination and support
- Regulatory compliance training coordination, support, and tracking
- CSB Employee U support and administration
- Talent development and training