



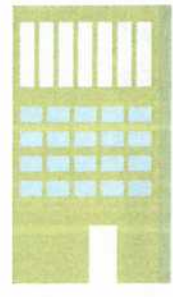
# Region 4

## At-A-Glance

(Human Services)

### HOUSING

#### Housing Units by Type



<b>51.5%</b> Single Family Detached	<b>32.2%</b> Single Family Attached
<b>15.1%</b> Multifamily Low-Rise	<b>0.5%</b> Multifamily Mid-Rise
<b>0%</b> Multifamily High-Rise	<b>0.6%</b> Mobile Home

#### Cost Burdened



<b>21.6%</b> Homeowners**
<b>40.5%</b> Renters**

\*\* Percentage of household income spent for mortgage costs or gross rent. According to HUD programs, households spending more than 30% of income for these housing costs are considered to be "cost-burdened."

### EDUCATIONAL ATTAINMENT



HS Diploma (and equivalent)  
**13.7%**



Some College/ No Degree OR Associate's Degree  
**19.3%**



Bachelor's Degree  
**33.6%**



Advanced Degree  
**29.7%**

Population includes persons 25 years and older.

### POVERTY

#### All People



**4.6%**

#### All Families



**2.8%**

#### Vulnerable Populations

##### Under 18



**5.2%**

##### 65+



**4.3%**

### COORDINATED SERVICES PLANNING (CSP) TOP 3 CONTACT TOPICS FOR NEEDS



Emergency Needs/Food **981 (12.3%)** inquiries\*



Rent/Mortgage/Security Deposit **806 (10.1%)** inquiries\*



Utility Assistance **517 (6.5%)** inquiries\*

\*Number (and percentage) of inquiries for that contact topic in FY 2019.

### TRANSPORTATION



**4.5%** of the population in this region use public transportation to commute to work.



**2.3%** of the households in this region have no vehicle available.

### INCOME

#### Household Income



**12.4%**  
Less than \$50,000

**23.0%**  
\$50,000 - \$99,999

**23.3%**  
\$100,000 - \$149,999

**41.4%**  
\$150,000 or more

### HEALTHCARE



**6.6%** of the population in this region does not have health insurance.

### EMPLOYMENT



**3.1%** of persons in this region (age 16 and over) are unemployed.

### INDIVIDUALS WITH DISABILITIES



**6.6%** of the population in this region has one or more disabilities.



# Region 4

## At-A-Glance

(Human Services)

### POPULATION



**309,469**

An estimated 309,469 people live in this region.

### FOREIGN-BORN



**28.2%**

of the population (87,169 persons) living in this region are foreign-born.

### LANGUAGE

**13.1%** of the total population in this region (age 5 and over) speak English less than very well.



**34.2%** of the total population in this region (age 5 and over) speaks a language other than English at home.

Population includes native and foreign-born persons.

### RACE & ETHNICITY



**63.2%**  
White alone\*

**7.4%**  
Black alone\*

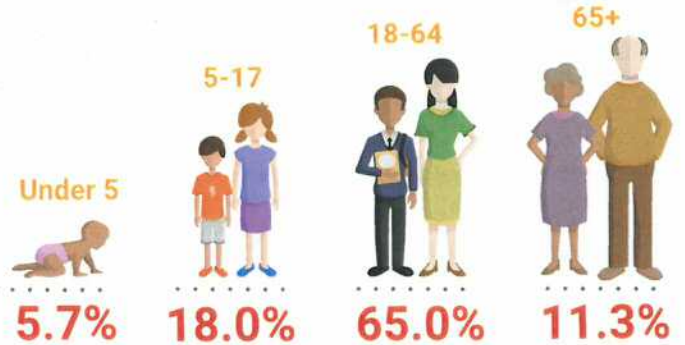
**22.4%**  
Asian alone\*

**6.9%**  
Other\*\*

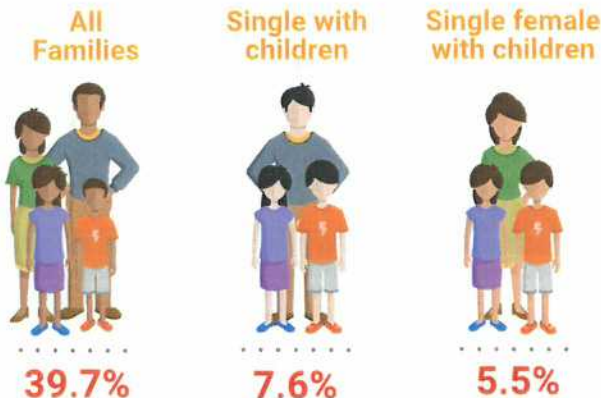
**12.1%**  
Hispanic

\*Population of those who identify with one race.  
\*\* Includes American Indian, Pacific Islander, Some Other Race Alone and Two or More Races.

### AGE



### FAMILY COMPOSITION



### HOUSES OF WORSHIP



Sources: U.S. Census Bureau, 2014-2018 American Community Survey, FY 2019 CSP Source Data, and Demographic Reports, 2019, County of Fairfax, VA. Data does not include the City of Fairfax. Prepared by Community Impact Unit, Fairfax County Department of Neighborhood and Community Services, January 2020.



To obtain this information in an alternative format, please call 703-324-4600, TTY 711.