



# Gum Springs

## Heritage Resources Study



Fairfax County Department of  
Planning & Development

Mount Vernon District Supervisor  
Dan Storck's Office  
*in partnership with*

The New Gum Springs Civic Association &  
The Gum Springs Historical Society and Museum

## About the Gum Springs Heritage Resources Study

Fairfax County is conducting a Heritage Resources Study for the Gum Springs Community, to recognize the history of Gum Springs and identify resources with historical, cultural, architectural, or archaeological significance within the area.

The Study will include research into historic documents and existing oral histories, an architectural survey, and new interviews with the community. The study results will be used to create a preservation management document with recommendations for future work.

## What are Heritage Resources?

Heritage resources are those sites or structures, including landscape settings, that exemplify the cultural, architectural, economic, social, political, prehistoric or historic heritage of the county or its communities.

### Questions?

Call Laura Kviklys: 703-324-6231 or email  
[Laura.Kviklys@fairfaxcounty.gov](mailto:Laura.Kviklys@fairfaxcounty.gov).

Language translation services are available. To request translated documents or an interpreter for a community meeting, email [Sarah.Godfrey@fairfaxcounty.gov](mailto:Sarah.Godfrey@fairfaxcounty.gov) or call 703-324-4256. Interpreter requests require notice at least one week before meetings.

Fairfax County is committed to nondiscrimination on the basis of disability in all county programs, services and activities. Reasonable accommodations will be provided upon request. For information, call (703) 324-1334, or TTY 711 (Virginia Relay Center).



Follow us on Facebook @  
Fairfax County Land Use  
Page

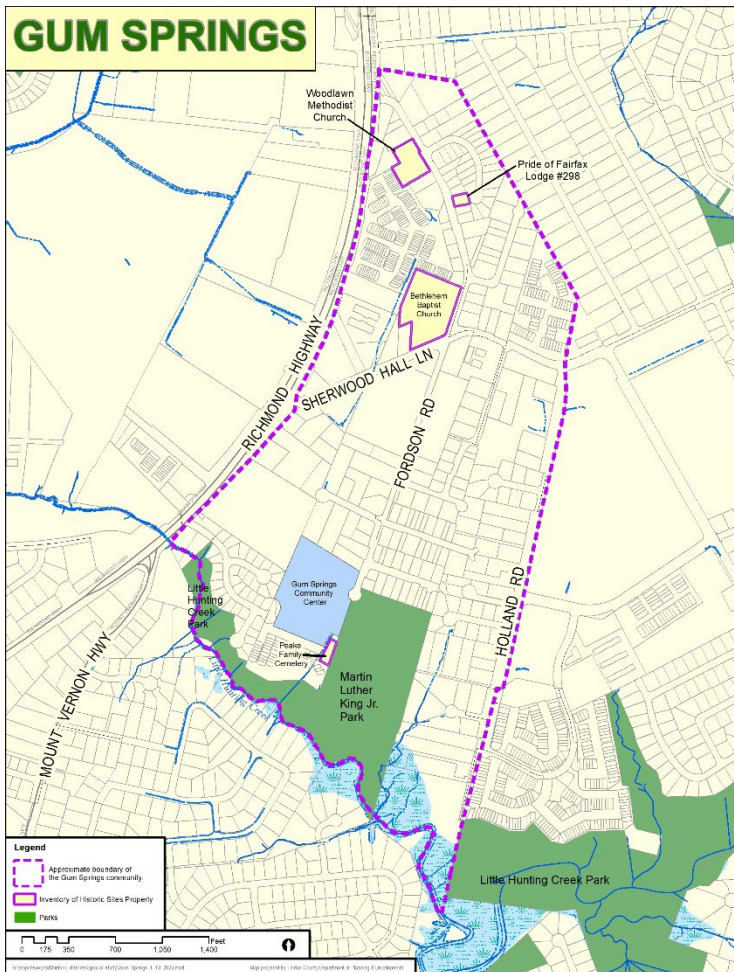
See reverse page for the  
Study Area Map, Project  
Deliverables and Timeline.





## Study Area

Staff worked with the community to draft the scope of work. The Study will focus on the Gum Springs area as outlined below. The Study area also includes three cemeteries which are outside the outlined area -- Bethlehem Baptist, Coleman/Snowden, and Woodlawn Methodist Church Cemeteries.



## Project Deliverables

### ➤ Reconnaissance Survey Documentation

- Recorded with the State Historic Preservation Office

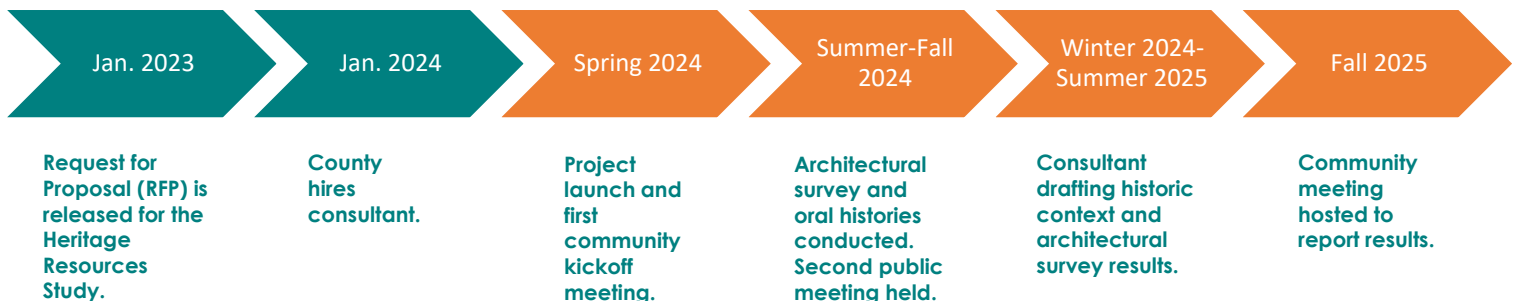
### ➤ Survey Report

- A written report to include historic context(s); photographs and descriptions of architectural resources identified during the survey; and a summary of the findings.
- Review of the survey findings with an analysis of Gum Springs eligibility for local, state, and national historic registers and potential boundaries.
- Identification and analysis of any individual resources which may potentially qualify individually for National Register of Historic Places listing.

### ➤ Management Document

- The management plan will analyze potential preservation planning tools and make recommendations for future preservation work including National Register District eligibility, Heritage Conservation Overlay District designation, Historic Overlay District designation, and other planning tools, as appropriate.

## Study Timeline\*



*\*This timeline is an estimation. Dates are subject to change.*