



County of Fairfax, Virginia

Lorton Visioning

Transportation Briefing

Presentation to the Lorton Visioning Task Force

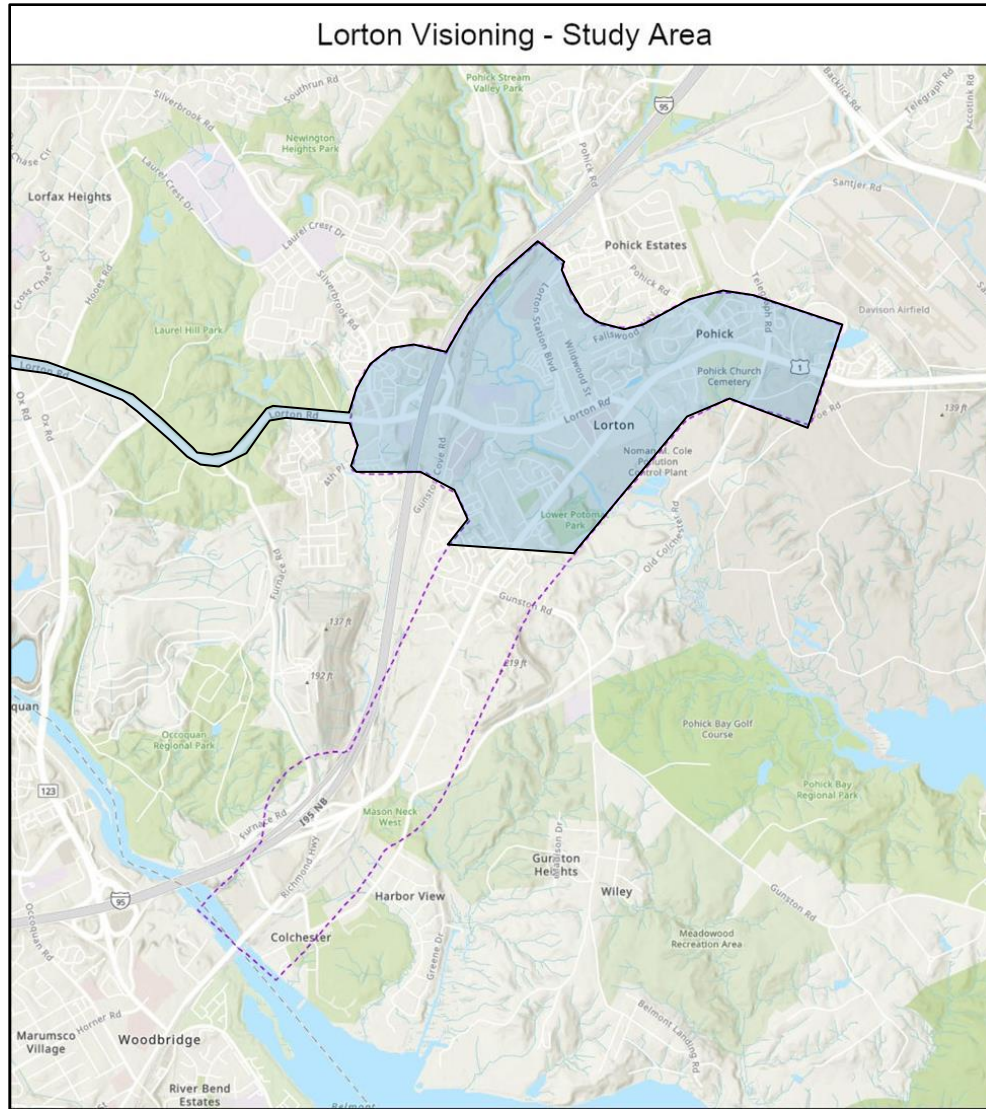
Thomas Burke

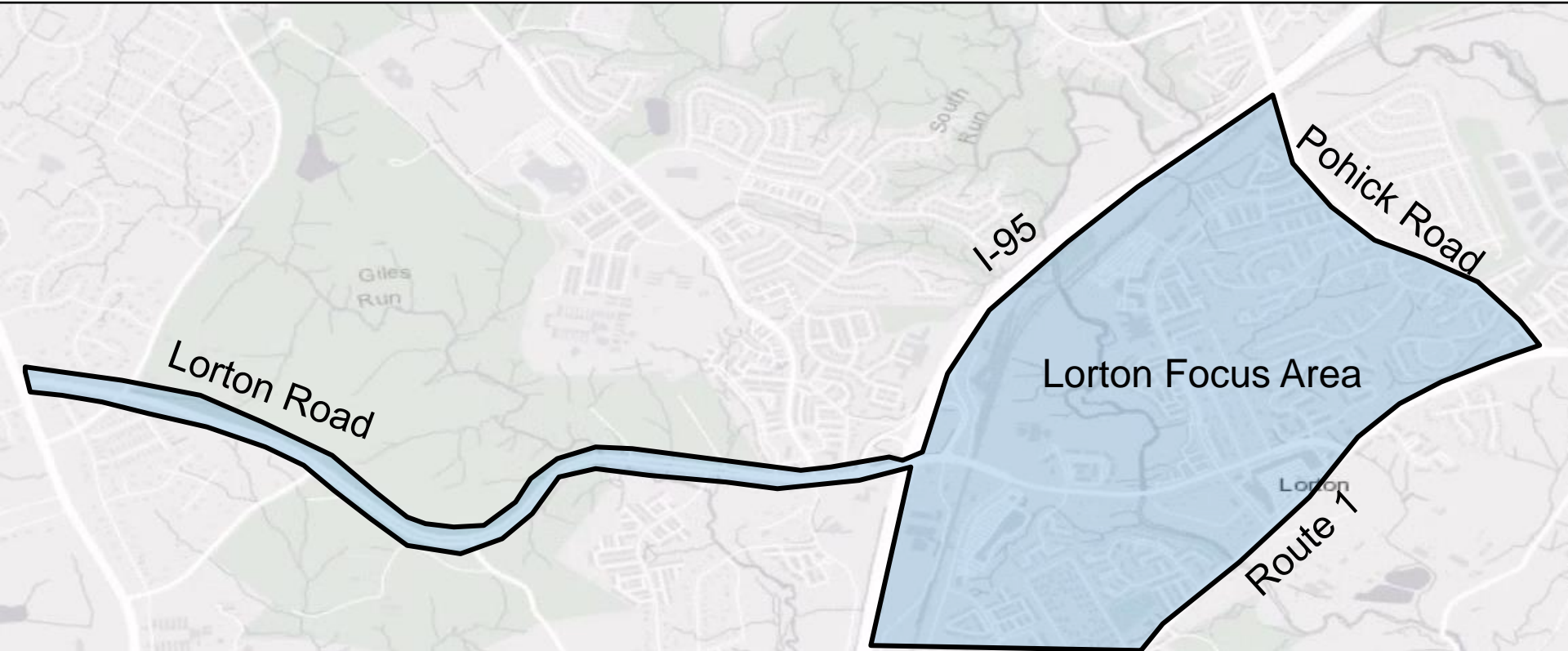
Fairfax County Department of Transportation

April 19, 2021



- Study & Focus Areas
- Existing Conditions
 - Traffic Counts
 - Bicycle & Trail Infrastructure and Comfort Levels
 - Pedestrian (Sidewalk) Infrastructure
 - Transit (Fairfax Connector)
- Comprehensive Plan Improvements
 - Transportation Plan Recommendations
 - Bicycle & Trails Recommendations
 - Transit (Fairfax Connector, Route 1 BRT)
 - *DRPT Study – BRT, Huntington Metro to Woodbridge VRE*
- Active Fairfax Efforts
- Alpine X Initiatives

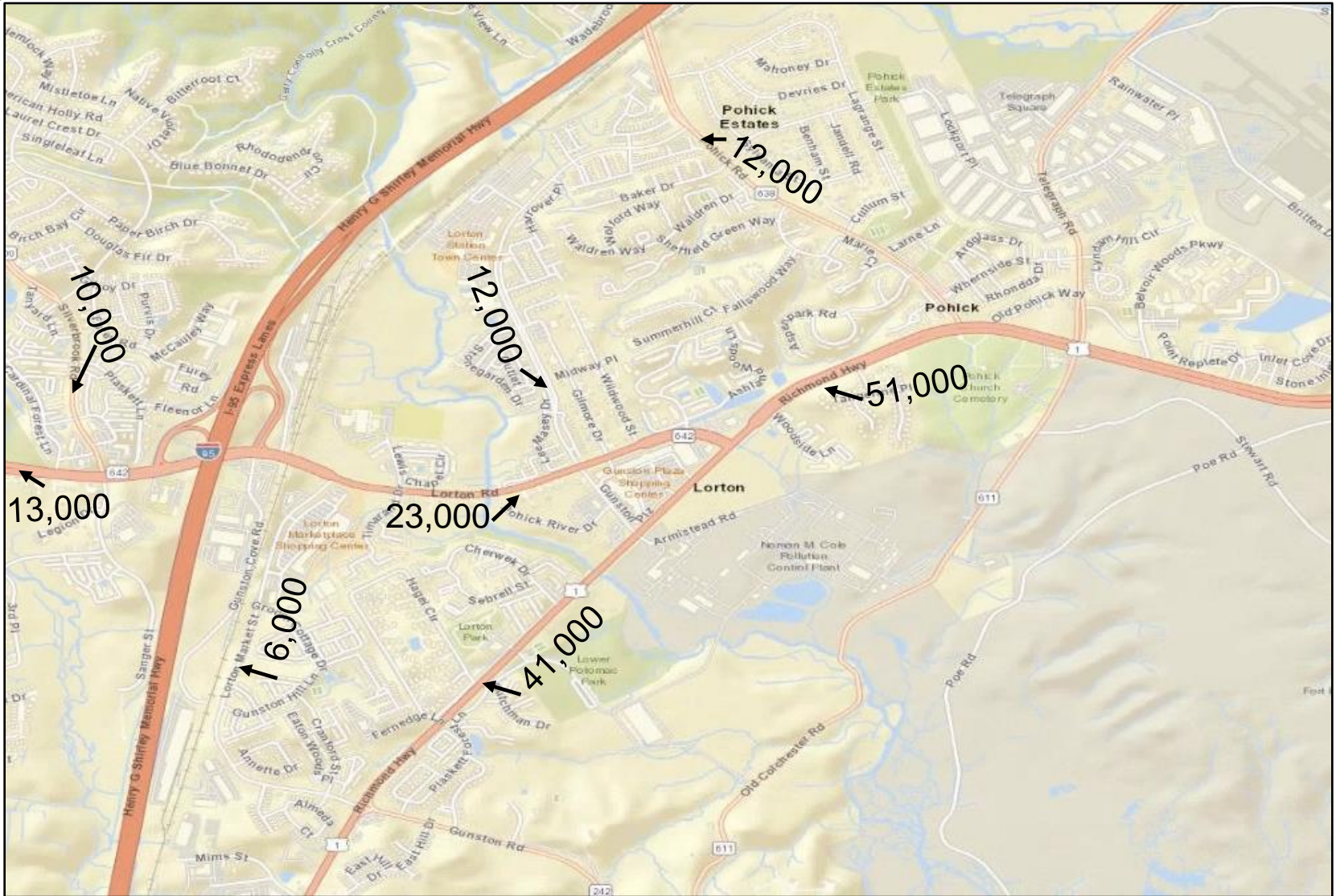


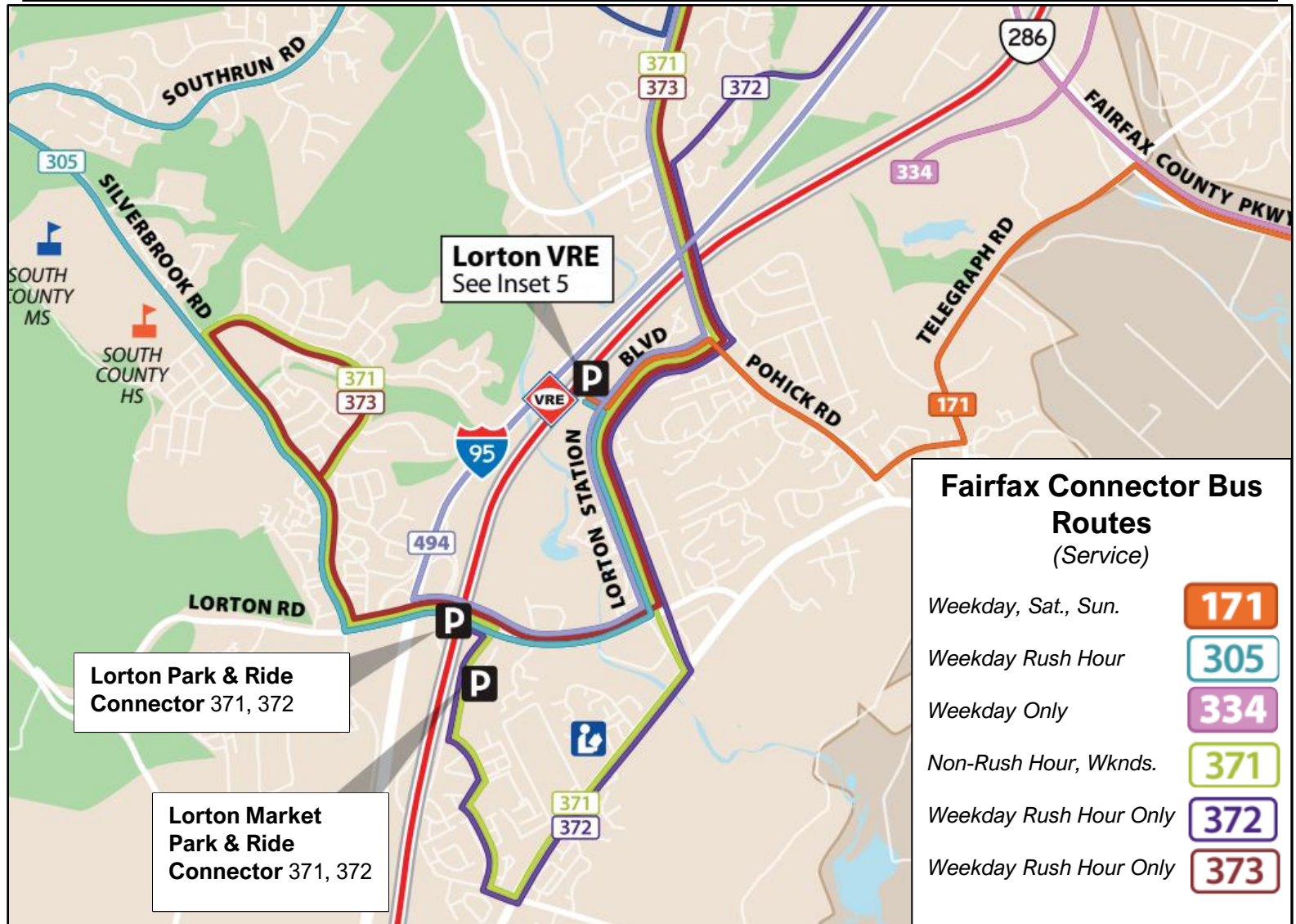


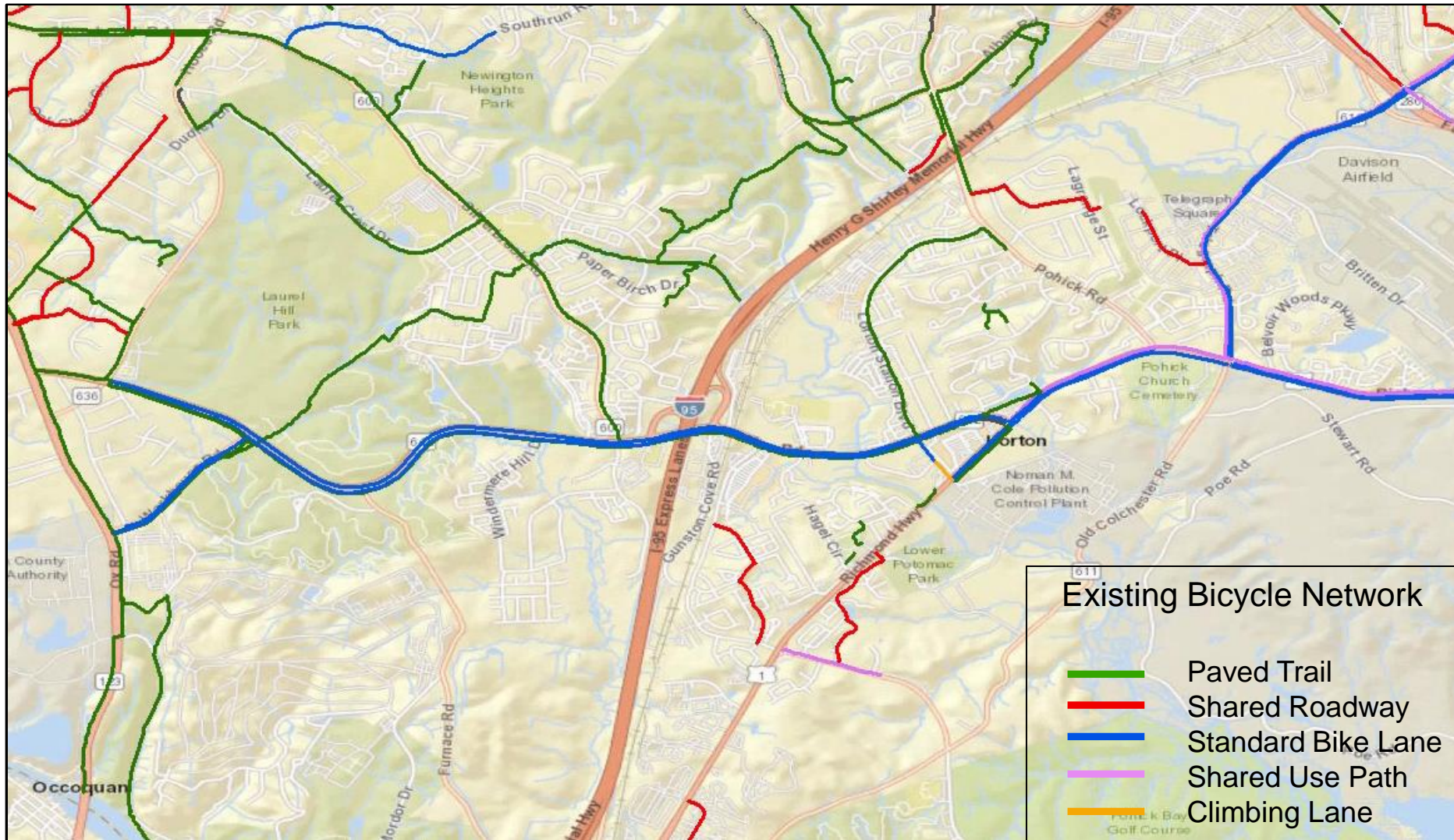


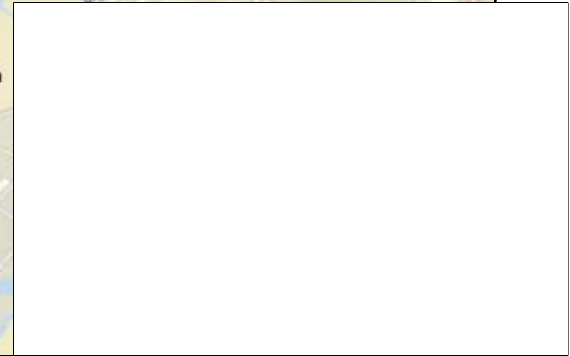
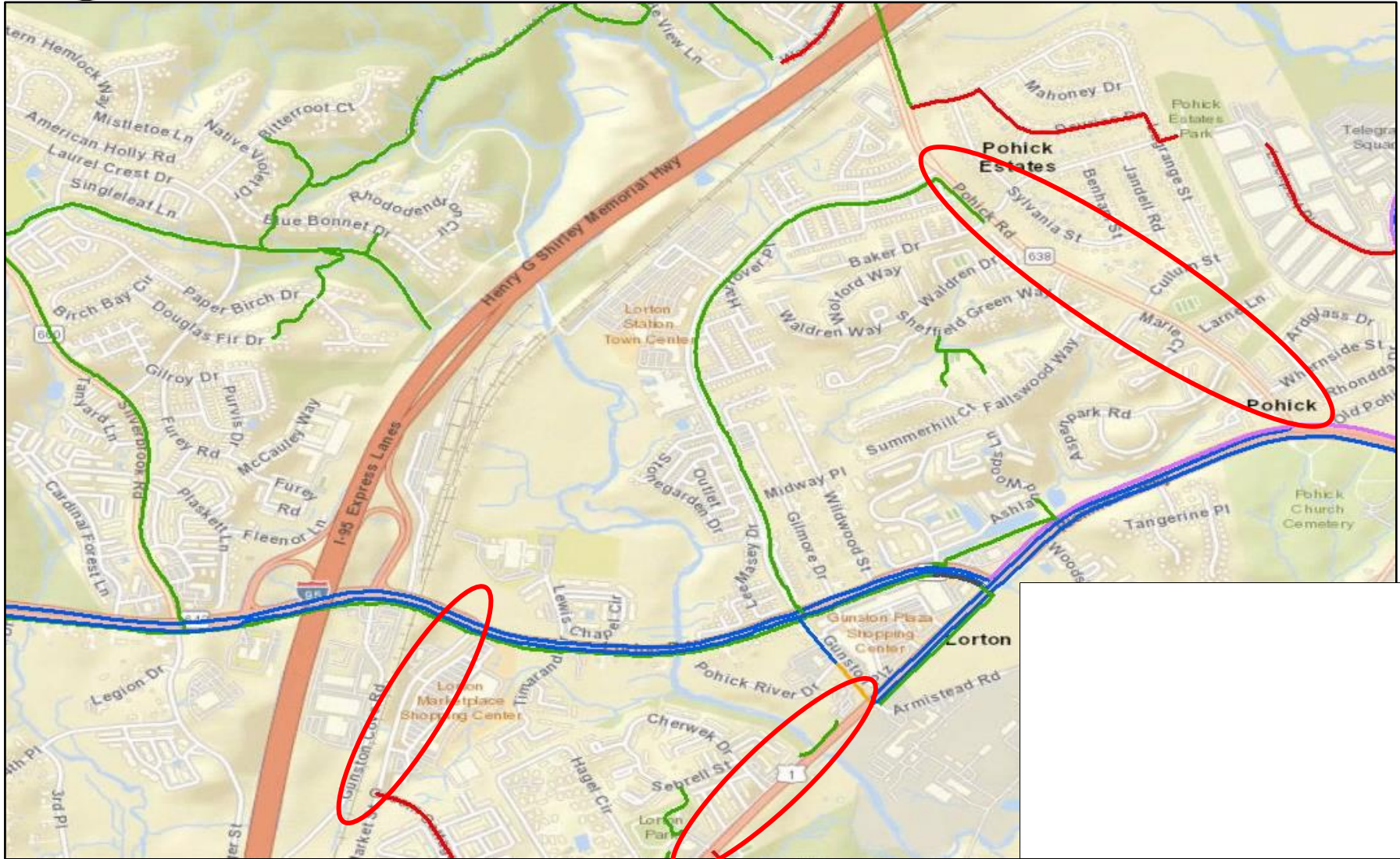
County of Fairfax, Virginia

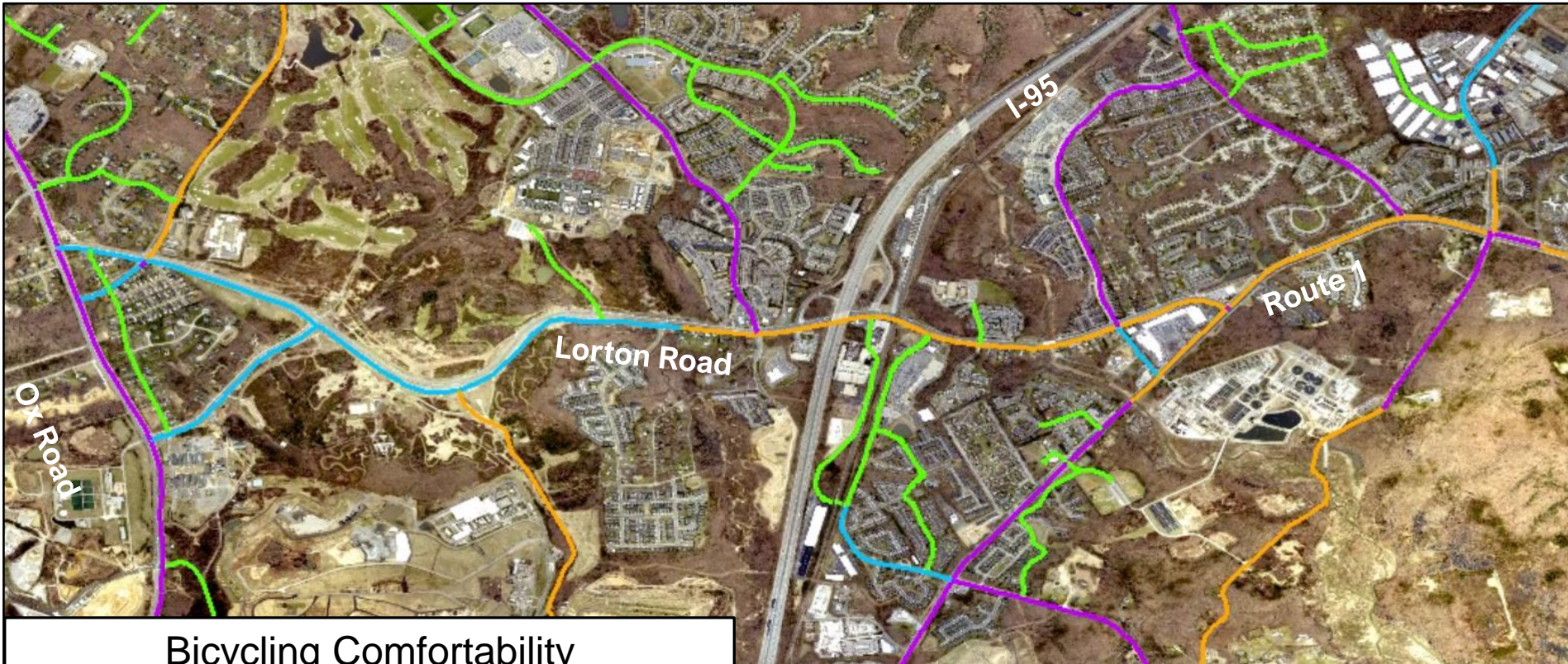
VDOT Average Annual Daily Trips (AADT)(2019)















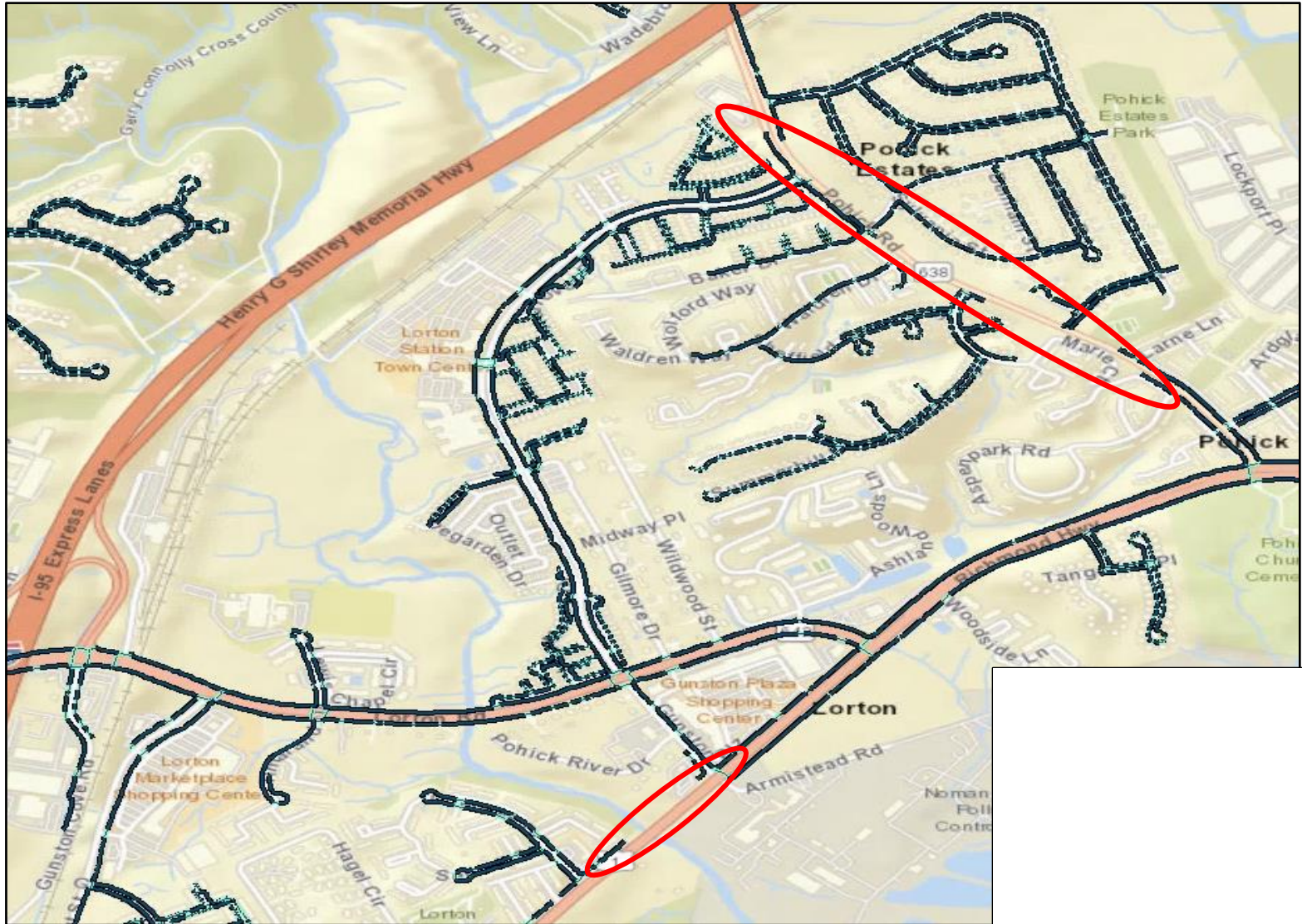
Bicycling Comfortability

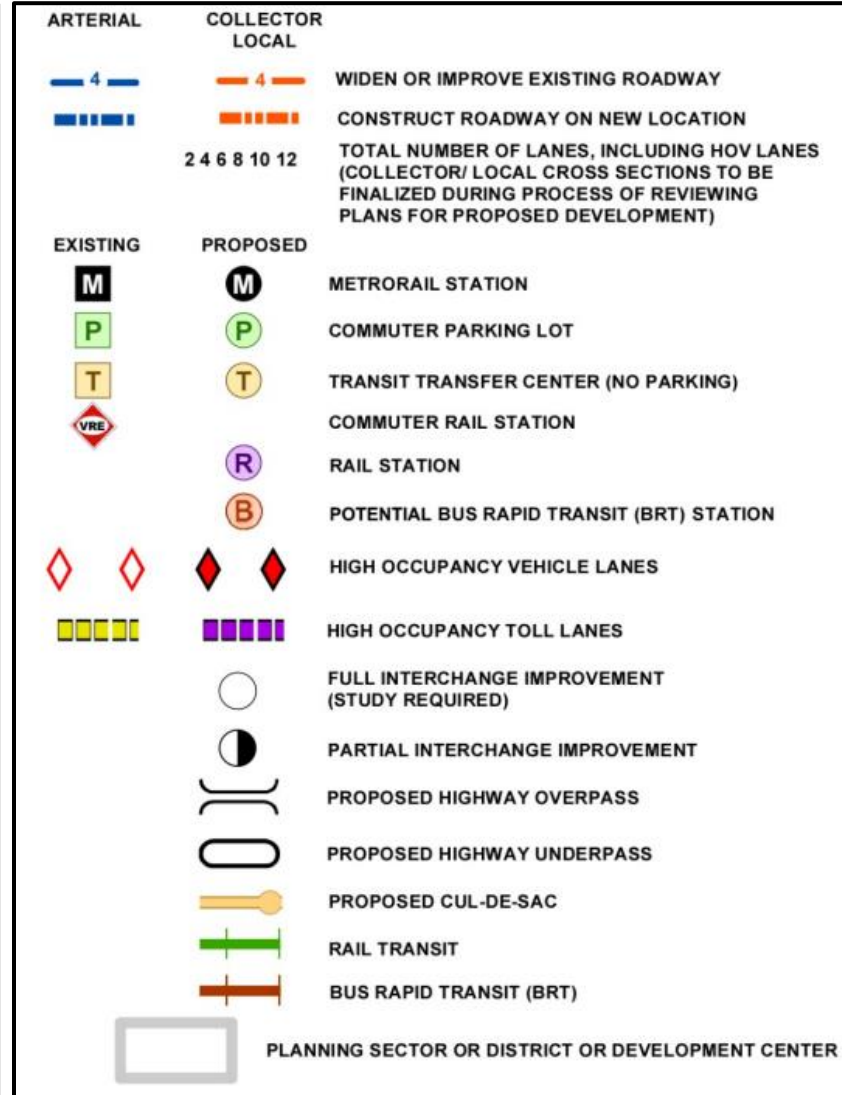
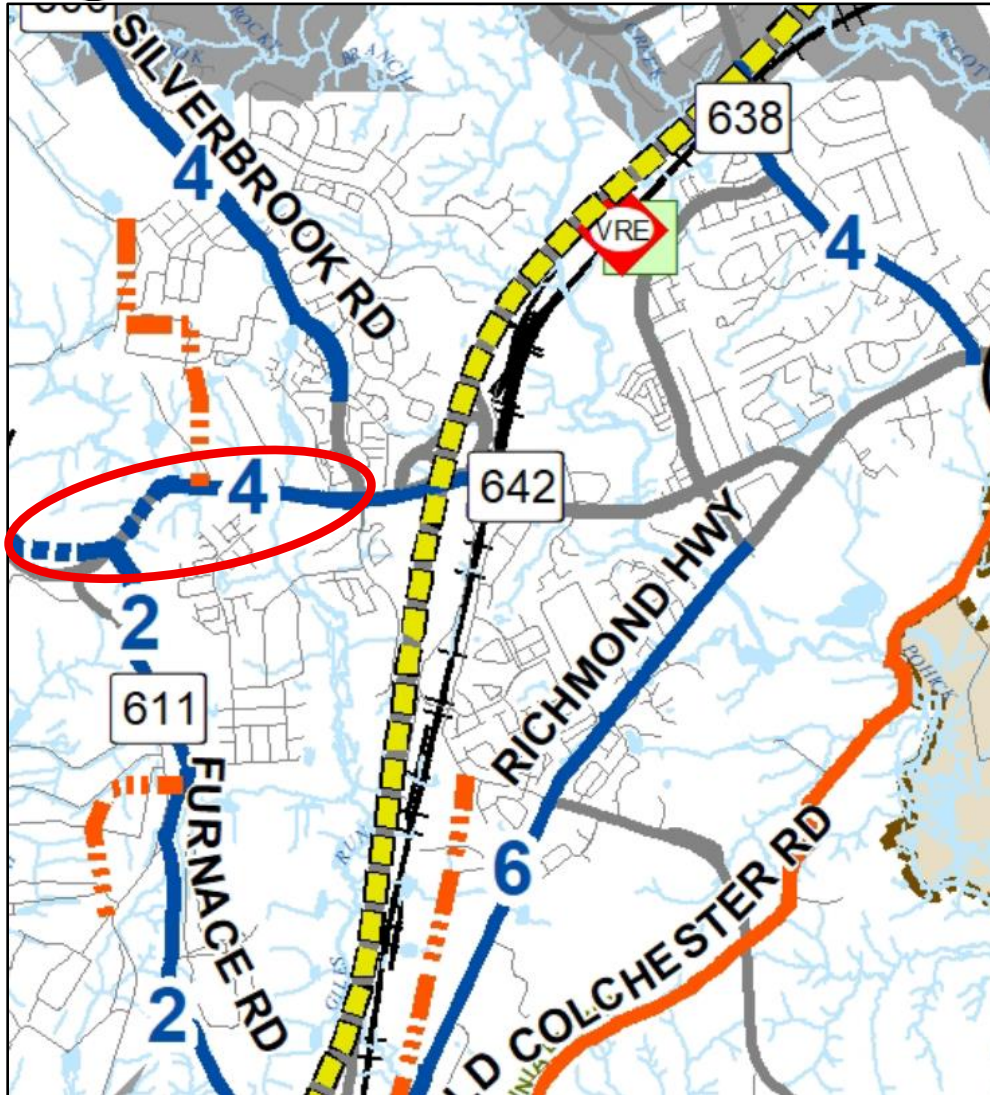
- | | | | |
|--|----------------------|---|------------------|
|  | Most Comfortable |  | Less Comfortable |
|  | Somewhat Comfortable |  | Use Caution |



Bicycle Network – Comfortability Lacking for the 8 to 80 Age Group



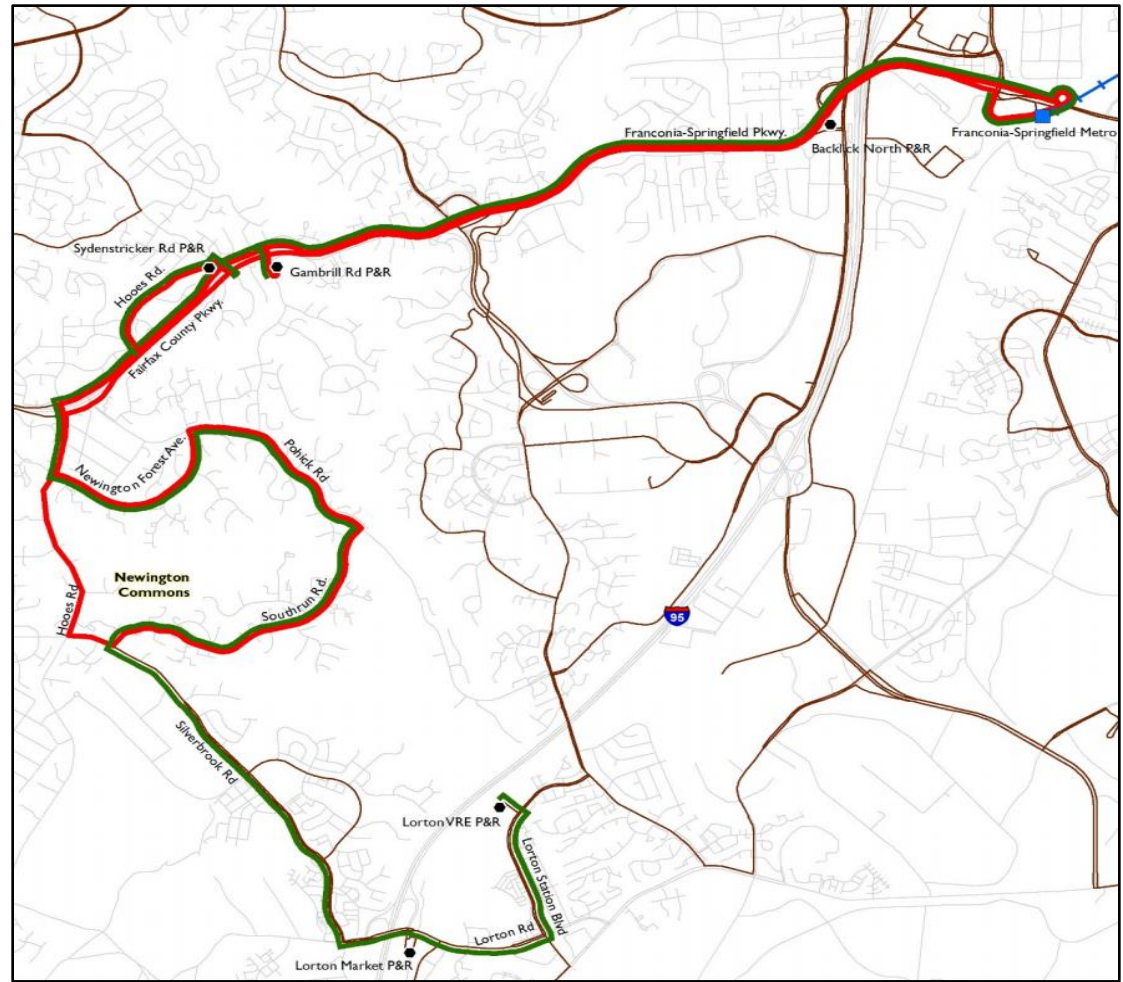




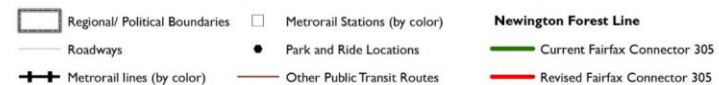


Fairfax Connector Bus Route 305

- Route operates on a peak-only schedule serving less than 200 daily passengers
- Recommended that the current route be replaced with the former Route 305 Newington Forest alignment but maintaining the 30-minute headway.
- Daily service along the southern portion of Silverbrook Road would continue to be provided by routes 371 and 373



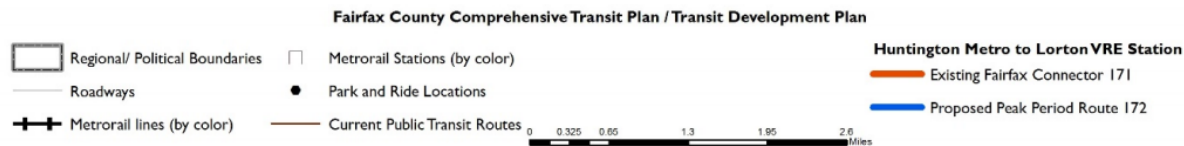
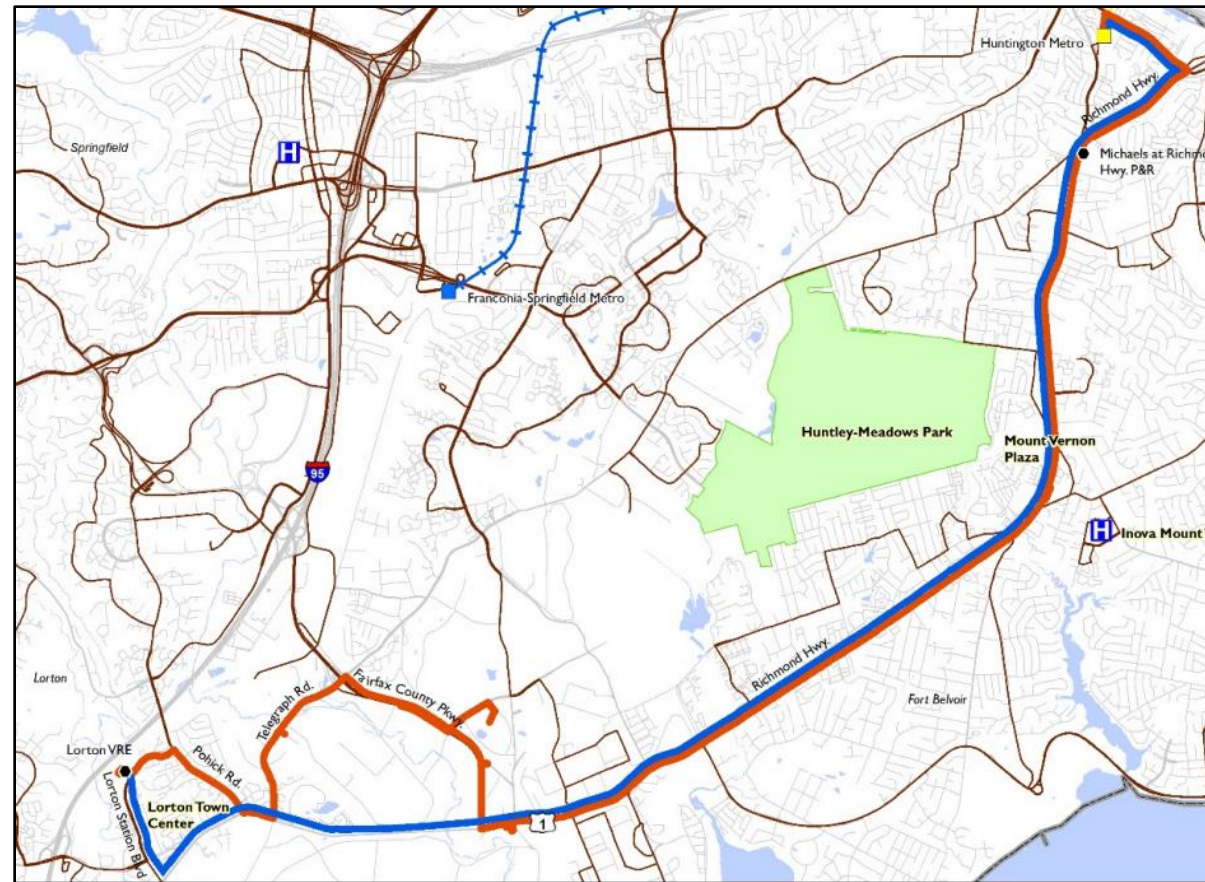
Fairfax County Comprehensive Transit Plan / Transit Development Plan





Fairfax Connector Bus Route – Proposed Route 171 and New Route 172

- Create a peak-period Route 172 that services the portion of Richmond Highway between Fairfax County Parkway and Armistead Road.
- 172 will provide direct service to the Inlet Cove Drive community and several other townhouse complexes located along this length of Richmond Highway





County of Fairfax, Virginia Route 1 Study – Huntington to Woodbridge

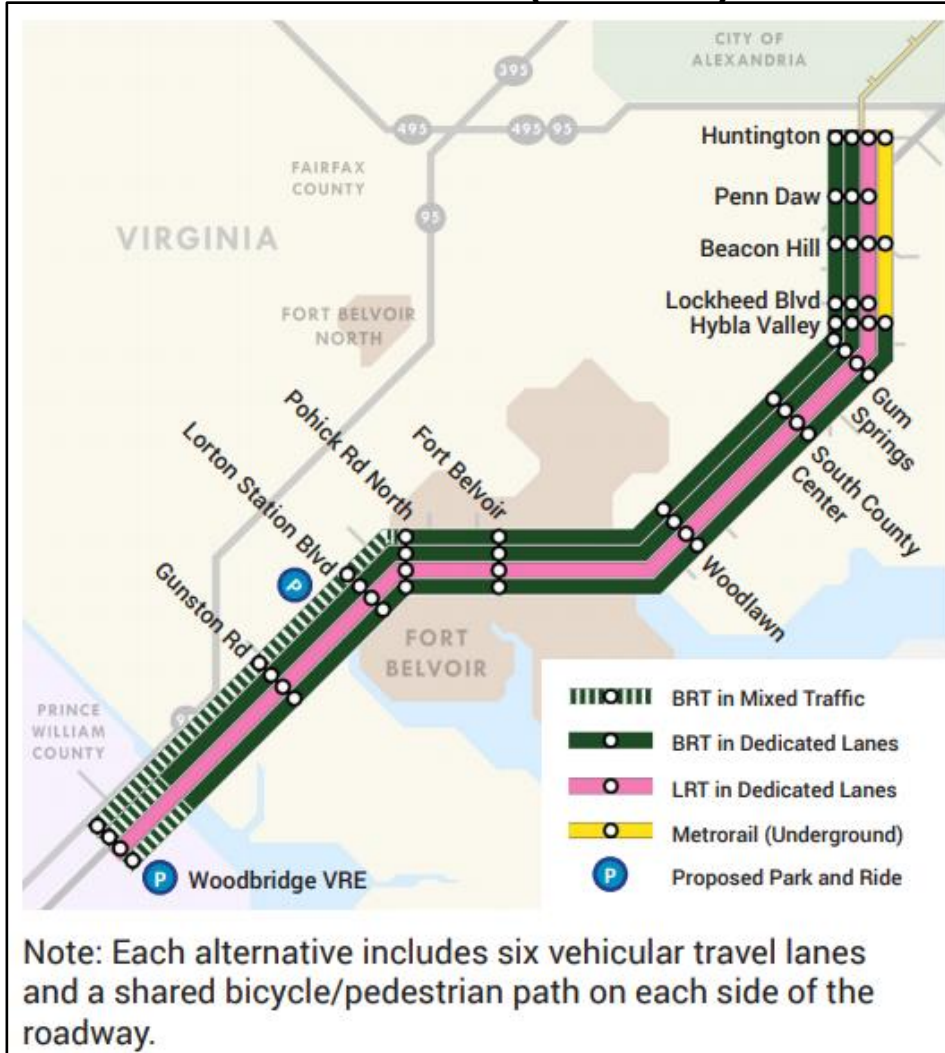
Multimodal Alternatives (Initial Alternatives) – 2015 Study





County of Fairfax, Virginia Route 1 Study – Huntington to Woodbridge

Multimodal Alternatives (Refined) – 2015 Study



Alternative 1
Bus Rapid Transit - Curb

Bus operates in curb, dedicated transit lanes from Huntington to Pohick Road North, and in mixed traffic south of Pohick Road to Woodbridge.

Alternative 2
Bus Rapid Transit - Median

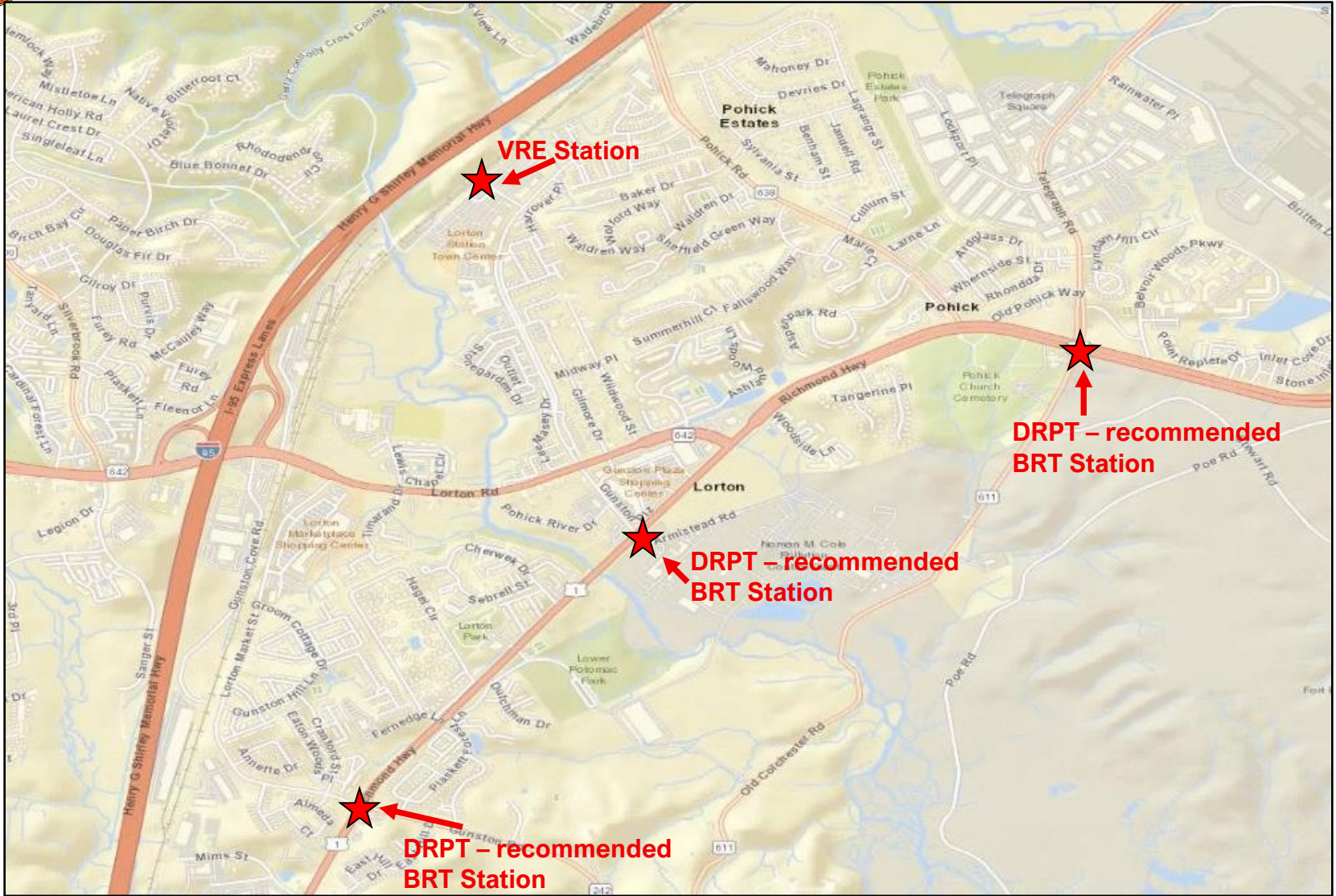
Bus operates in median in dedicated lanes for the entire length of the corridor and in mixed traffic in Prince William County.

Alternative 3
Light Rail Transit

Light rail operates in the median dedicated lanes for the entire length of the corridor.

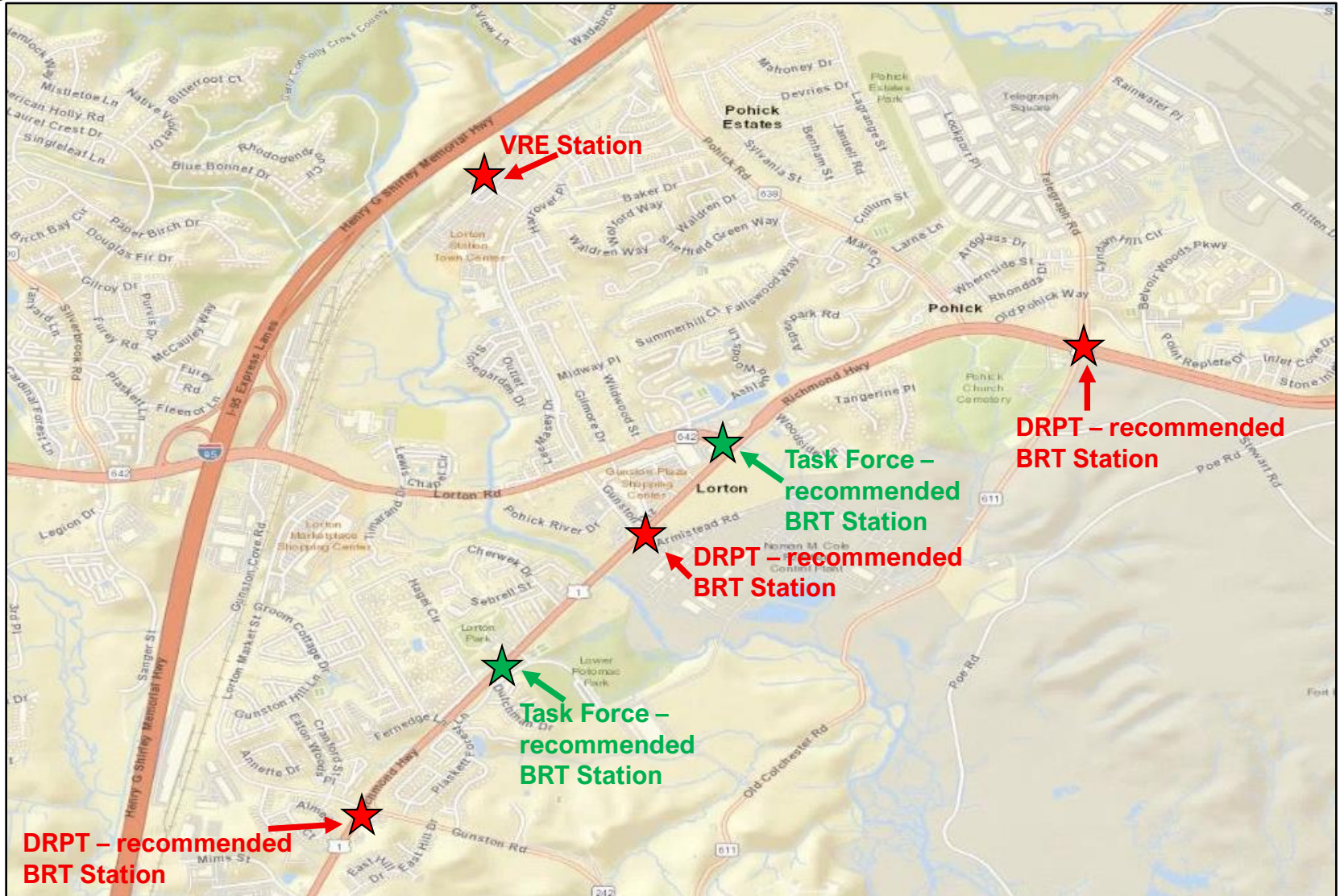
Alternative 4
Metrorail/BRT Hybrid

In the short term, BRT operates in dedicated lanes and transitions into mixed-traffic in Prince William County. In the long term, Metrorail is added underground from Huntington to Hybla Valley.





County of Fairfax, Virginia Task Force Recommended BRT Stops

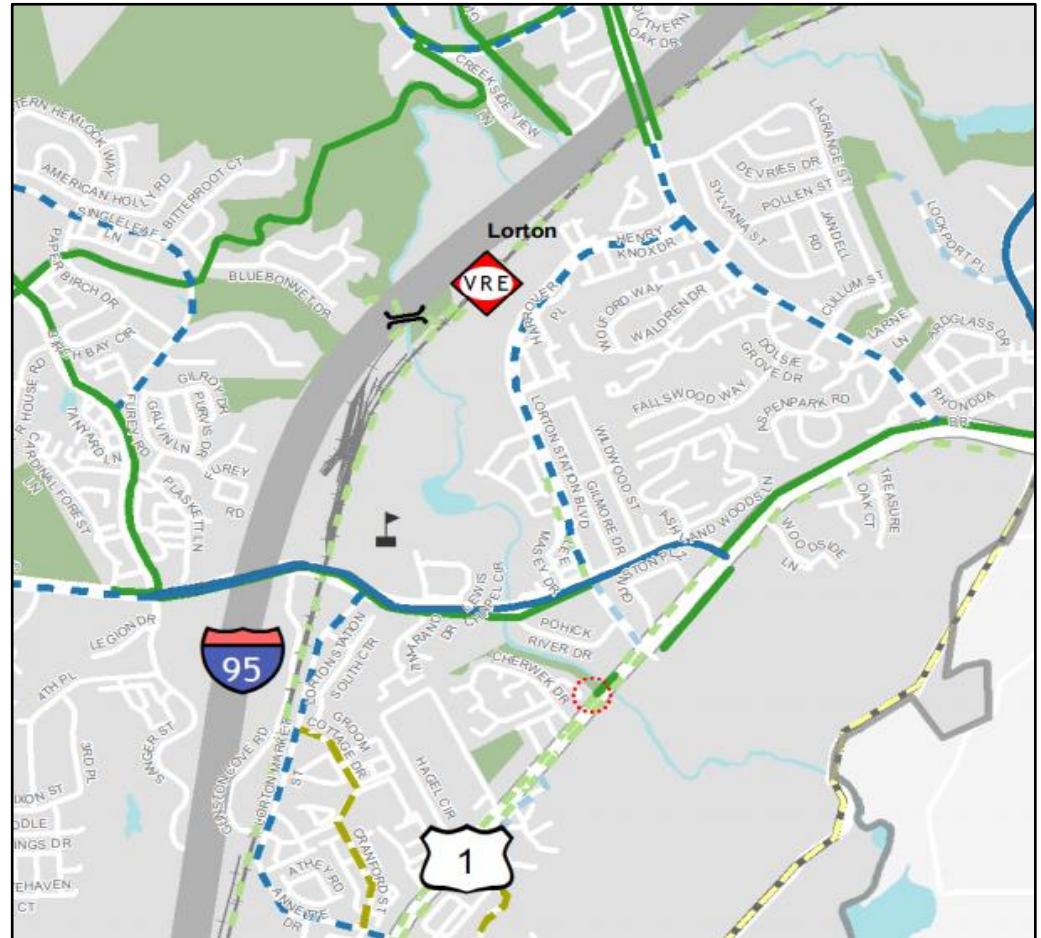




County of Fairfax, Virginia Fairfax County Bicycle Plan - 2018

Recommended Facilities

- Bike Lane
- Buffered Bike Lane
- Sharrow
- Climbing Lane
- Striped Shoulder
- Shared Roadway
- Shared Roadway w/ Safety Treatment
- Shared Use Path
- Cycletrack
- Bike Access Links
- Policy Roads
- Parks
- Road Crossing
- Stream Crossing
- Metro Station
- VRE Station
- Public Schools
- Railroads

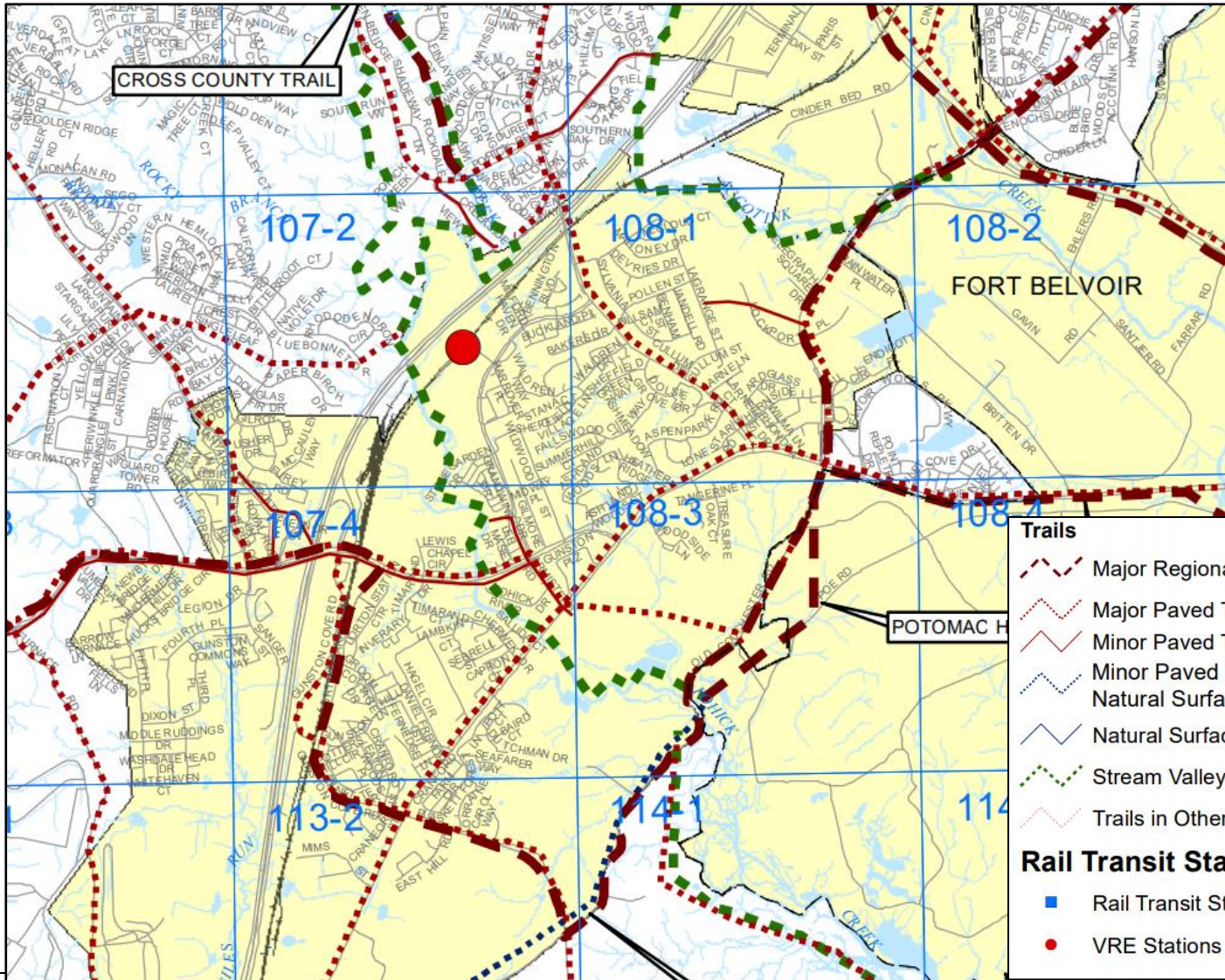


Existing Facilities

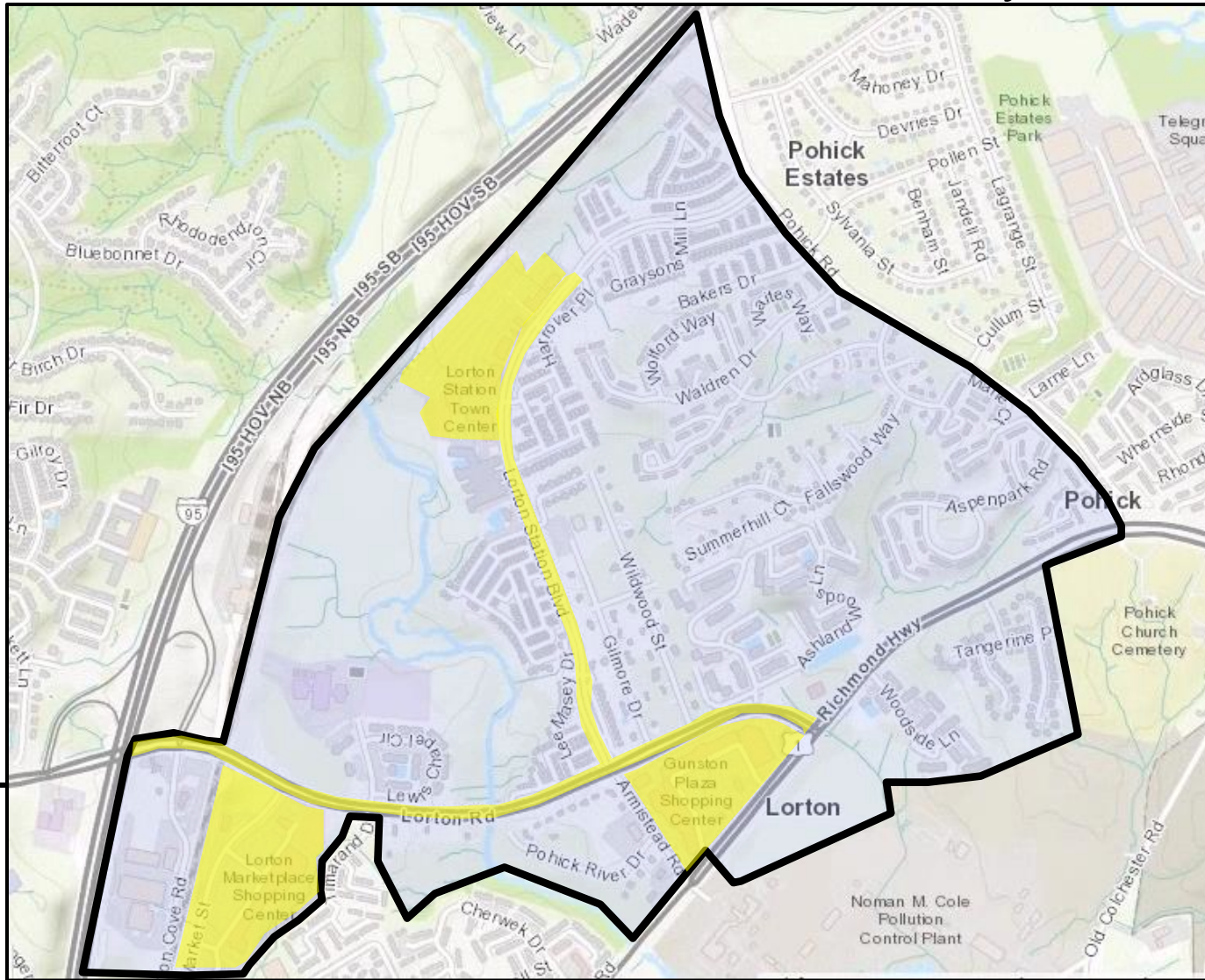
- Bike Lane
- Existing Off Street Trail



County of Fairfax, Virginia Fairfax County Trails Plan – July 2018



Map identifies County's planned trail system and does not show existing trails



To Telegraph Road

To Route 123





Lorton Road (East of I-95)



*Lorton Road
(East of Lorton Station Blvd.)*



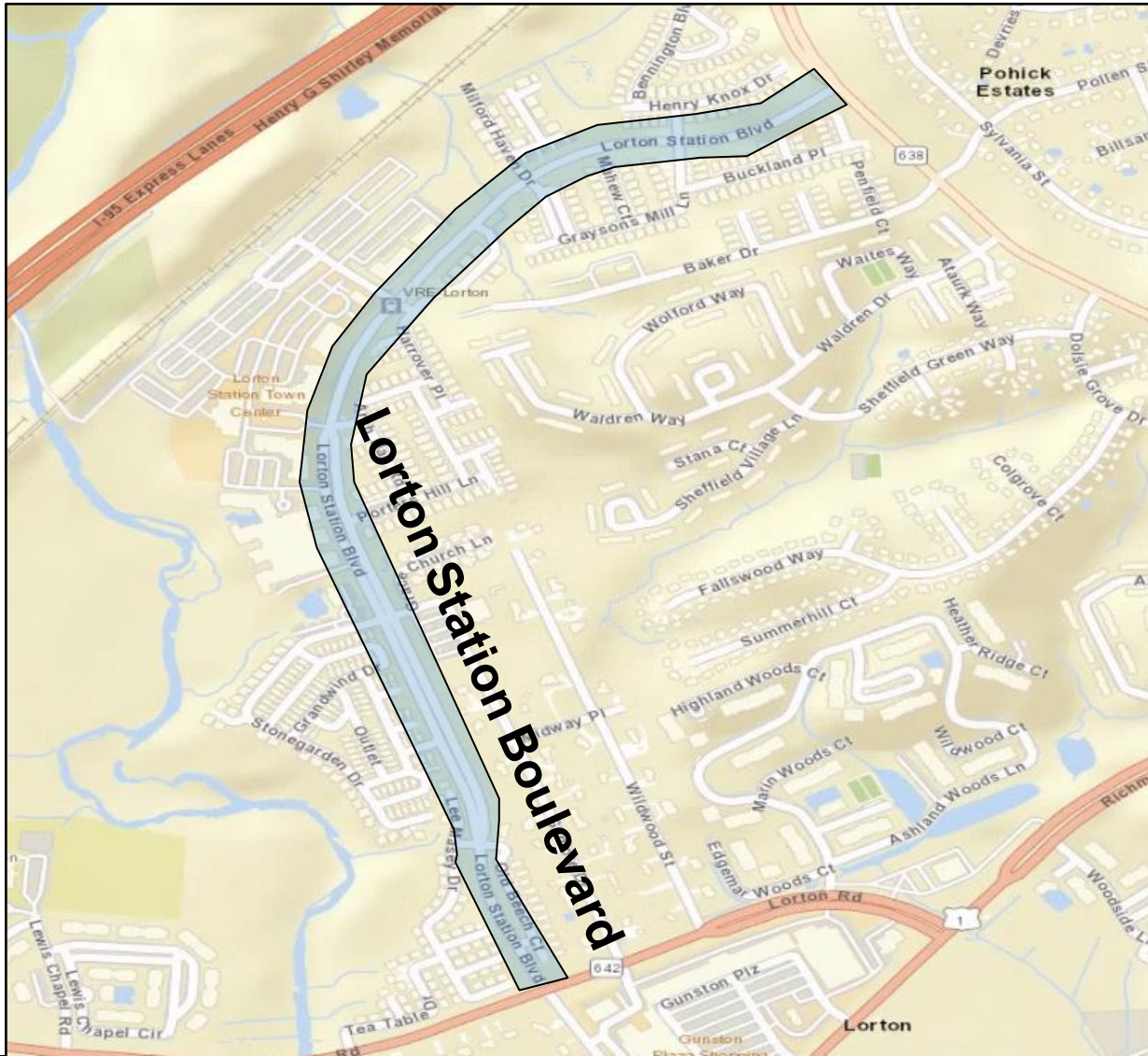
*Lorton Road
(West of Lorton Station Blvd.)*



Lorton Road (West of I-95)



Lorton Road (West of I-95)





County of Fairfax, Virginia Lorton Station Blvd. – Plan Aerial View

Lorton Station Boulevard



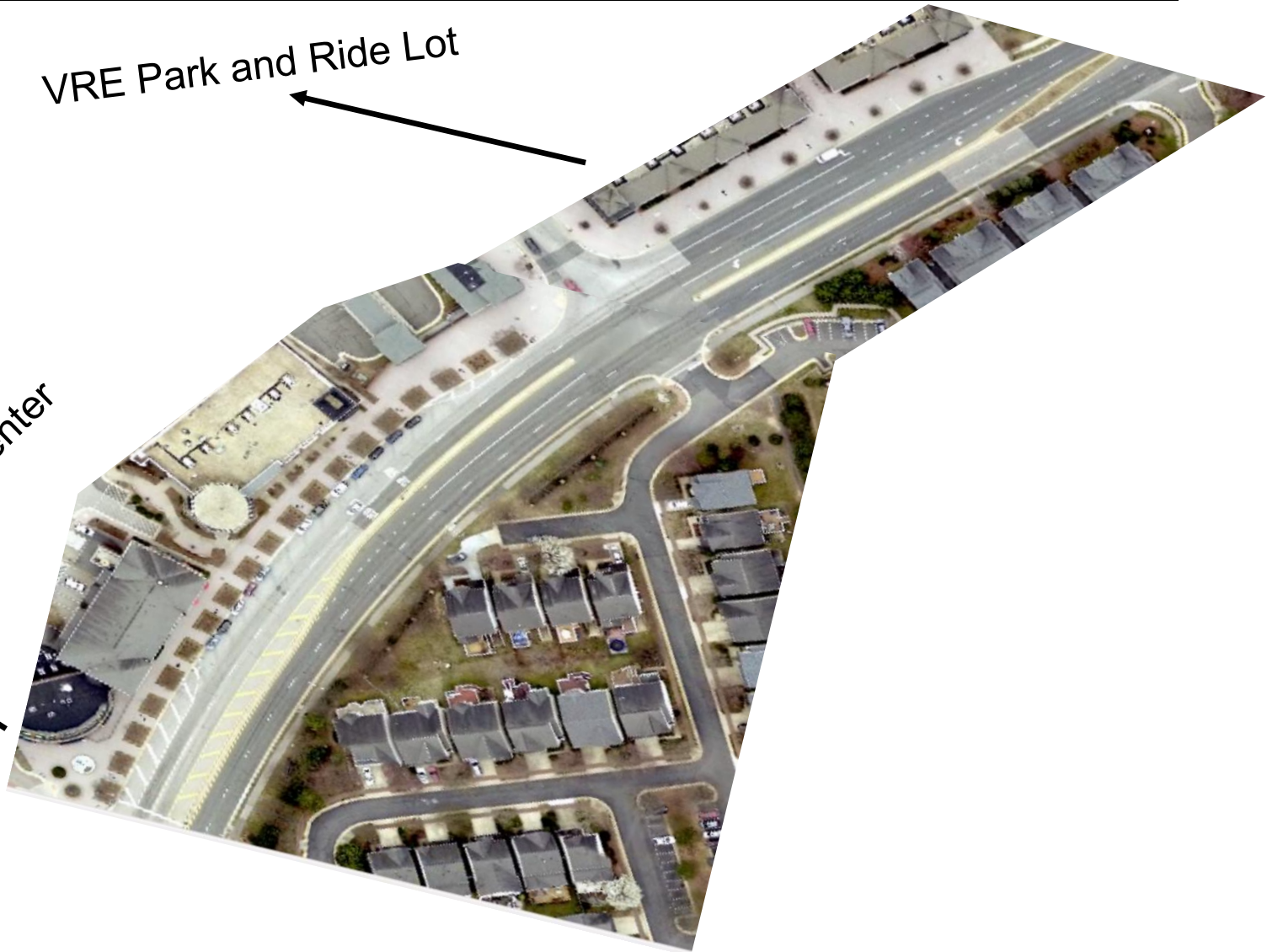
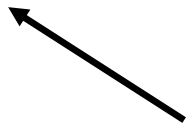


County of Fairfax, Virginia Lorton Station Blvd. – Plan Aerial View

VRE Park and Ride Lot



Lorton Station Town Center





County of Fairfax, Virginia Lorton Station Blvd. – Plan Aerial View

Lorton Station Town Center
←





- Fairfax County is updating and combining the Bicycle Master Plan and the Countywide Trails Plan into the ActiveFairfax Transportation Plan
- The plan will establish a vision and a roadmap for implementation of safe, convenient, and enjoyable streets and trails in Fairfax County.
- Fairfax County is holding a meeting to gather comments from the public on:

Thursday, April 22, 2021: 6:30PM via WebEx
https://www.fairfaxcounty.gov/transportation/news/t07_21

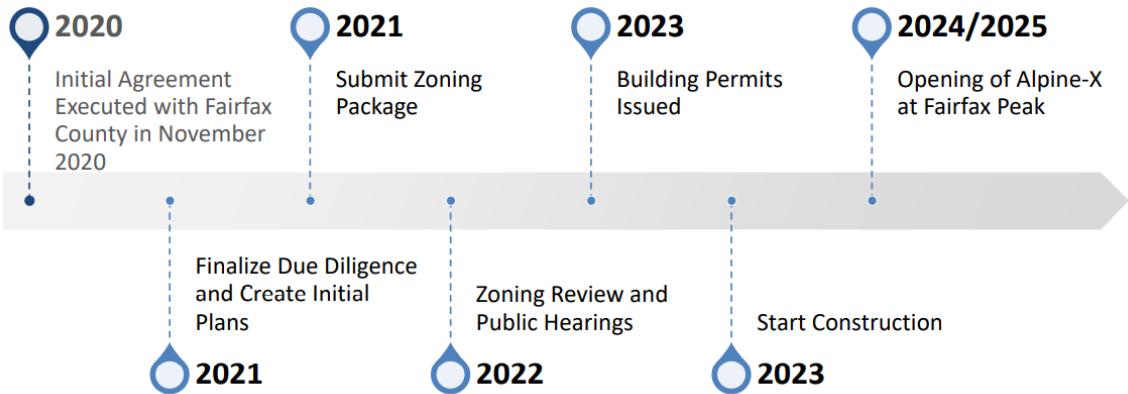




Lorton Visioning Study Area



Current Estimated Timeline





Questions?

Sean Schweitzer

Sean.Schweitzer@Fairfaxcounty.gov