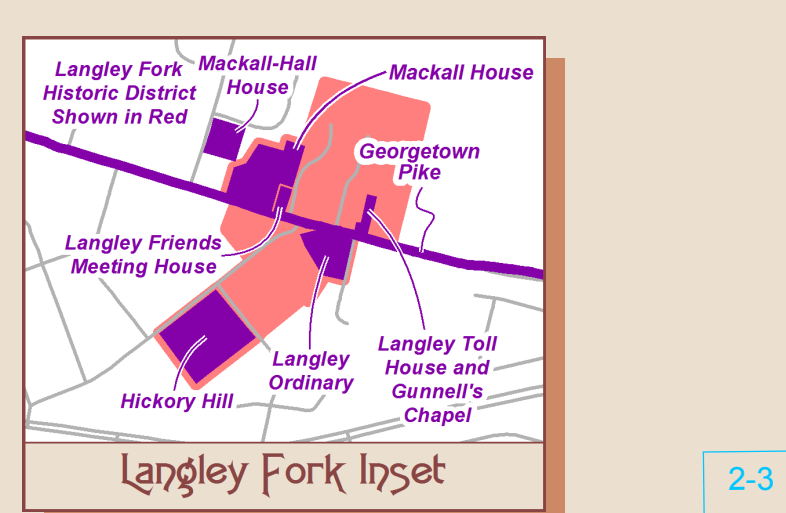
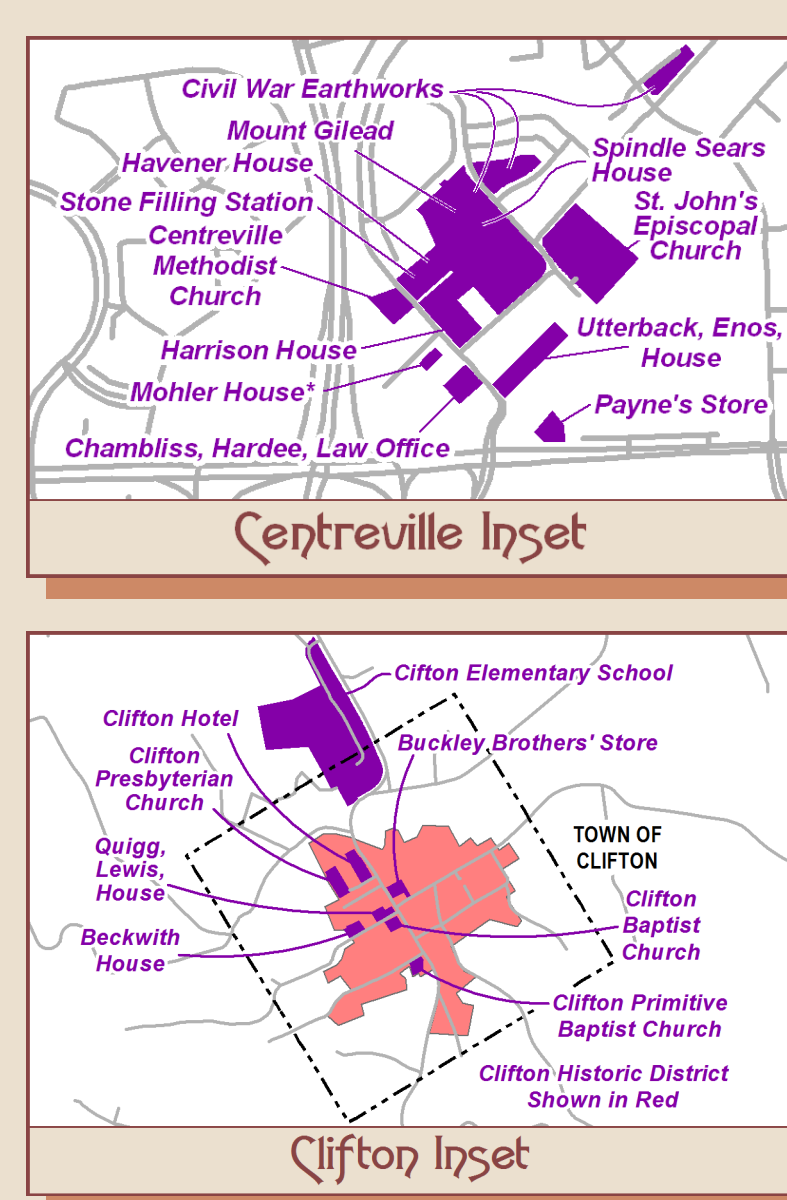
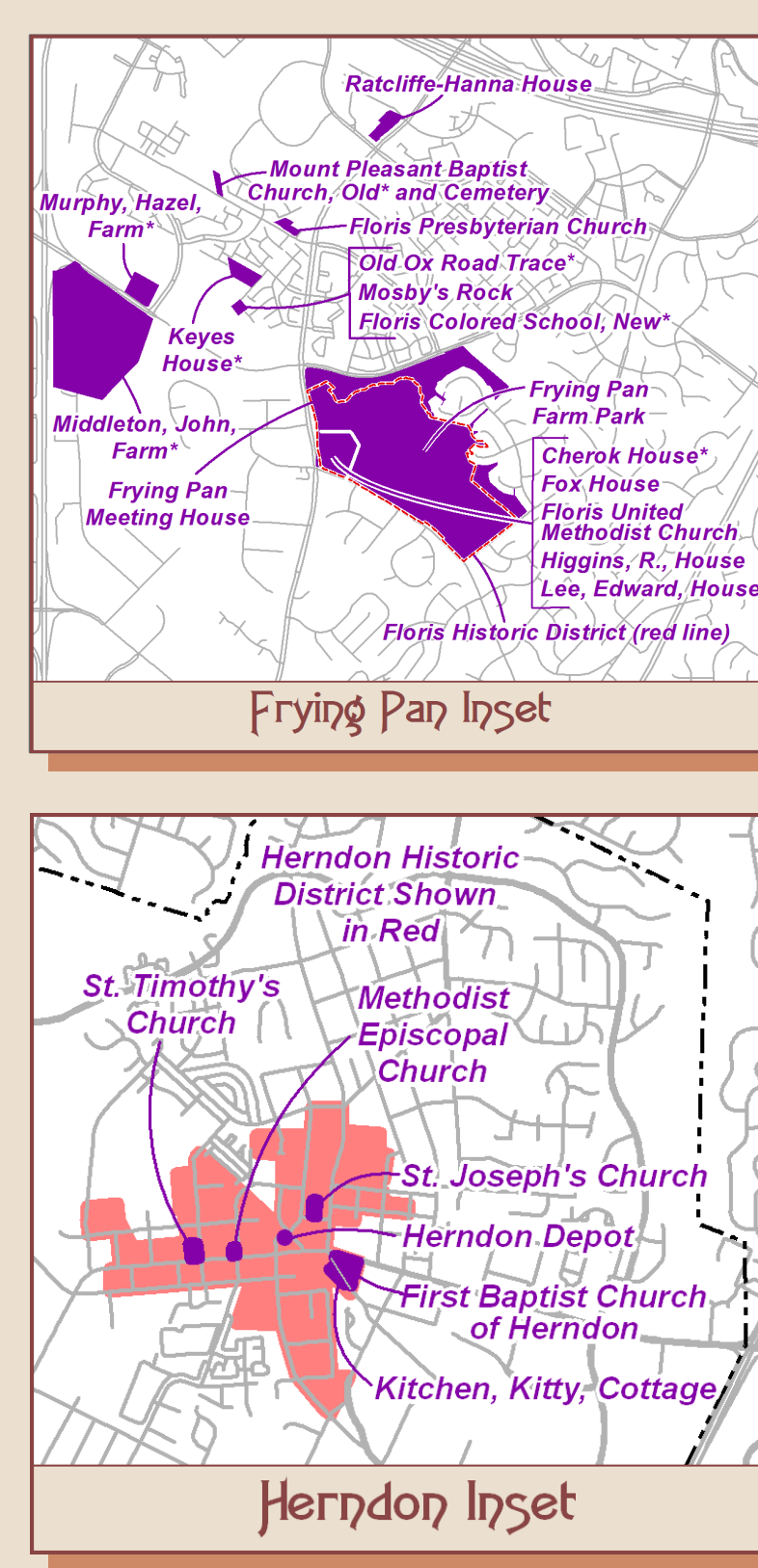


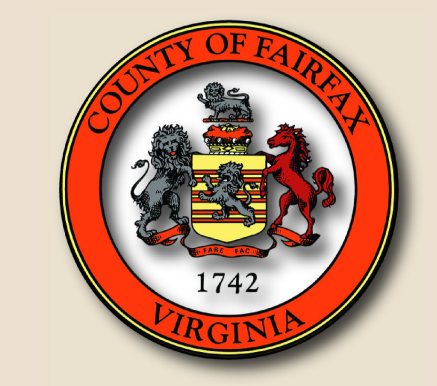
Index

- Azconk United Methodist Church – 109-1
- Adams-Nelson-Sowell-Hirst Cemetery – 31-1
- Andalusia* – 102-2
- Andrew Chapel School – 19-4
- Andrew Chapel United Methodist Church – 19-4
- Annandale Grange/Pioneer Grange – 60-1
- Annandale Methodist Church – 60-4
- Antioch Christian Church – 26-3
- Appledore/Poplar Vale – 36-3
- Arch Hall – 117-2
- Arch Grove – 28-2
- Ashland – 91-2
- Balantyne – 31-1
- Bayless House – 82-4
- Beaufort Park – 21-3
- Beckwith House – 75-4 see Clifton Inset
- Belmont/Cook Washington House – 118-1
- Belvale – 91-4
- Belvoir Mansion Ruins and the Fairfax Grave – 115-4
- Bethel Primitive Baptist Church – 19-4
- Bethlehem Baptist Church – 102-1
- Blennens – 30-2
- Bloomfield – 63-3
- Bowman, A. Smith, Distillery/Wetzel Town Hall – 17-4
- Brimstone Hill/Arnold Farm – 87-1
- Brown's Chapel – 11-4
- Buckley Brothers Store – 75-4 see Clifton Inset
- Bull Neck Gold Mine – 20-2
- Bull Run Bridge – 63-2
- Burgundy Farm Country Day School – 82-2
- Burke Methodist Church/Burke Station – 78-1
- Burke, Sias, House – 78-3
- Cabell's Mill – 54-2
- Cabell's Mill Miller's House/Middlegate – 54-2
- Cameron Parish Church Ruins and Cemetery* – 5-4
- Camp Alger Headquarters – 49-1
- Camp Humphreys Pump Station and Filler Building – 109-3
- Carly – 110-3
- Centerville Baptist Church – 27-1
- Centerville Methodist Church – 54-4 see Centerville Inset
- Chambers, Harlow, Law Office – 54-4 see Centerville Inset
- Charlton Plantation Store House – 45-1
- Chenoweth House – 25-1 see Frying Pan Inset
- Chesapeake Methodist Church – 31-3
- Church of the Good Shepherd – 69-3
- Church of the Holy Spirit – 70-3
- Civil War Earthworks – 34-4 see Centerville Inset
- Clark House – 61-3
- Claude Moore Colonial Farm at Turkey Run – 22-3
- Clifton Baptist Church – 75-4 see Clifton Inset
- Clifton Elementary School – 75-4 see Clifton Inset
- Clifton Historic District – 75-4 see Clifton Inset
- Clifton Hotel – 75-4 see Clifton Inset
- Clifton Presbyterian Church – 75-4 see Clifton Inset
- Clifton Primitive Baptist Church – 75-4 see Clifton Inset
- Cookleville House* – 25-1
- Cockeater Town Archeological Site – 113-3
- Collingswood – 102-4
- Colvin Run Community Center – 12-4
- Colvin Run Mill – 18-2
- Colvin Run Mill Miller's House – 18-2
- Confederate Fortifications Historic Site – 74-2
- Contestation – 36-3
- Comwell Farm – 13-1
- Comwell Henry, House* – 10-2
- Conrad Memorial Methodist Church and Lewis Chapel – 114-1
- Cross House – 44-4
- Crouch Schoolhouse – 14-2
- D.C. Boundary Stone A, W. Cornerstone – 40-4
- D.C. Boundary Stone B, N.W. Line #1 – 41-1
- D.C. Boundary Stone C, N.W. Line #2 – 41-1
- D.C. Boundary Stone D, N.W. Line #3 – 31-4
- D.C. Boundary Stone E, S.W. Line #6 – 62-1
- D.C. Boundary Stone F, S.W. Line #7 – 61-4
- D.C. Boundary Stone G, S.W. Line #8 – 61-3
- D.C. Workhouse and Reformatory – 107-1
- Delaware Mapping Agency/Heron NRE Control Site/W-83 – 121-1
- Dover House – 20-2
- Downscrest – 22-4
- Dranesville Methodist Church – 6-4
- Dranesville Tavern – 6-3
- Drower's Rest – 20-1
- Dunbarston – 6-4
- Dunn Loring Elementary School – 39-4
- Dunn Loring Methodist Church – 39-4
- Eastern Shore House – 18-2
- Eight Oaks – 41-1
- Elmwood – 30-1
- Evergreen – 82-2
- Fairfax Arms – 113-3
- Fairfax Chapel – 115-2
- Fairfax County Courthouse – 57-4
- Fairfax County Jail – 57-4
- Fairfax Courthouse Site – 29-3
- Fairfax Station – 77-1
- Fairfax Villa Community Park – 56-4
- Fairview Farm – 82-2
- Faulkner House* – 31-2
- Ferry Landing – 110-3
- Fleena Center at Wolf Trap Farm Park – 28-2
- First Baptist Church of Chesapeake – 31-3
- First Baptist Church of Herndon – 18-2 see Herndon Inset
- First Baptist Church of Vienna – 38-4
- Fleet Hill School – 47-2
- Flores Colored School, New* – 15-4 see Frying Pan Inset
- Flores Historic District – 25-1 see Frying Pan Inset
- Flores Presbyterian Church – 16-3 see Frying Pan Inset
- Flores United Methodist Church – 25-1 see Frying Pan Inset
- Folin, J.N. House – 12-4
- Fort Belvoir Historic District – 115-2
- Fort Belvoir Military Railroad Historic Corridor – 108-2
- Fort Hunt – 111-2
- Fort Lyon Earthworks* – 83-1
- Fort Marcy – 31-2
- Fort Willard Circle – 83-3
- Fourteen of Faith in National Memorial Park – 50-1
- Four Stars – 13-3
- Fox House – 25-1 see Frying Pan Inset
- Franklin Farm House/Oak Hill – 35-2
- Freedom Hill Fort – 39-1
- Freeman Store – 38-2
- Frying Pan Farm Park – 25-1 see Frying Pan Inset
- Frying Pan Meeting House – 25-1 see Frying Pan Inset
- Furnace Road Bridge/Barnel Bridge – 107-3
- Gabrielson Gardens Park/Great Crest – 37-1
- Gardens, The – 38-1
- George Washington Memorial Parkway – 22-4
- Georgetown Pike – 21-4
- Grand View – 109-2
- Great Falls Grange – 13-1
- Great Falls Park Historic District – 13-2
- Great Falls Post Office/Centerville School – 13-1
- Greek Revival House – 18-2
- Green Spring Farm/Moss House – 72-1
- Gunnell, John, House – 8-3
- Gunnell's Run – 8-3
- Guntion Hill – 119-1
- Hannah P. Oak/Ernest House – 113-3
- Hartshorn – 76-1
- Harrison House – 54-4 see Centerville Inset
- Hatmark School* – 48-4
- Haverer House – 54-4 see Centerville Inset
- Head's Hill Farm* – 39-1
- Hendon Depot – 16-2 see Herndon Inset
- Hendon Historic District – 16-2 see Herndon Inset
- Hickory Hill – 22-3 see Langley Fork Inset
- Hidson Springs Farm – 8-4
- Higgins, R. House – 25-1 see Frying Pan Inset
- Highland View/Flagg House – 40-3
- Hitzcock House – 19-4
- Hollen Hall – 93-3
- Hollen Hills – 93-3
- Holly Hill – 89-1
- Hollywood Farm – 40-3
- Homes Run Acres – 59-2
- Hope Park – 67-4
- Hope Park Mill and Miller's House – 67-3
- Hunter House – 48-1
- Huntley – 92-2
- Hutchison, John, Cemetery – 33-2
- Hutchison, John, House – 33-2
- Hutchison, Sias, Cemetery – 33-4
- Hutchison, Sias, House – 33-4
- Hutchison, Sias, Saw and Grind Mill Dam and Ruins – 43-2
- Ivywood Presbyterian Church – 39-4
- Indian Spring Farm – 113-2
- Innissel – 76-1
- Ivy Chimney – 5-4
- Jackson House – 20-4
- Jackson, Luther P., School – 49-3
- Jackson, Veranda, House – 19-2
- Jefferson School – 3-3
- Jerusalem Baptist Church – 68-3
- Kabram Springs* – 19-2
- Kenmore – 19-3
- Keyes House – 15-4 see Frying Pan Inset
- King Subdivision – 15-2
- Kitchen, Kitty, Cottage – 16-2 see Herndon Inset
- LaGrange* – 108-3
- Lahay, Robert, House – 28-3
- Lake Anne Village Center – 17-2
- Lake Barcroft Dam – 81-4
- Lanard House – 93-4
- Lane's Mill Ruins/Newton's Mill Ruins – 64-2
- Langley Fork Historic District – 22-3 see Langley Fork Inset
- Langley Friends Meeting House – 22-3 see Langley Fork Inset
- Langley Ordinary – 22-3 see Langley Fork Inset
- Langley Toll House and Gunnell's Chapel – 22-3 see Langley Fork Inset
- Laurel Grove Baptist Church* – 91-1
- Laurel Grove School – 91-1
- Laurel Hill – 107-1
- Lavers Road – 27-3
- Lebanon – 114-1
- Lee, Edward, House – 25-1 see Frying Pan Inset
- Lee, James E., Negro Elementary School – 50-4
- Leeton – 44-4
- Legato School – 57-4
- Leigh, Dr. Alfred, House – 12-4
- Leigh, Vernon, House – 19-4
- Level Green – 65-2
- Lewisville House/Meadowbrook – 30-3
- Lewisville Post Office – 30-3
- Lewis Oliver House* – 18-2
- Leighton Site – 116-3
- Little Hill – 102-2
- Little Zion Baptist Church and Cemetery – 77-4
- Long View – 46-2
- Madall Hill House – 22-3 see Langley Fork Inset
- Madall Hill House – 22-3 see Langley Fork Inset
- Manassas Gap Railroad Independent Line* – 52-3, 53-1, 59-4, 60-3, 71-2

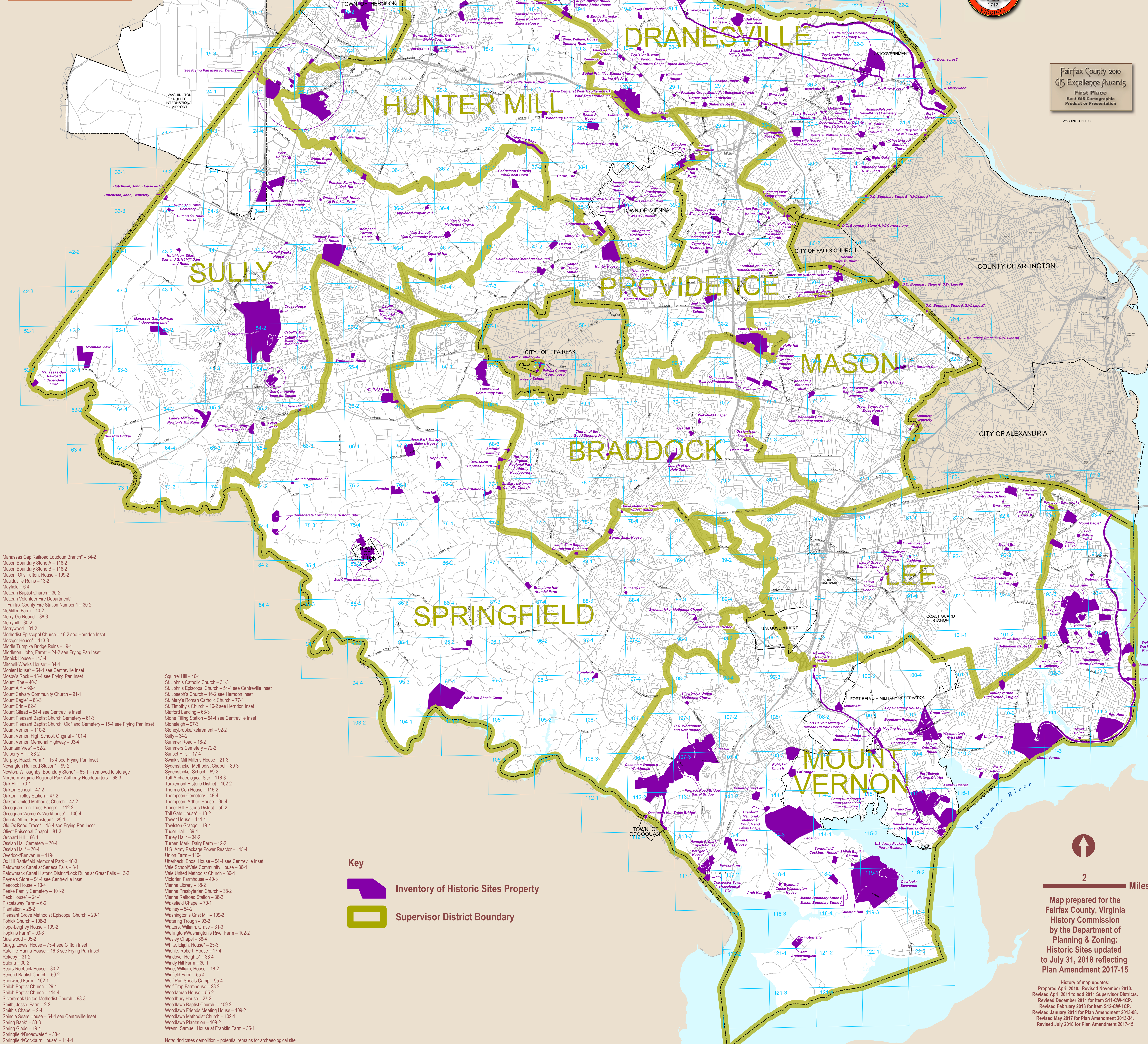


Inventory of Historic Sites

Fairfax County History Commission

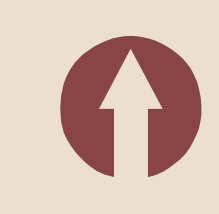


Fairfax County 2010 GIS Excellence Awards
First Place
 Best GIS Cartographic Product or Presentation



Key

- Inventory of Historic Sites Property
- Supervisor District Boundary



2 Miles

Map prepared for the Fairfax County, Virginia History Commission by the Department of Planning & Zoning. Historic Sites updated to July 31, 2018 reflecting Plan Amendment 2017-15

History of map updates:
 Prepared April 2010. Revised November 2010.
 Revised April 2011 to add 2011 Supervisor Districts.
 Revised December 2011 for Item S11-CW4-CP.
 Revised February 2013 for Item S12-CW-ICP.
 Revised January 2014 for Plan Amendment 2013-08.
 Revised May 2017 for Plan Amendment 2017-15.
 Revised July 2018 for Plan Amendment 2017-15.