



# Natural Landscaping at County Facilities Plan Amendment 2018-CW-2CP

## Planning Commission Environment Committee Meeting

Joe Gorney, Senior Environmental Planner  
DPD, Planning Division

September 26, 2019

# Progress to Date

- BOS Authorization
  - November 20, 2018
- Planning Commission (PC) Environment Committee Meetings
  - January 24, 2019
  - March 21, 2019
  - June 27, 2019
  - September 26, 2019
- Stakeholder Meetings
  - April 8, 2019 (staff)
  - August 14, 2019 (staff)
  - August 20, 2019 (community)
- PC & Community Natural Landscapes Tour
  - June 22, 2019
- Staff Tour of National Garden & Bartholdi Park
  - September 18, 2019
- PC & BOS Public Hearings
  - TBD



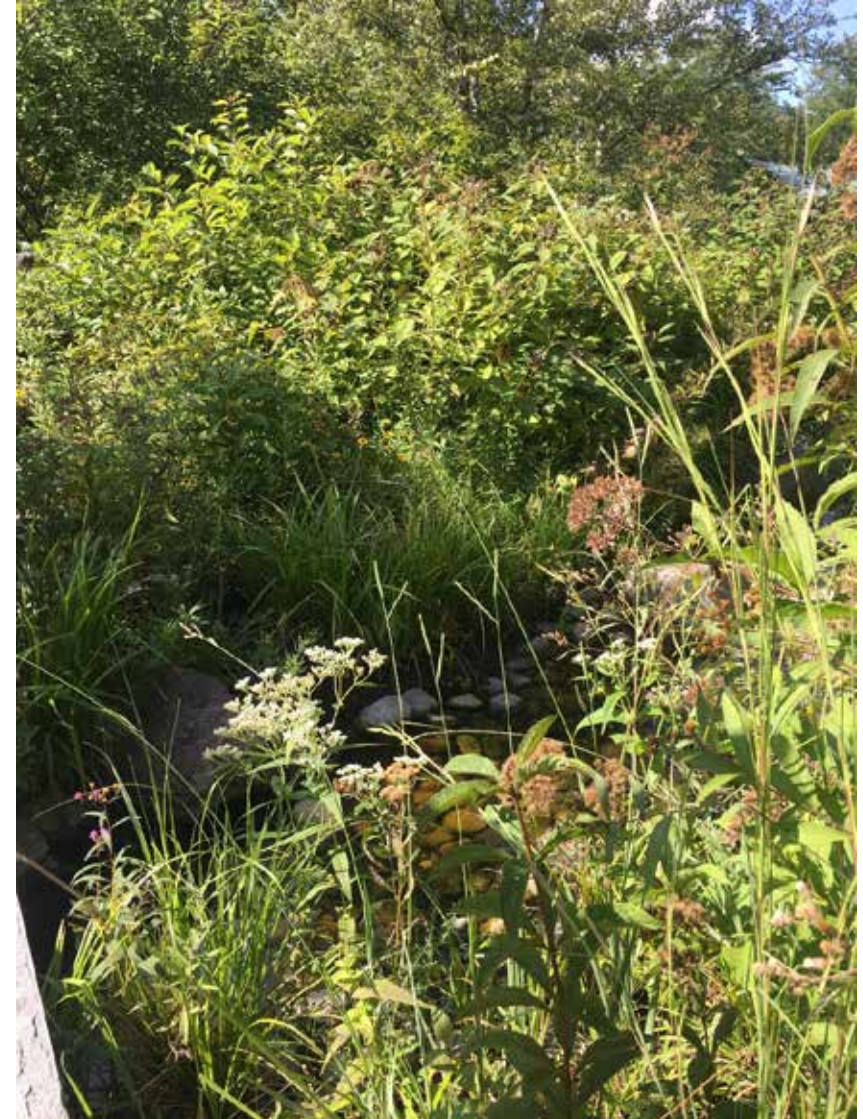
# Staff Stakeholder Themes

- Differentiate b/w natural & traditional landscaping
- Design for implementation & maintenance
- Review regulatory guidance, contracts, and warranties
- Contracts & Contracting
- Training & information
- Sufficient staff to review & inspect
- Feedback loops during review process
- Education/Partnerships/Volunteers
- Specific Strategies
  - Soils – weed-free, aerate
  - Rating systems – SITES
  - Plant during appropriate seasons (not for ribbon-cuttings)
  - Bigger is not always better
  - Salt management



# Community Stakeholder Themes

- Clarification re: application of plan amendment
  - Would like to see applied throughout County
- Sustainable and resilient
  - Biodiversity
  - Mitigate heat
  - Aesthetics
  - Long-lived
  - Water & air quality
- Questions
  - Actions of other jurisdictions
  - Definitions
  - Measuring success
  - Rating systems
- Wording suggestions, but already contains the essential elements



# Stakeholder Suggested Edits

Objective 6; Policy a.

Apply, within the design of public facilities and their associated sites, and in consideration of factors including costs, health, safety/security, and the broader context of facility and site needs (e.g., recreational uses), low impact development (LID) practices and natural landscaping methods ~~where~~ feasible to the greatest extent possible / with the goal to minimize resource consumption, reduce stormwater runoff, decrease life-cycle maintenance requirements, increase the habitat value of each site, and increase soil and plant health.

**NATURAL LANDSCAPING:** A landscaping approach through which the aesthetic and ecological functions of landscapes installed in the built environment are improved, and through which natural areas are restored by preserving and recreating land and water features and native plant communities. Sustainable landscapes are formed by protecting and restoring natural ecosystem components; maximizing the use of native plants; ~~removing~~ controlling non-native invasive plant species; reducing areas of unnecessary turf grass; reducing or eliminating synthetic inputs; protecting, creating, and maintaining healthy soils; and retaining rainwater on-site through LID practices. In natural areas, only locally native plant species are used to provide the greatest possible ecological benefits. In built landscapes, most of the plant cover is composed of native plant species that support wildlife and improve environmental conditions, although non-invasive non-native plants may be selectively used where appropriate.

# National Garden Highlights

- Located to the west of USBG conservatory
- Built over I-395 tunnel
- Might have been a truck inspection area
- Highlights coastal and piedmont species
- Private advocacy and funding



# Bartholdi Park Highlights

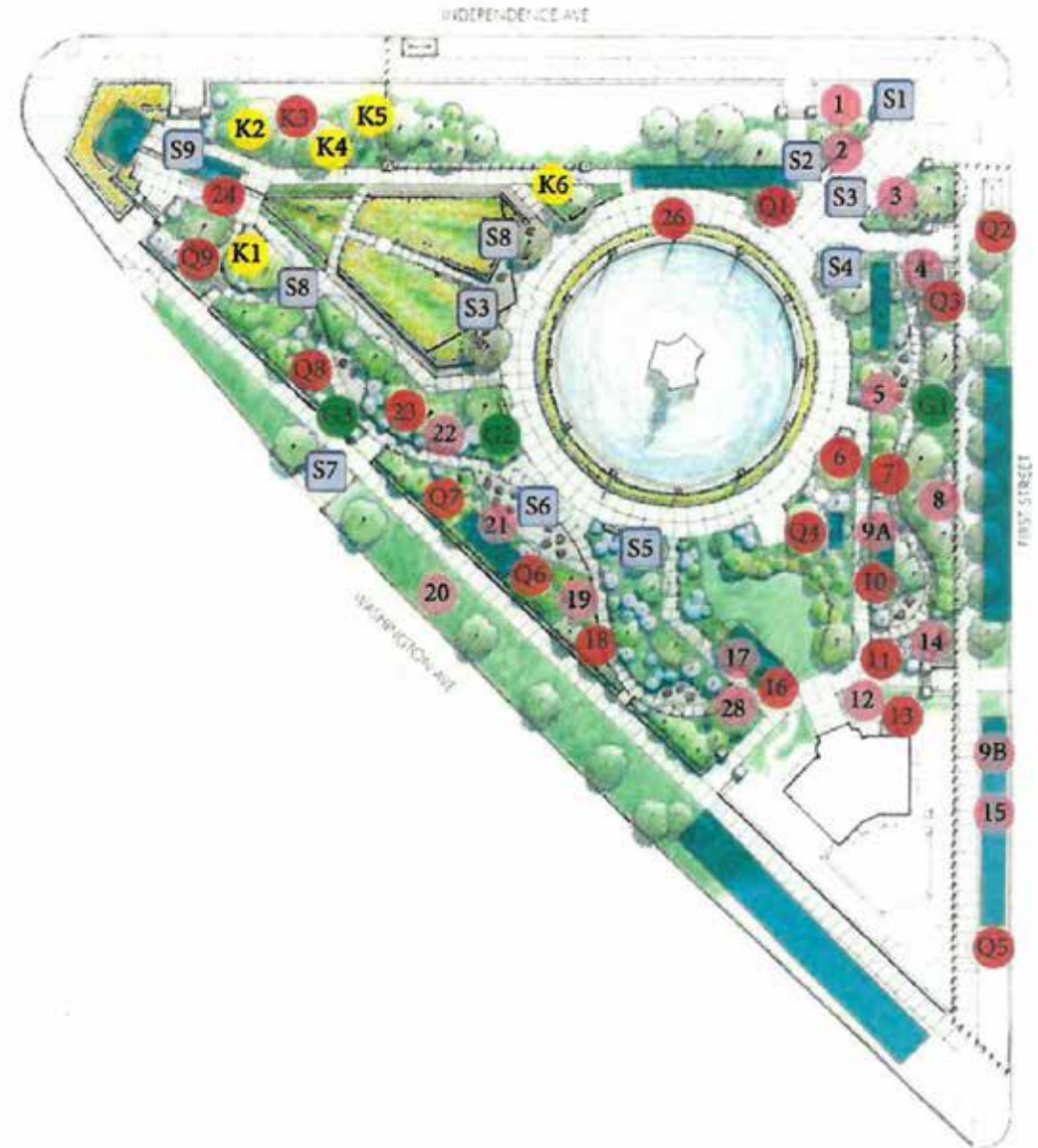


## Bartholdi Park

Plant Highlights & Sustainable Elements



- Key:**
-  Rain Gardens
  -  Field Journal Plants
  -  Other Notable Plants
  -  Kitchen Garden Plants
  -  Grasses
  -  Hardscape Elements



# National Garden & Bartholdi Park Takeaways

- Right plant, right place
- Soil preparation
  - Soil is living system
  - Protect during construction
- Reuse on-site materials
- Smaller caliper will outperform
- Diverse & dense collection of species (will get insects & birds)
- Establishment phase is important
- Manual removal of weeds & invasives
- Use perennials
- Regionally-appropriate plants
- Connect to the place
- Rough up the subsoil
- Deicing
- Landscape improves with age





# Potential Next Steps

- Continued engagement with staff (multi-agency) & community
  - Checklist of natural landscaping practices
  - Design, implementation, and maintenance
- EIP Proposal for Govt. Center – October 15<sup>th</sup> presentation (pilot project)
- Policy Plan Amendment
  - PC Public Hearing
  - BOS Public Hearing





# Questions?



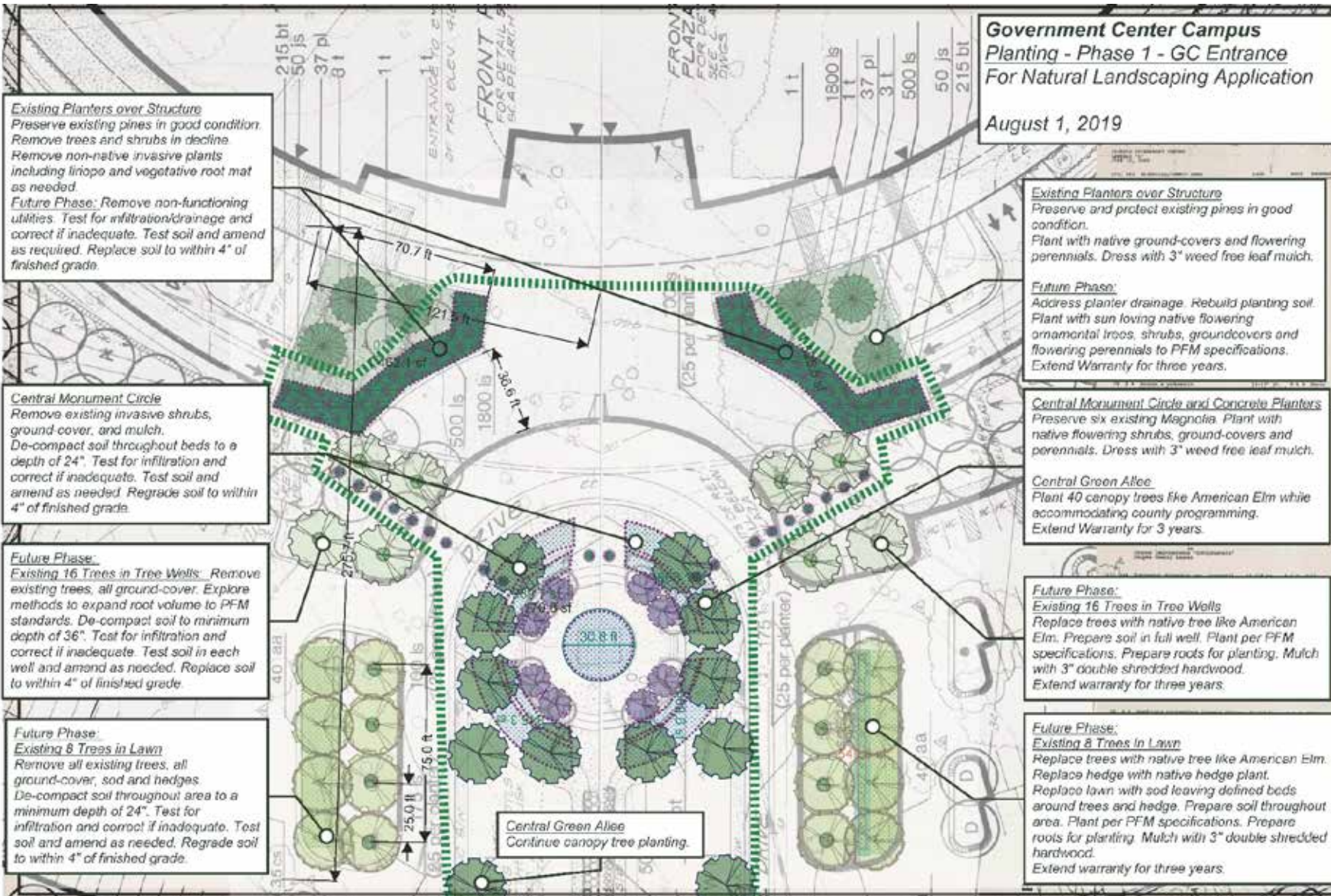
# Environmental Improvement Program (EIP) Government Center Proposal



# Arial Perspective



# Government Center Entrance



# Environmental Improvement Program (EIP)

