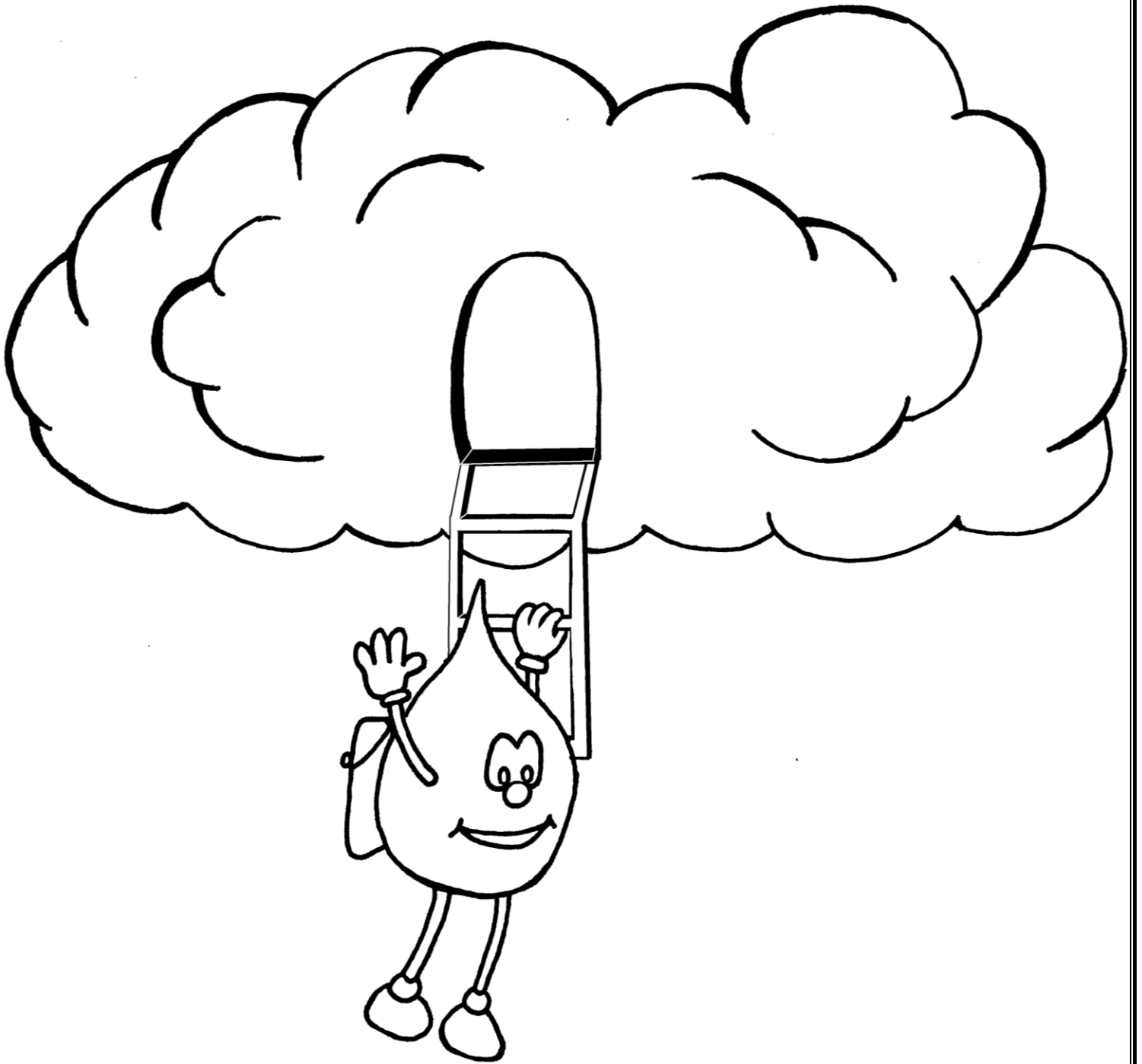


The Adventures of

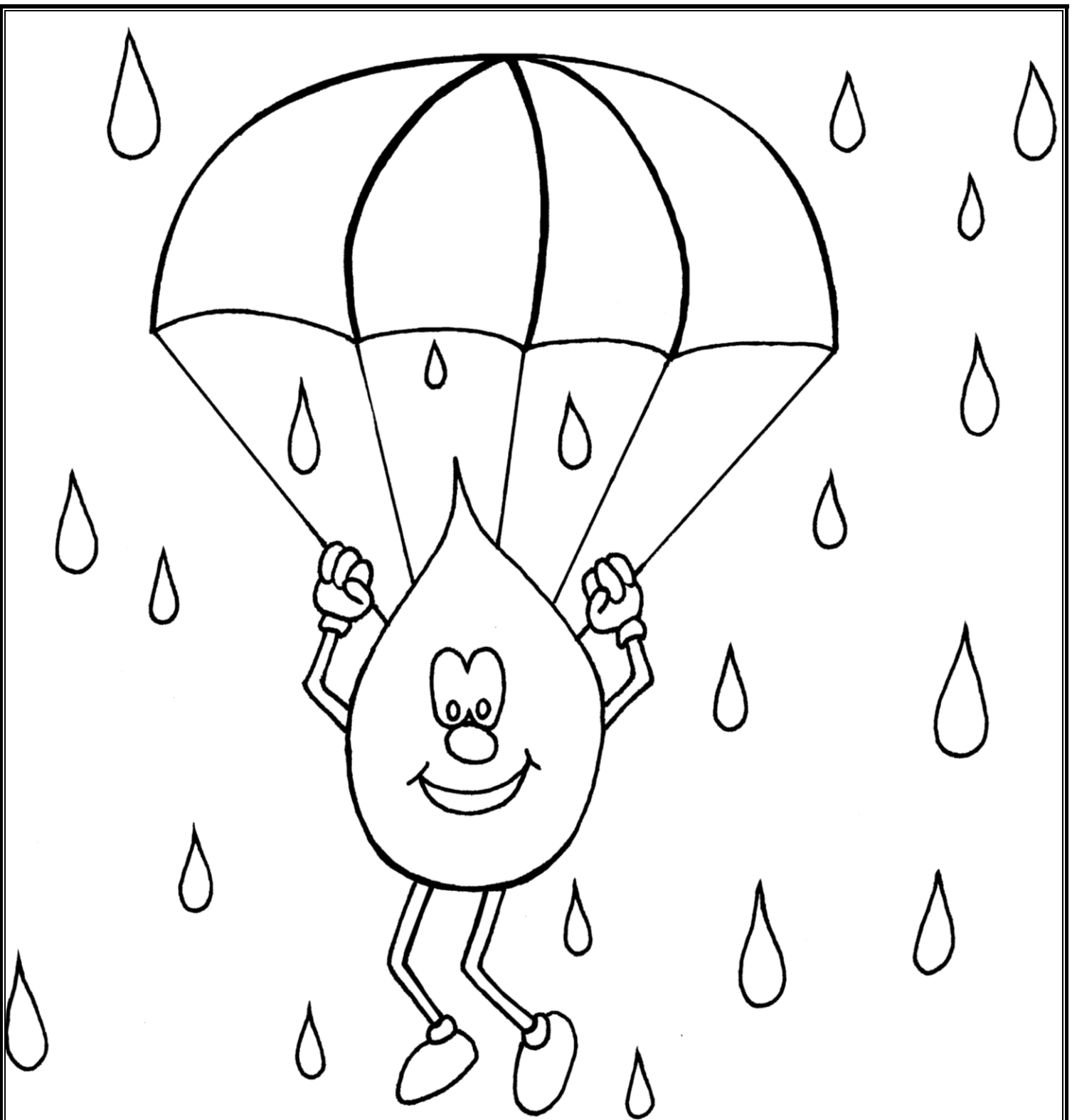


Stormy The Raindrop

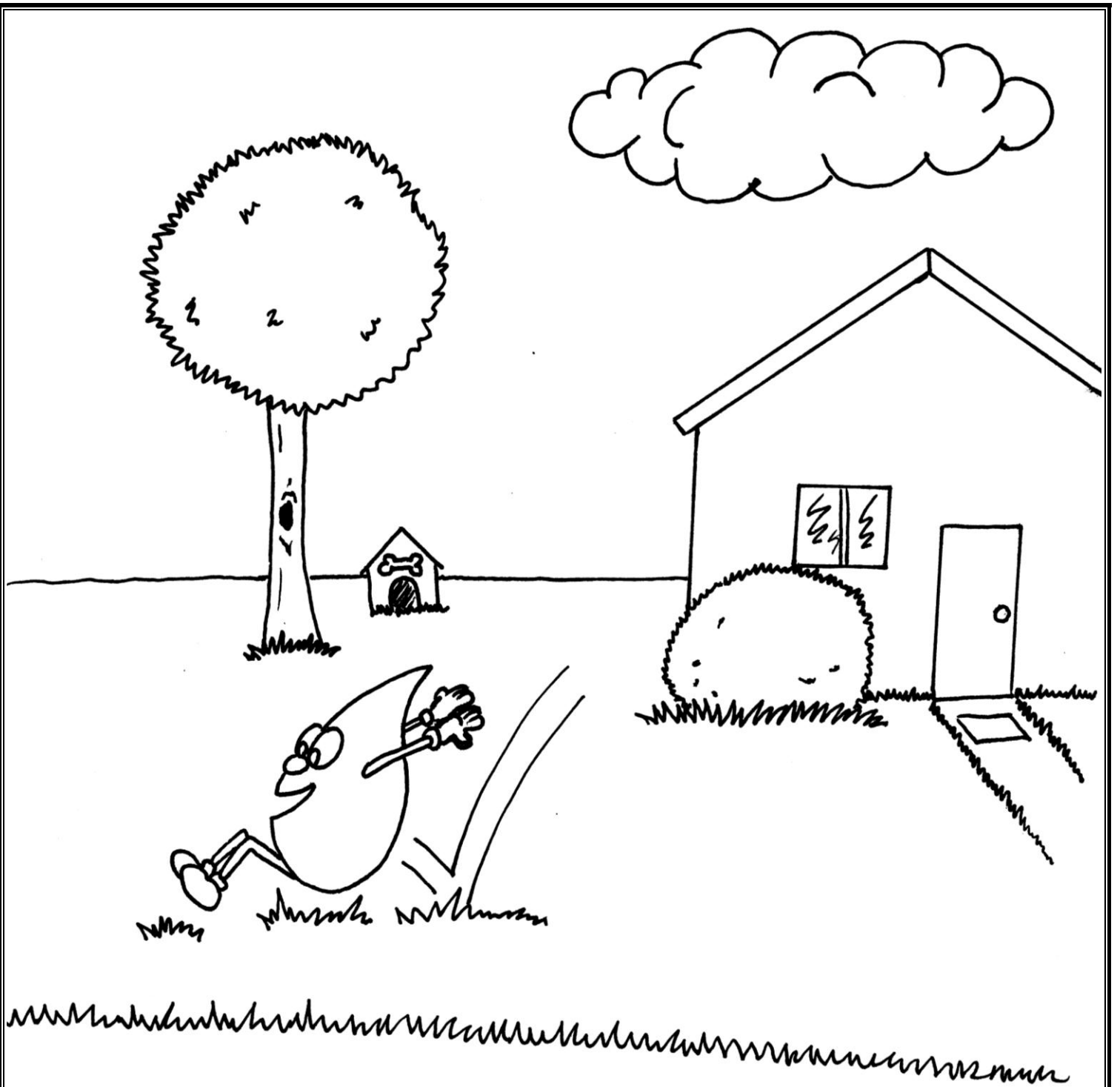
This Activity Book is copyrighted © 2009, all rights reserved. This publication is protected by federal copyright law, and permission to copy material must be obtained from Fairfax County government. If such permission is sought, please contact the Director of Stormwater Planning, 12000 Government Center Parkway, Fairfax, VA 22035



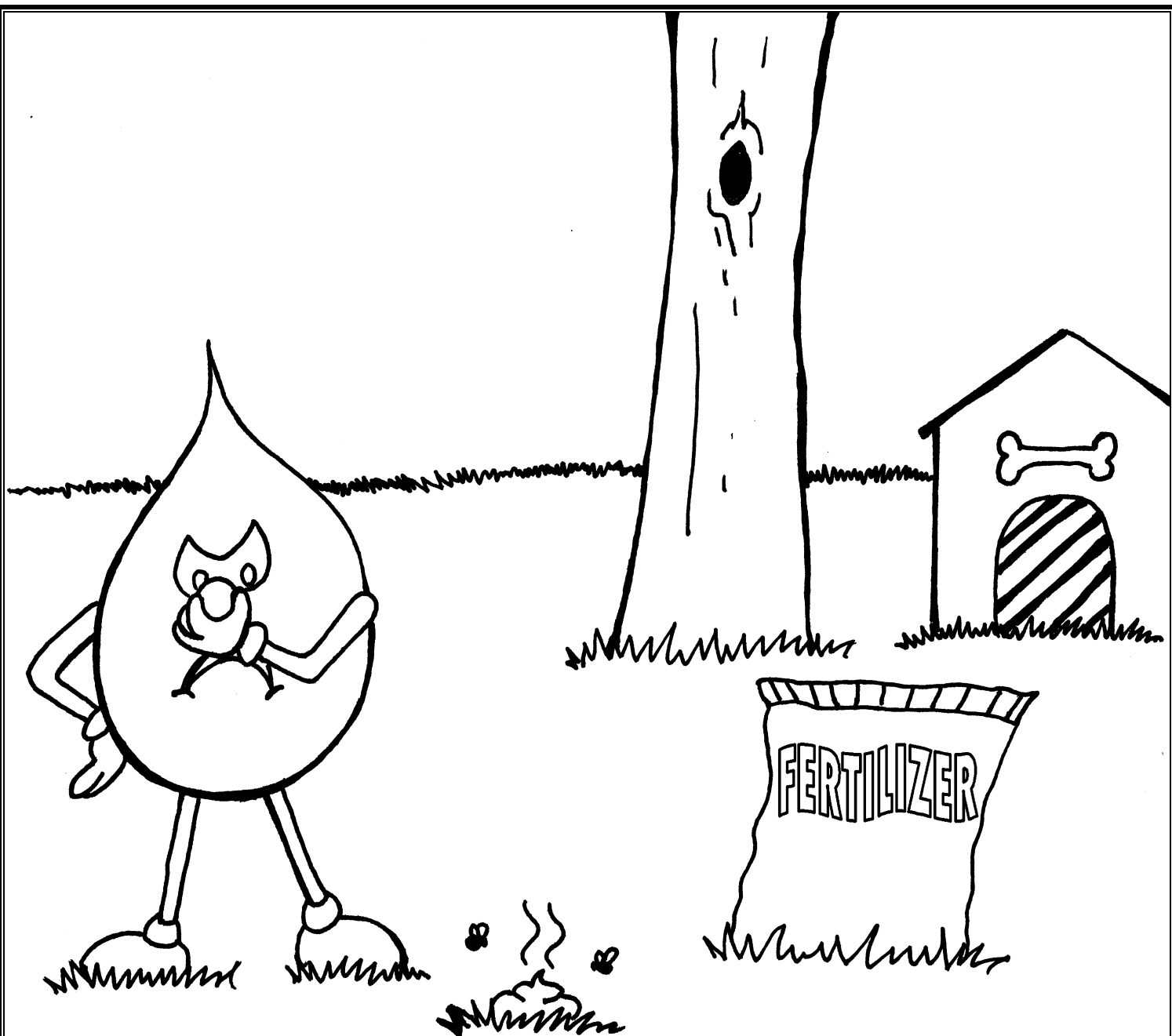
Stormy must get from the storm cloud to the stream without getting polluted. Can you help him stay clean?



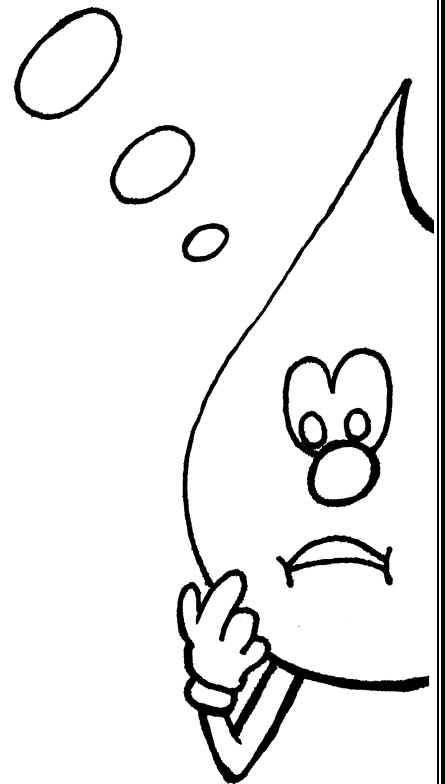
3... 2... 1... Jump! Stormy falls from the storm cloud to the ground.



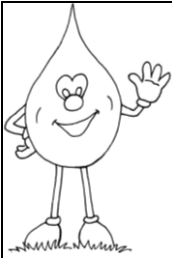
A perfect landing on your lawn! What will Stormy find there?



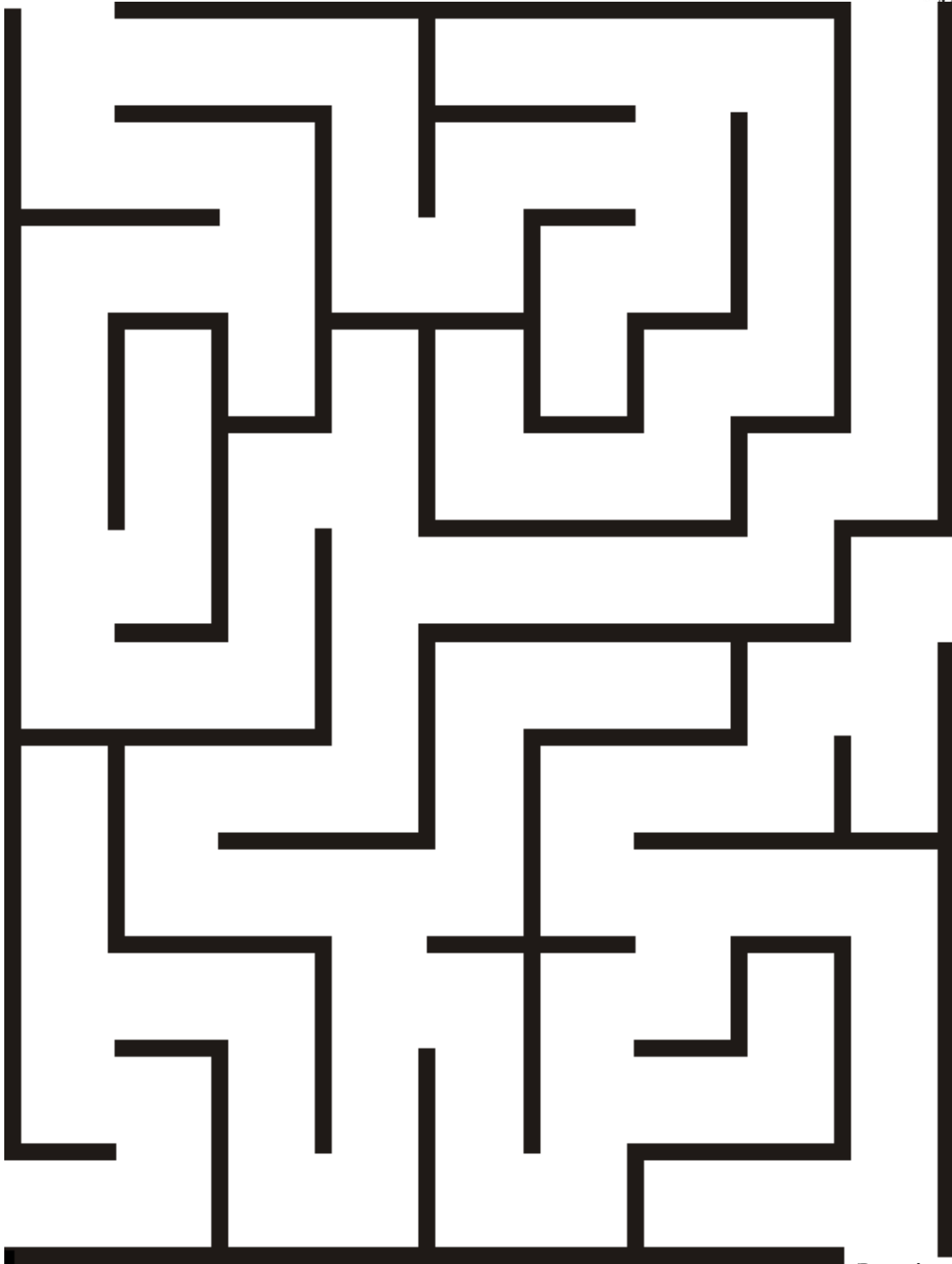
Oh no! There is too much fertilizer on the grass. And someone forgot to pick up the dog poop!



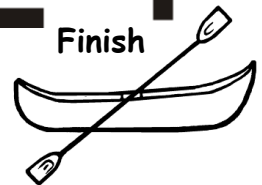
These pollutants will make Stormy dirty.
He doesn't want to carry them to the
stream!



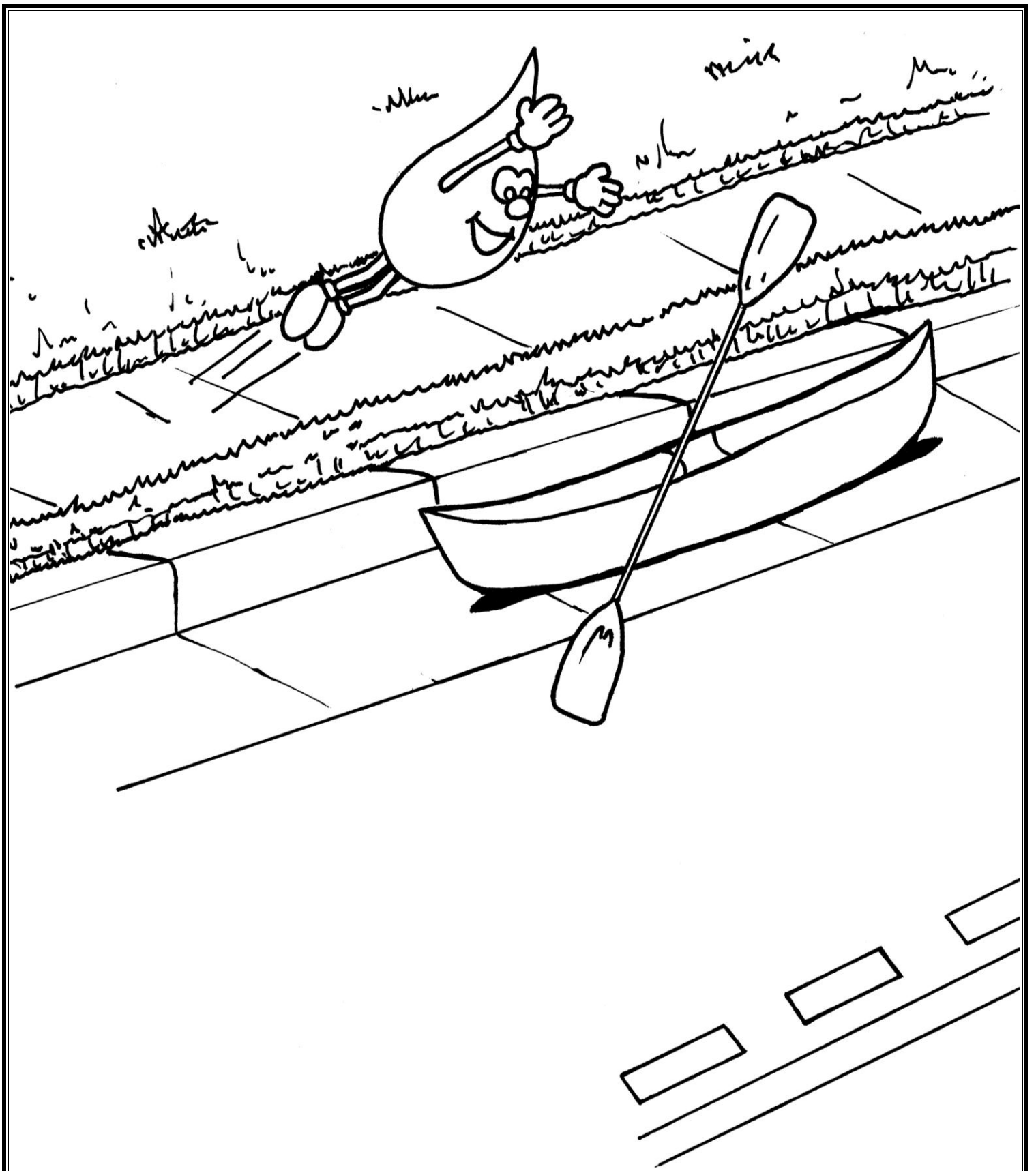
Start



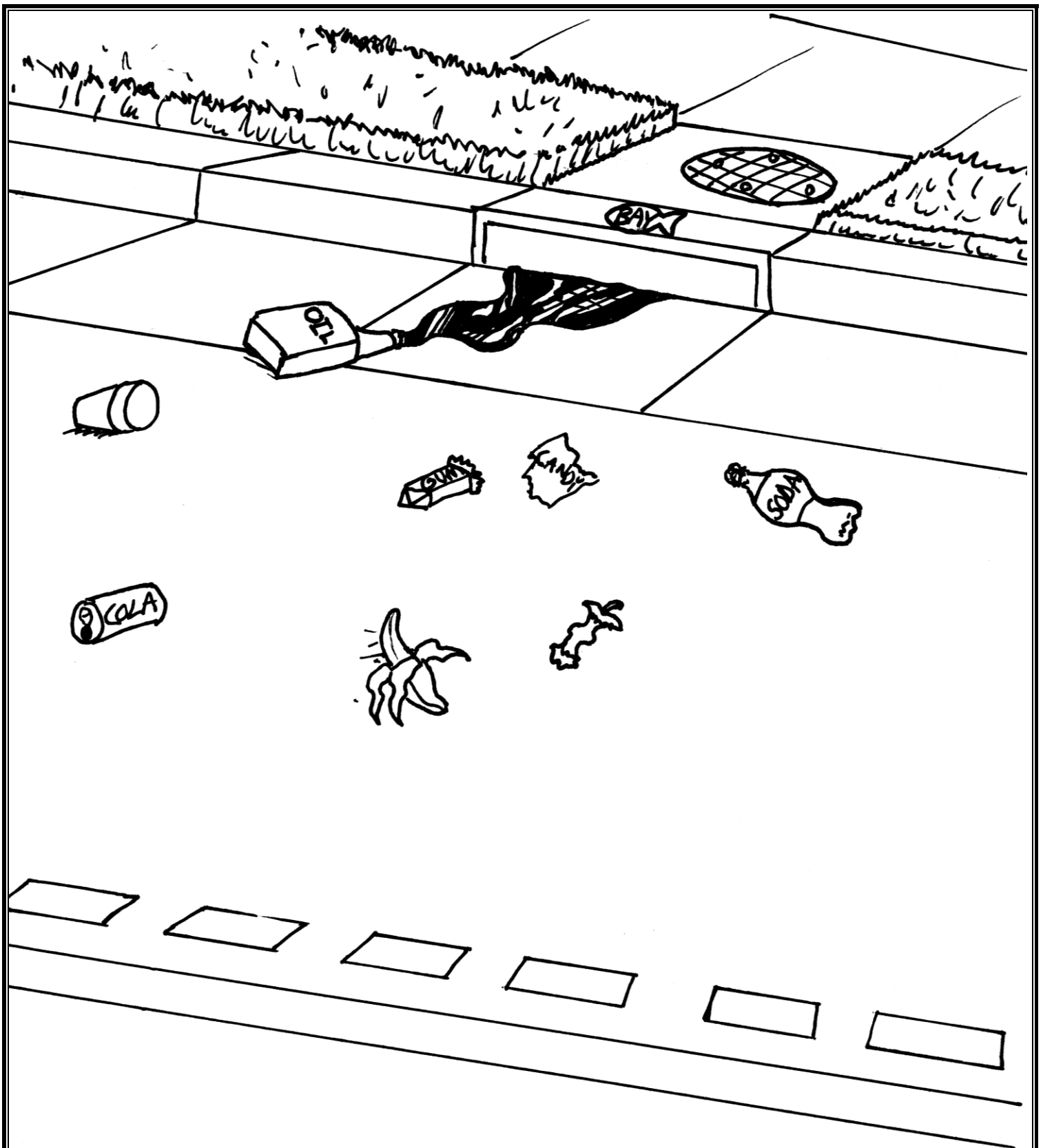
Finish



Help Stormy avoid the pollutants and find his way to your street.



Stormy has made it to your street without getting polluted. What will he find there?



Yuck! Someone has poured oil onto your street. And look at all the litter and trash!

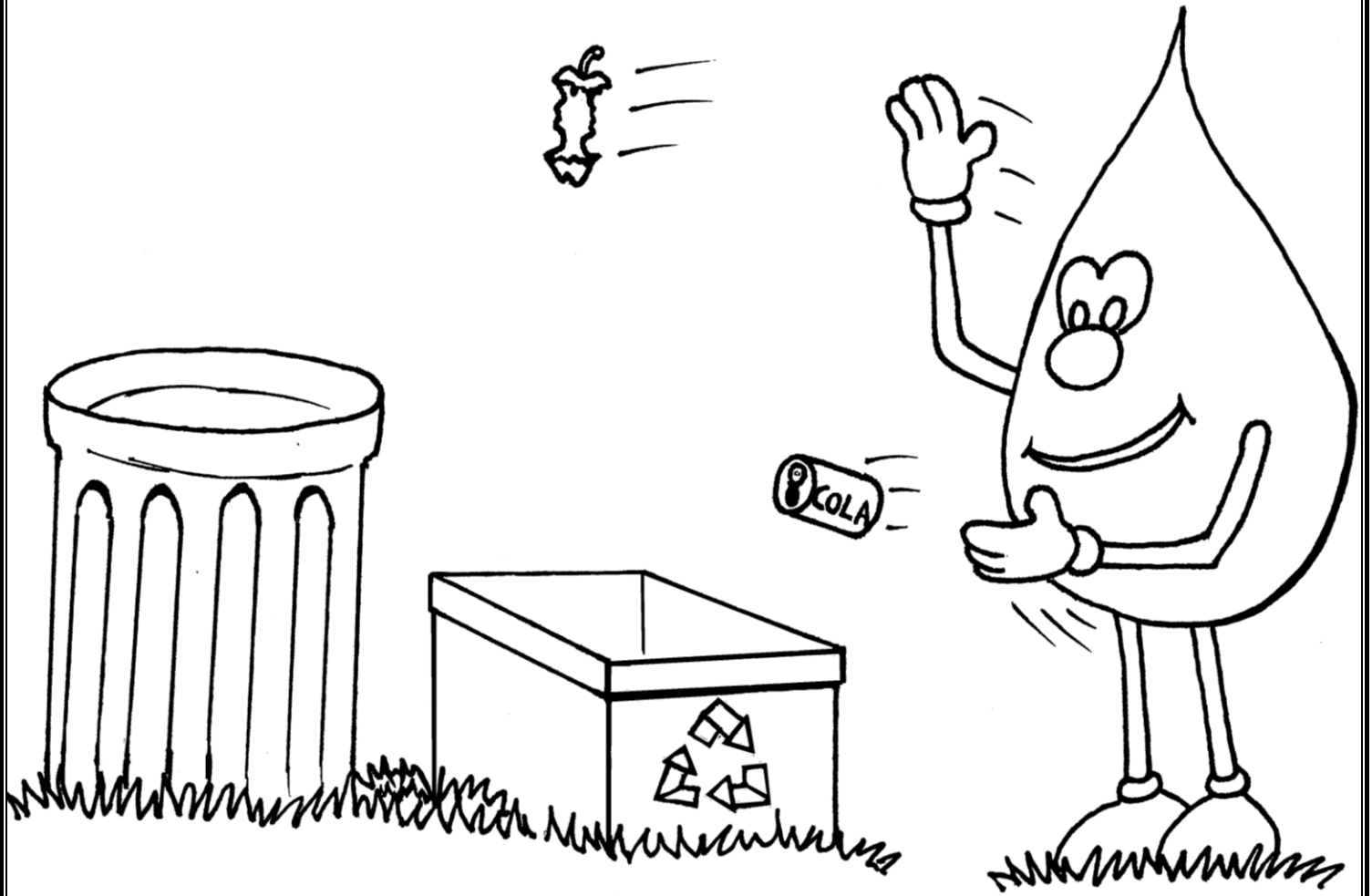
C A N D Y W R A P P E R
I P O N A T L A L R A U
G P R S O D A C A N L C
A L A T C B A T S C C U
R E G G E B O T T L E D
E C T T P E B I I W G B
T O I L B G S R C O G A
T R C J U I C E B O X U
E E I C I L G L A S S E
B T B U B B L E G U M B
U S T A J T G C S L M E
T B A N A N A P E E L U
T G T I A T T B A L E B

candy wrapper
bubble gum
plastic bags
cigarette butt

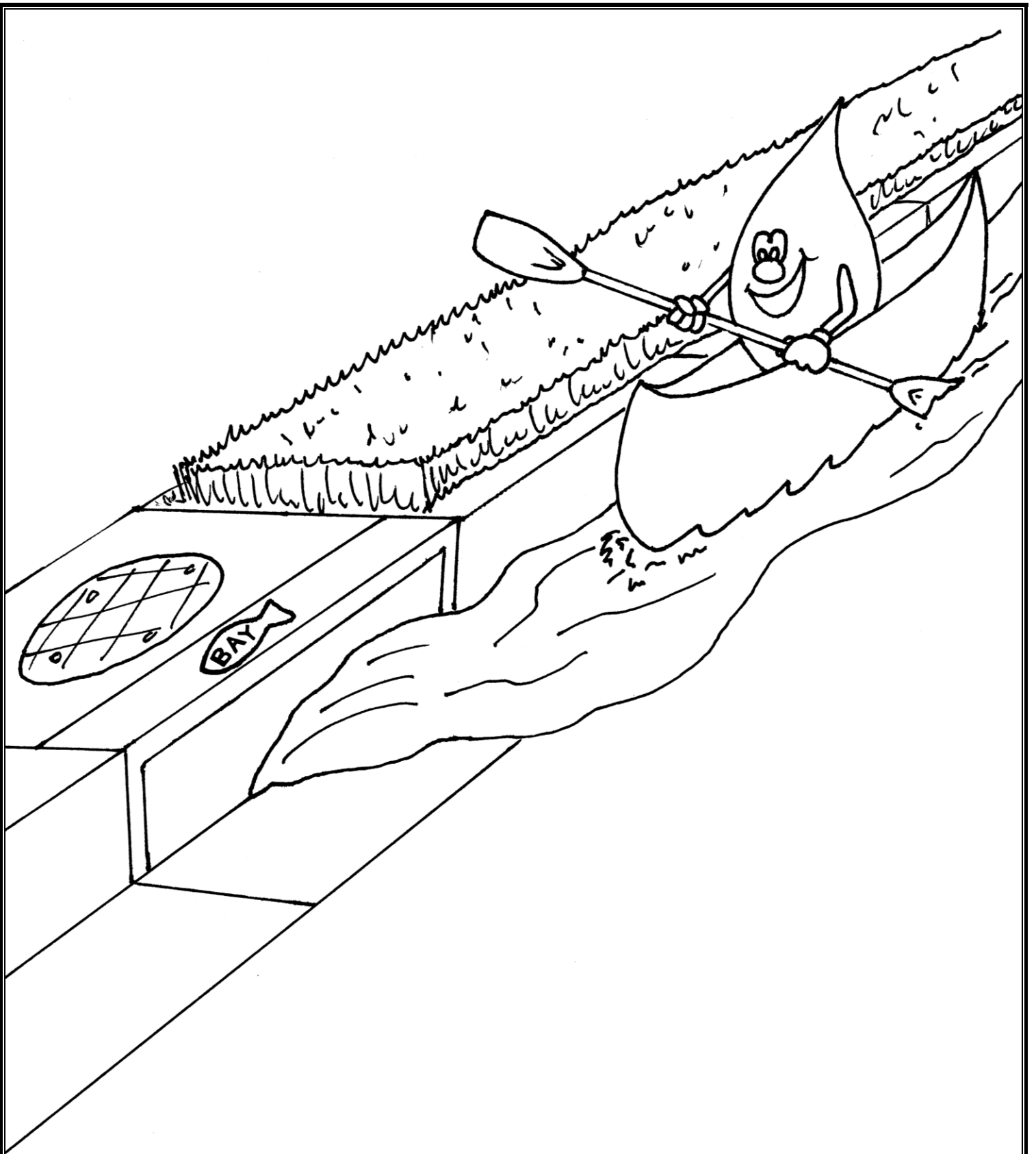
juice box
glass
oil
apple core

soda can
bottle
tire
banana peel

Find and circle all the things that someone carelessly threw away before they wash into the storm drain.



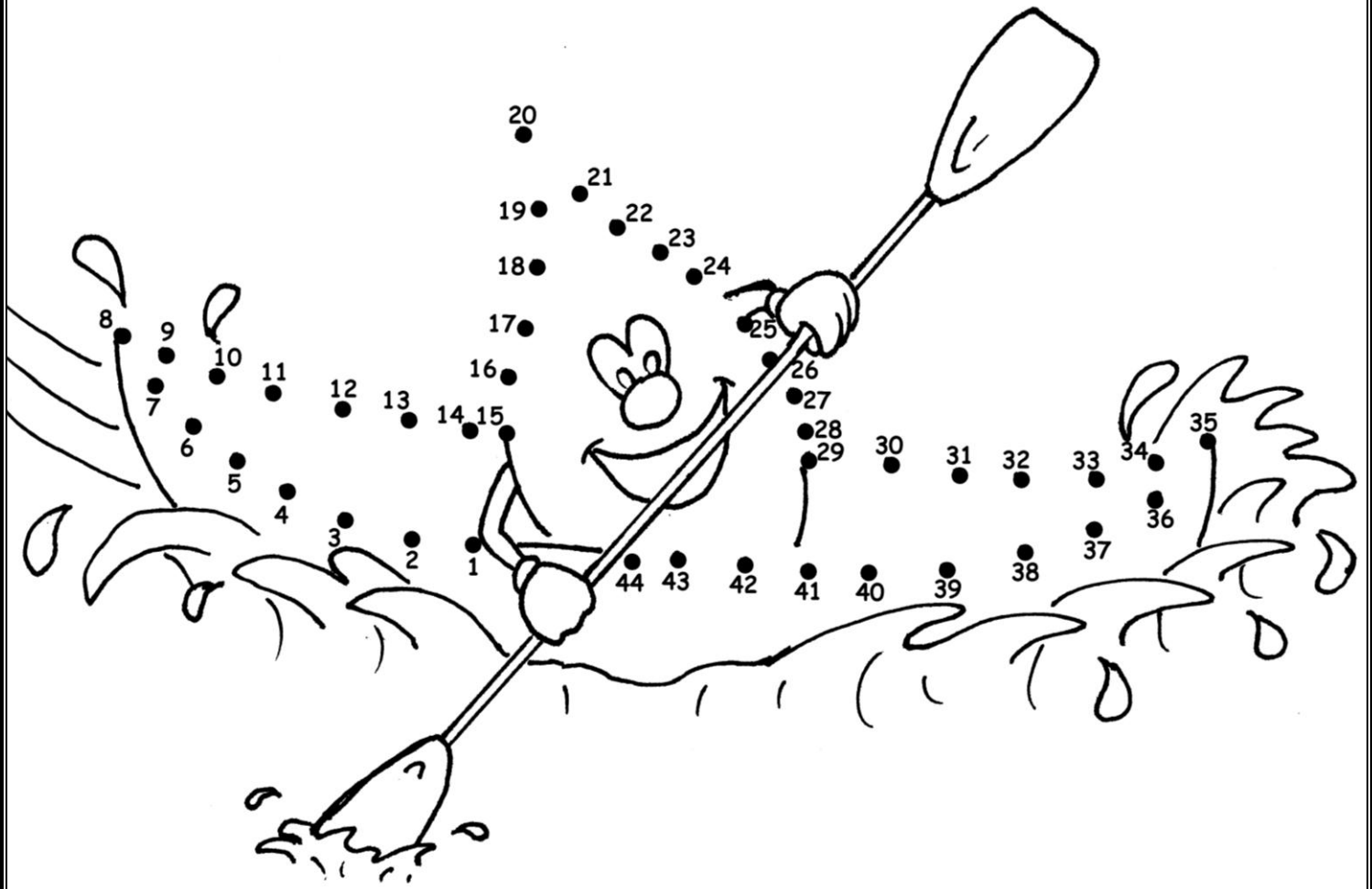
Trash, litter and oil should always be thrown away or recycled.



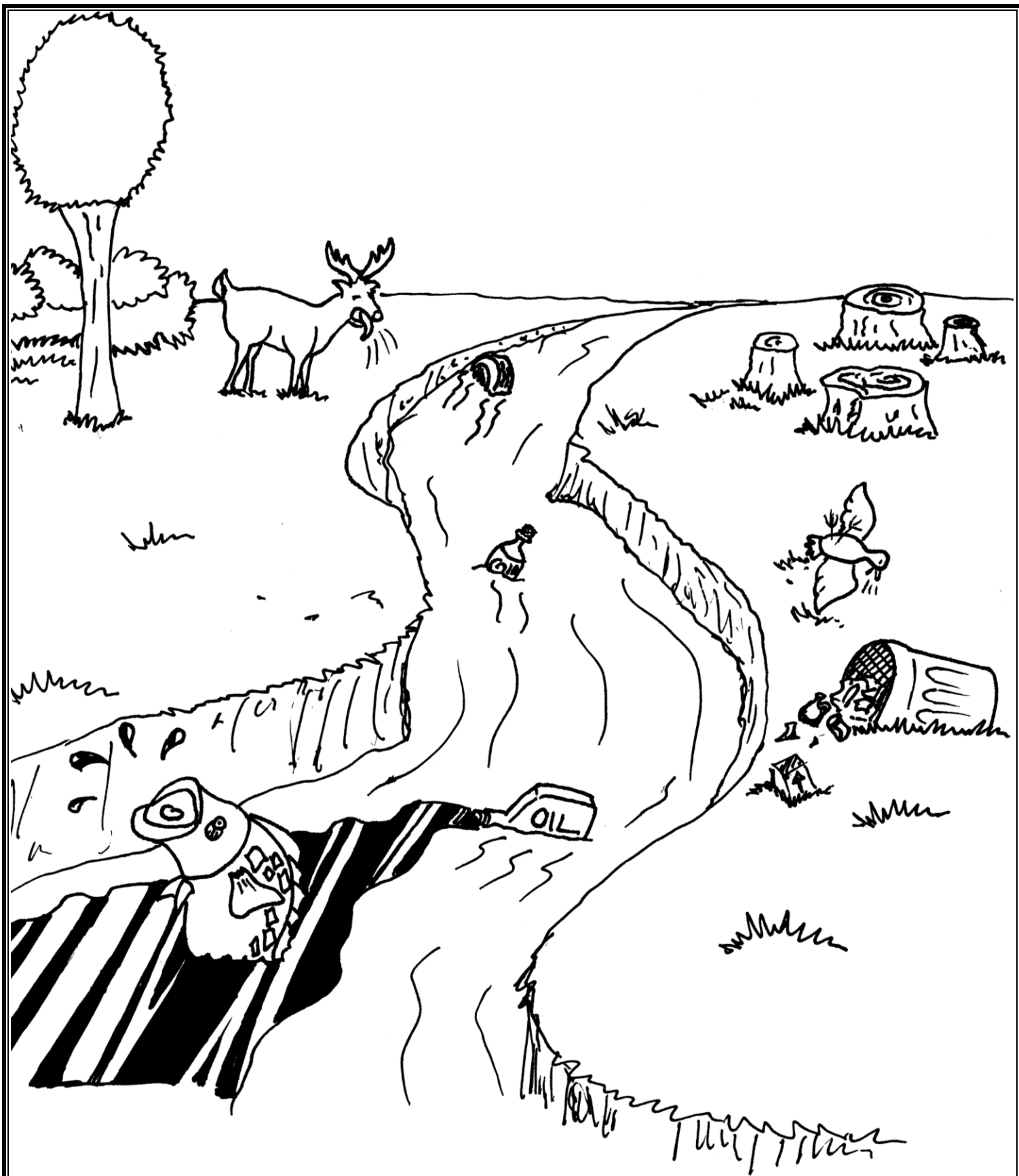
Stormy heads down your street and into the storm drain.



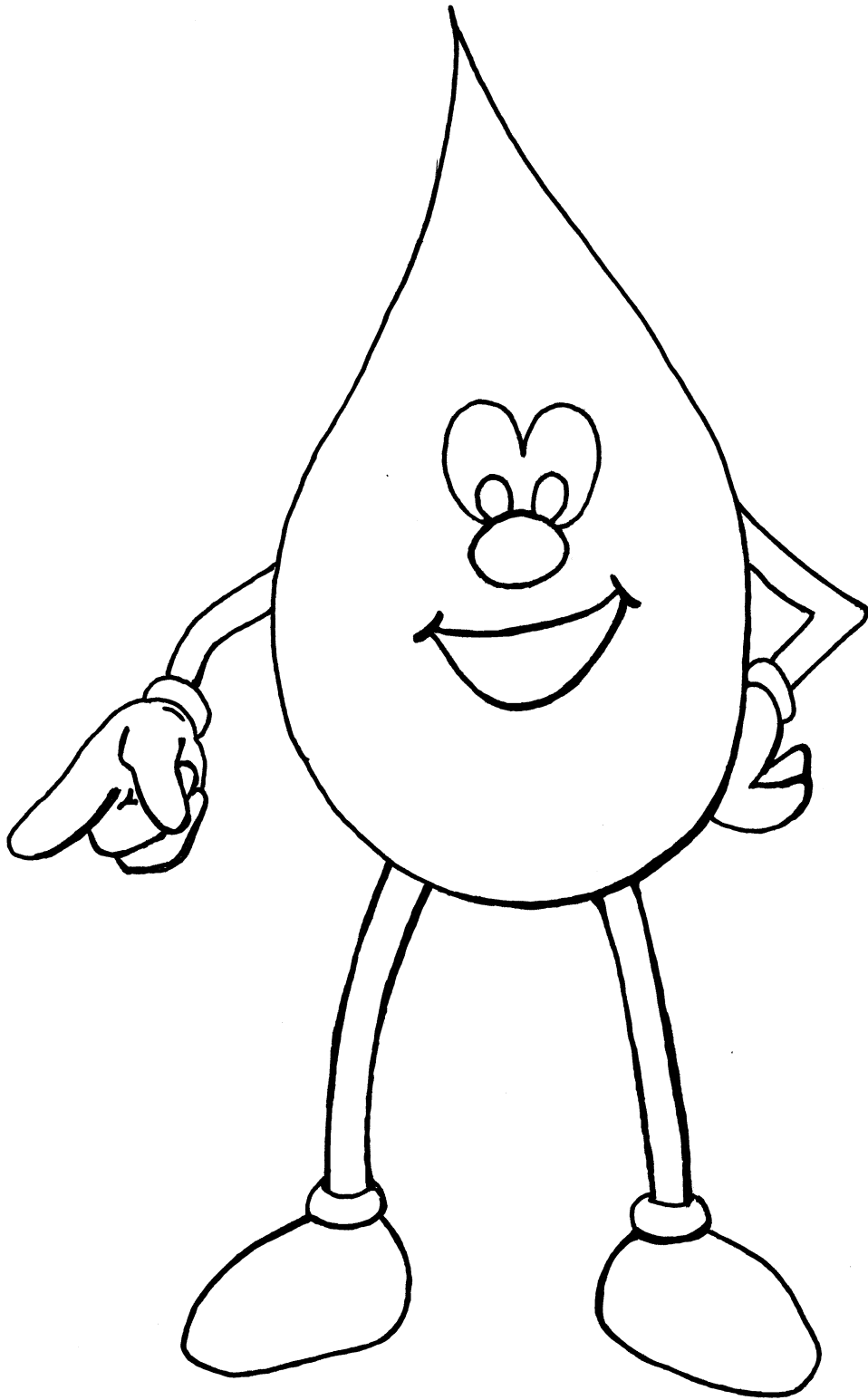
Stormy follows the storm drain to the stream.



Connect the dots to see Stormy reach the stream with a splash! What will he find there?



Look! The stream is already polluted and is making the wildlife sick.



Stormy needs more help from you and your family and friends!

Don't over-**fieterliz** your lawn; always read the directions. _____


Never let **ilo** be dumped onto the ground or poured down storm drains. _____

Cans and bottles should be **ledyrecc**.

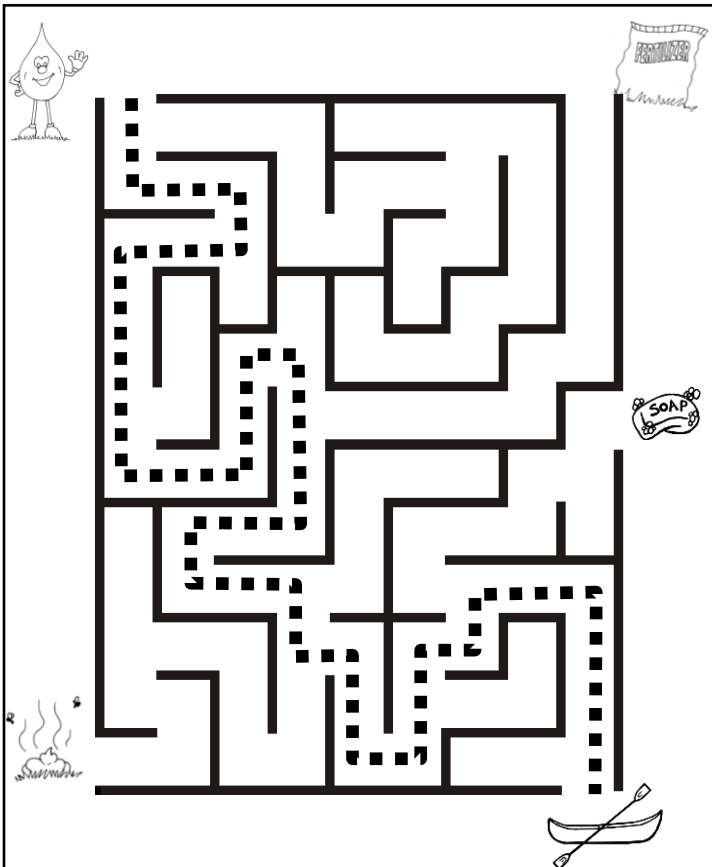
Don't leave **dgo oppo** lying on the ground; always pick up after your pet. _____

Never, ever throw **leitrt** in streets or down storm drains. _____

Unscramble the words to see some of the things you can do to help Stormy keep our streams clean.

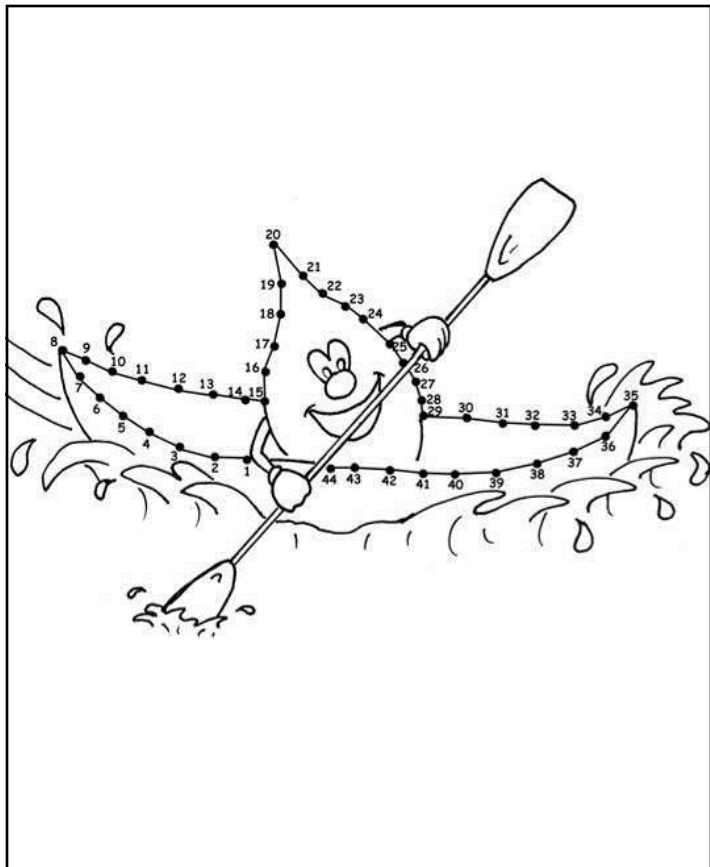


Always remember:
ONLY rain
should go down
the storm
drain!



C A N D Y W R A P P E R
 I P O N A T L A L R A U
 G P R S O D A C A N L C
 A L A T C B A T S C C U
 R E G G E B O T T L E D
 E C T T P E B I I W G B
 T O I L B G S R C O G A
 T R C J U I C E B O X U
 E E I C I L G L A S S E
 B T B U B B L E G U M B
 U S T A J T G C S L M E
 T B A N A N A P E E L U
 T G T I A T T B A L E B

- | | | |
|----------------|------------|-------------|
| candy wrapper | juice box | soda can |
| bubble gum | glass | bottle |
| plastic bags | oil | tire |
| cigarette butt | apple core | banana peel |



Don't over-**fieterliz** your lawn; always read the directions. **f e r t i l i z e**

Never let **ilo** be dumped onto the ground or poured down storm drains. **o i !**

Cans and bottles should be **ledyrecc.**
r e c y c l e d

Don't leave **dgo oppo** lying on the ground; always pick up after your pet. **d o g p o o p**

Never, ever throw **leitrt** in streets or down storm drains. **l i t t e r**

ANSWERS

A decorative border consisting of a continuous line of musical notes, resembling a treble clef staff, framing the entire page.

The Stormy Song

He's Stormy the Raindrop
Where does he go
Once he falls from the clouds
Do you know?

From your lawn to the street to the sewer to the stream
How he hopes you'll help him stay clean!

But when you over-fertilize
He gets phosphorus in his eyes
Oh no! There's dog poop!
Please use a pooper scoop

When oil and candy wrappers
End up in the drain
The aquatic wildlife feel the pain

He's Stormy the Raindrop
Where does he go
Once he falls from the clouds
Do you know?

From your lawn to the street to the sewer to the stream
How he hopes you'll help him stay clean!

Printed on 100% recycled paper



For more information on how you can help prevent stormwater pollution, visit the Fairfax County Stormwater Planning Division's Web site:

<http://www.fairfaxcounty.gov/dpwes/stormwater/>

Department of Public Works and Environmental Services
Stormwater Planning Division
12000 Government Center Parkway Suite 449
Fairfax, VA 22035
703-324-5500 phone
703-802-5955 fax

To request this information in an alternate format, call
703-324-5500, TTY 711

A special "Thank you" to Don Lacquement (song & concept), LeAnne Astin (story & layout) and Eric Forbes (artwork)



A Fairfax County, Va., publication
Printed May 2012