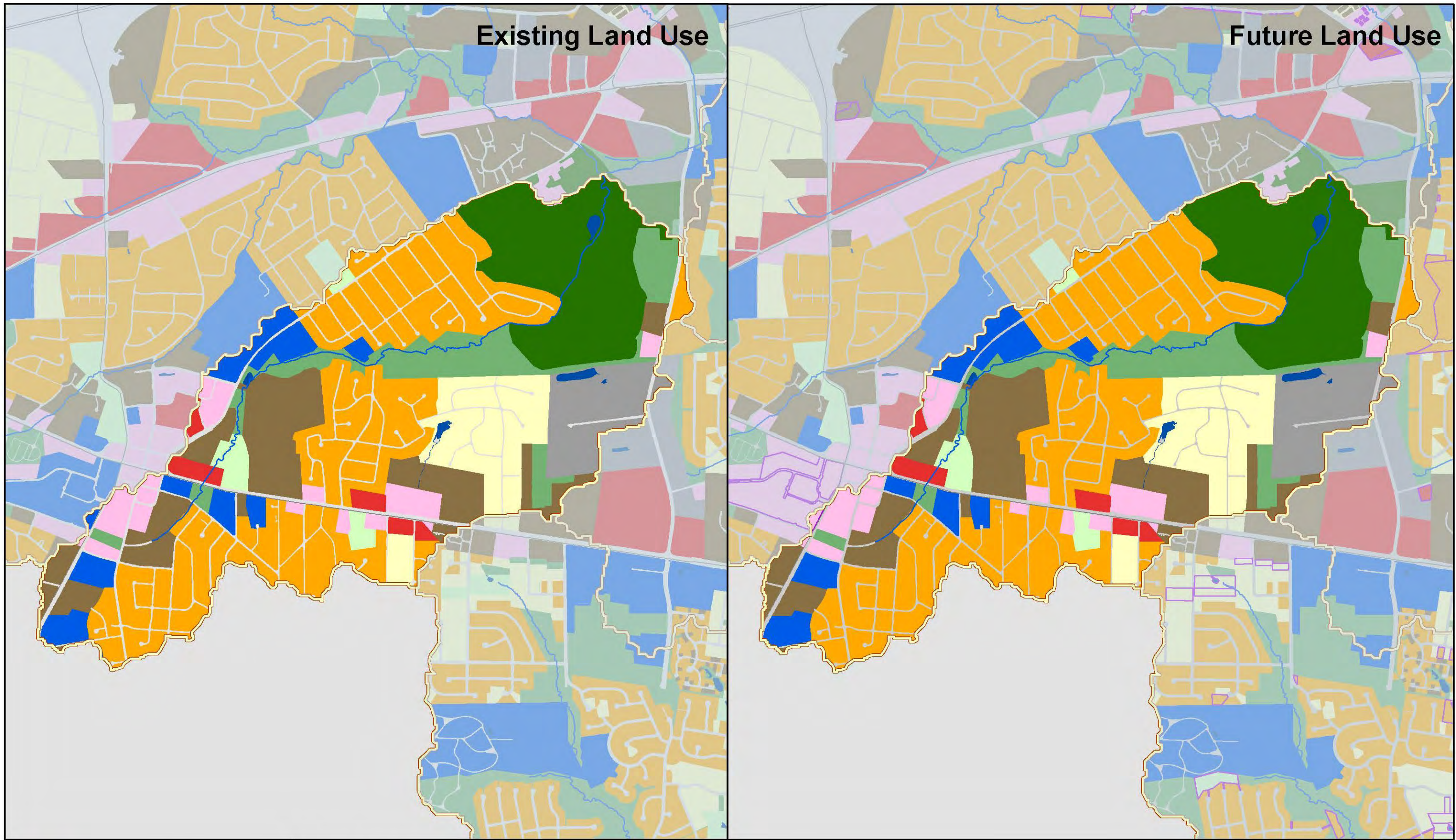


Existing Land Use

Future Land Use



Land Use

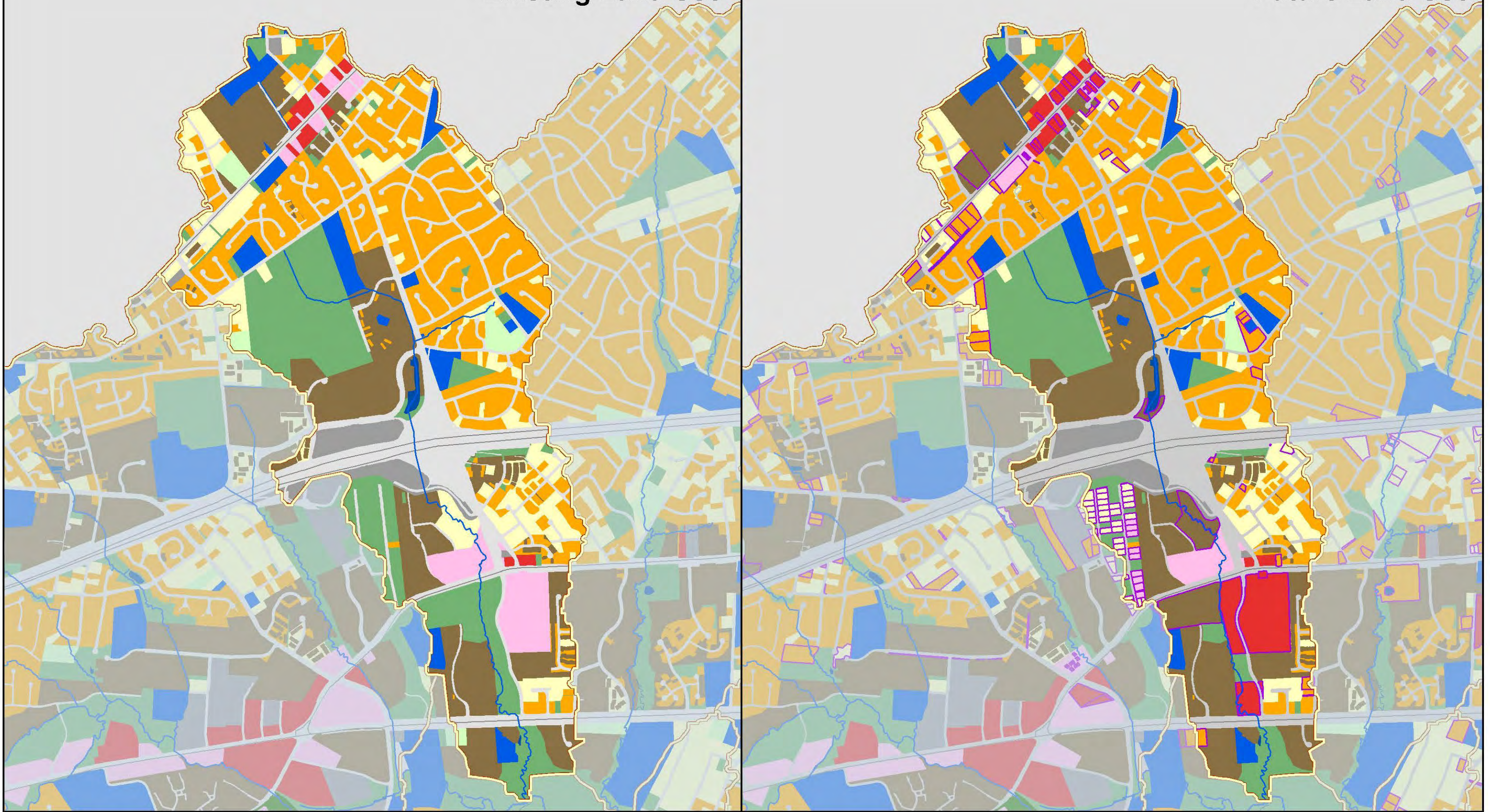
- | | | | |
|--------------------------|---------------------------|----------------------------|--------------------|
| Estate Residential | High Intensity Commercial | Low Density Residential | Open Space |
| Golf Course | Industrial | Low Intensity Commercial | Transportation |
| High Density Residential | Institutional | Medium Density Residential | Water |
| | | WMA Boundary | Change in Land Use |

Map 2-11

Land Use Map
Daniels Run

Existing Land Use

Future Land Use



Land Use

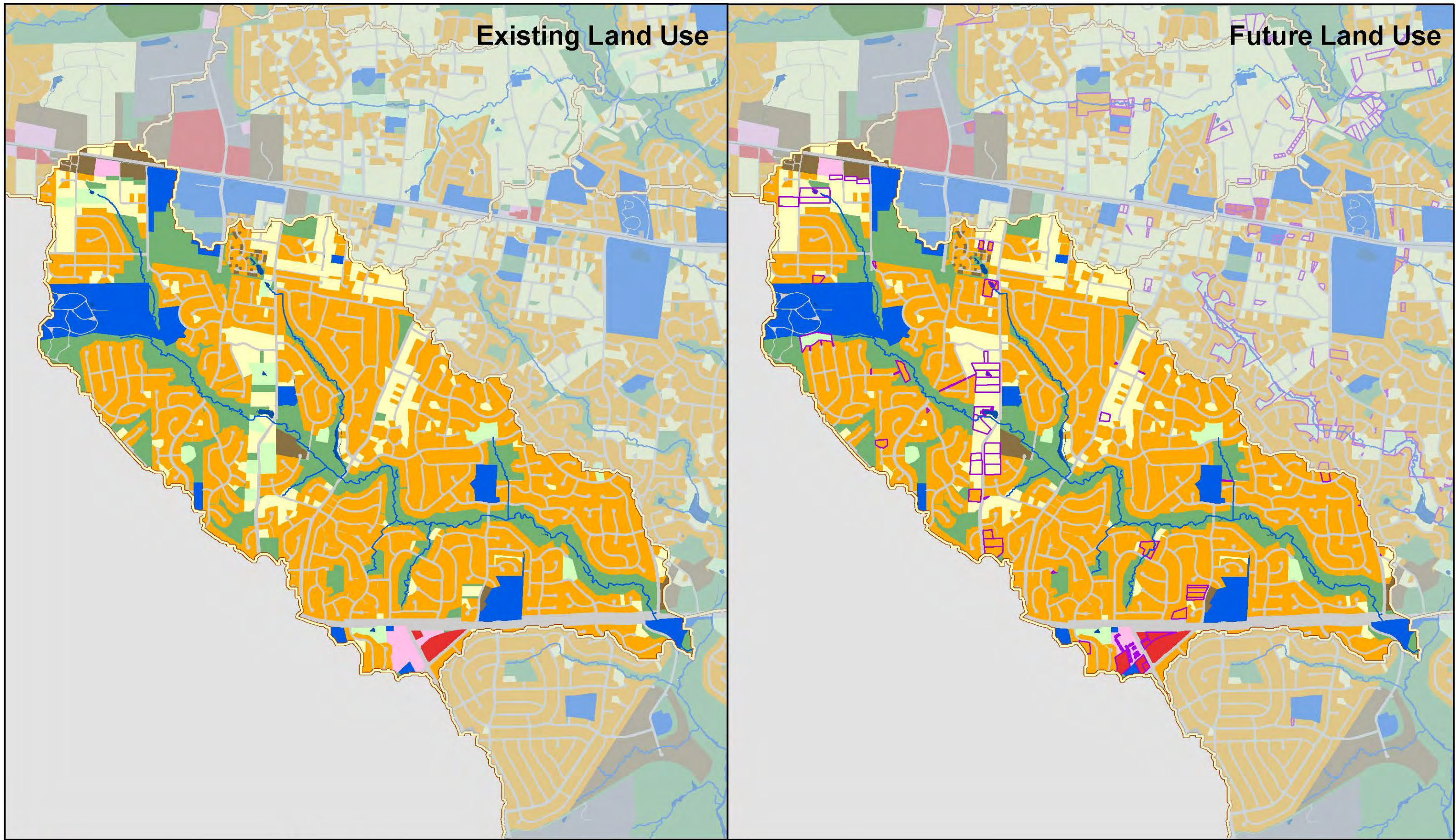
- | | | | |
|--------------------------|---------------------------|----------------------------|--------------------|
| Estate Residential | High Intensity Commercial | Low Density Residential | Open Space |
| Golf Course | Industrial | Low Intensity Commercial | Transportation |
| High Density Residential | Institutional | Medium Density Residential | Water |
| | | | WMA Boundary |
| | | | Change in Land Use |

Map 2-12

Land Use Map
Hunters Branch

Existing Land Use

Future Land Use

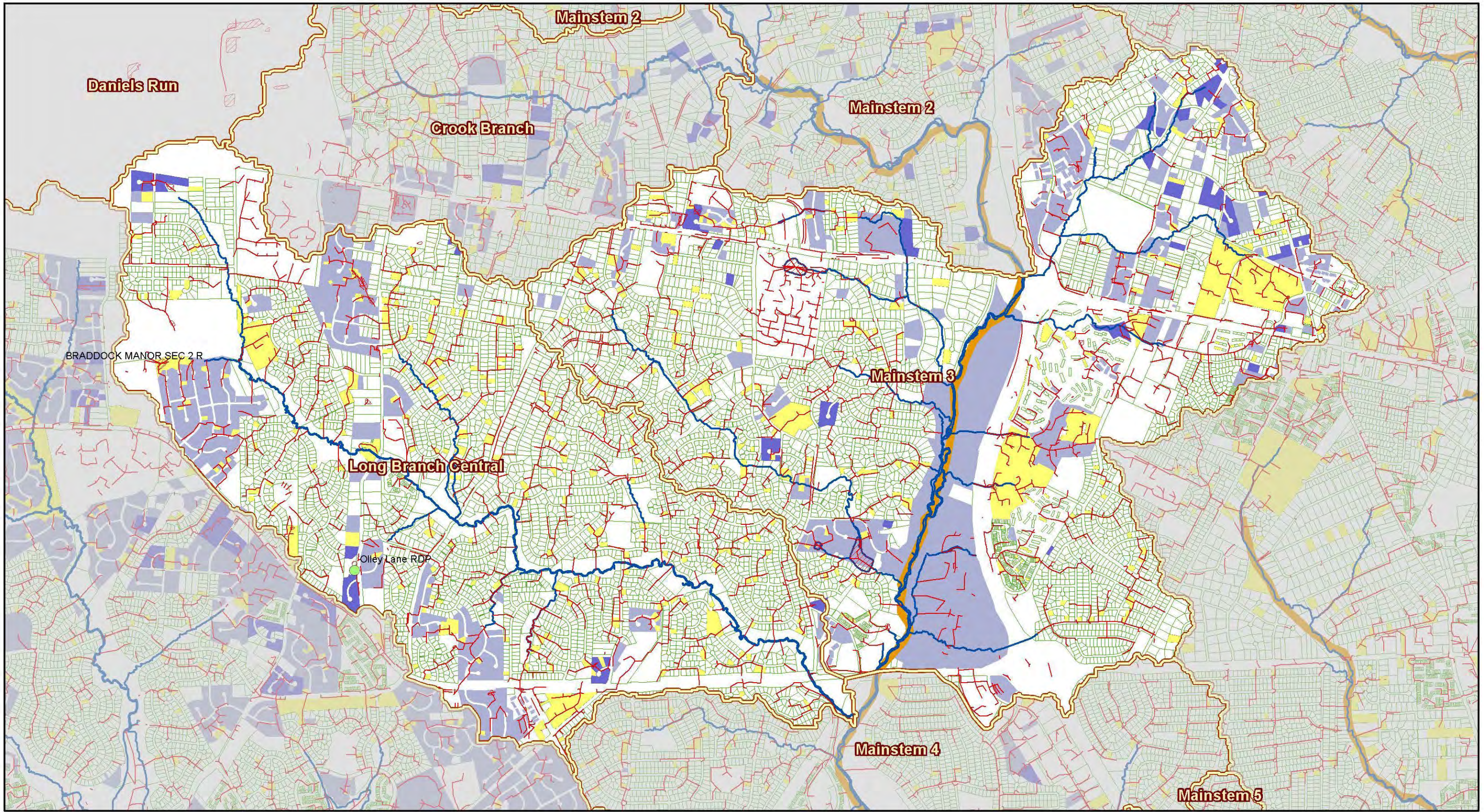


Land Use

- | | | | | |
|--------------------------|---------------------------|----------------------------|----------------|--------------------|
| Estate Residential | High Intensity Commercial | Low Density Residential | Open Space | WMA Boundary |
| Golf Course | Industrial | Low Intensity Commercial | Transportation | Change in Land Use |
| High Density Residential | Institutional | Medium Density Residential | Water | |

Map 2-13

Land Use Map
Long Branch Central



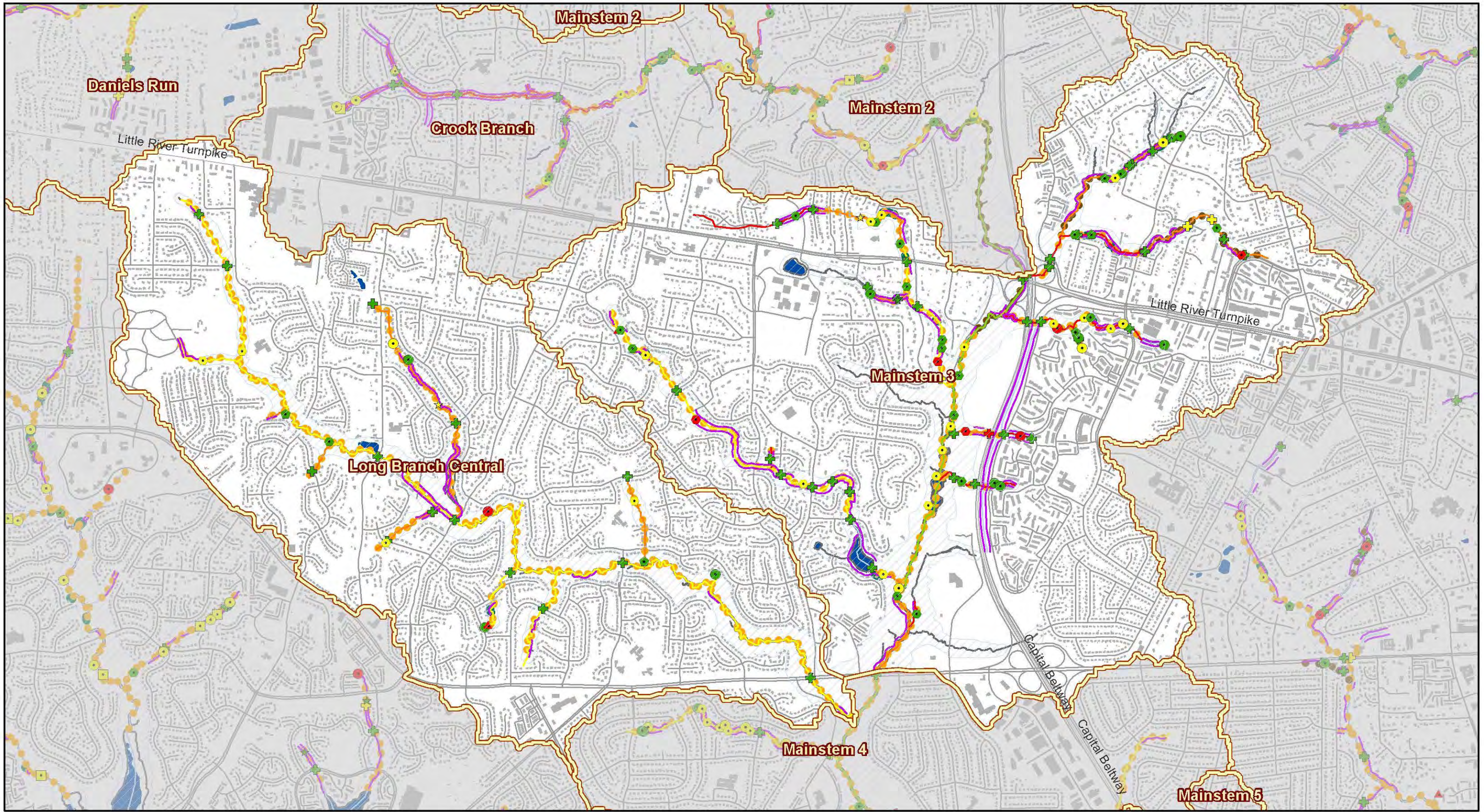
0 0.25 0.5 Miles

- | | | | |
|---------------------|-----------------------|----------------------|---|
| WMA Boundary | Regional Ponds | Subarea | MSMD Flooding/Drainage Complaints |
| 303d Listed Streams | Constructed | Quantity and Quality | STMDRN; SWM/BMP |
| Stormnet Facilities | Planned | Quantity | Public Identified Problem Areas 2003 - 2006 |
| Stormnet Arcs | | | |
| Parcels | | | |

Map 2-14

Stormwater Infrastructure Map

Long Branch Central
Mainstem 3



0 0.25 0.5 Miles

Obstruction Impact	Dump Site Impact	Pipe Impact	Ditch Impact	Utility Impact	Crossing Impact	Head Cut Height
Minor to Moderate	Minor to Moderate	Minor to Moderate	Minor to Moderate	Minor to Moderate	Minor to Moderate	0.5' - 1.0'
Moderate to Severe	Moderate to Severe	Moderate to Severe	Moderate to Severe	Moderate to Severe	Moderate to Severe	1' - 2'
Severe to Extreme	Severe to Extreme	Severe to Extreme	Severe to Extreme	Severe to Extreme	Severe to Extreme	>2'

Habitat Rating			CEM Category	
Excellent	Fair	Very Poor	CEM 2 - Incising	
Good	Poor	Unassessed	CEM 3 - Widening	

Resource Protection Area (RPA)	Lakes and Ponds	Deficient Buffer
WMA Boundary	Erosion	

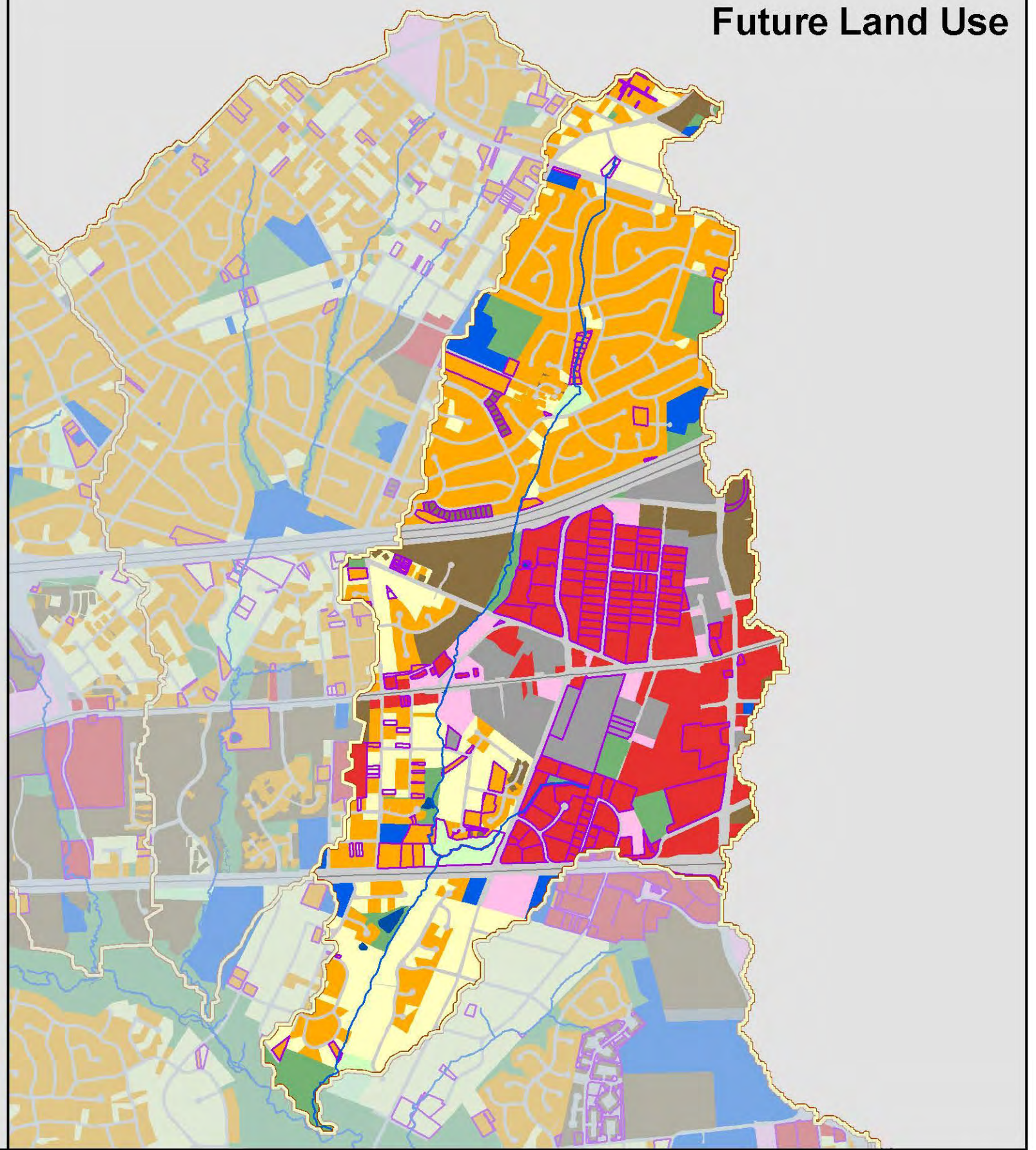
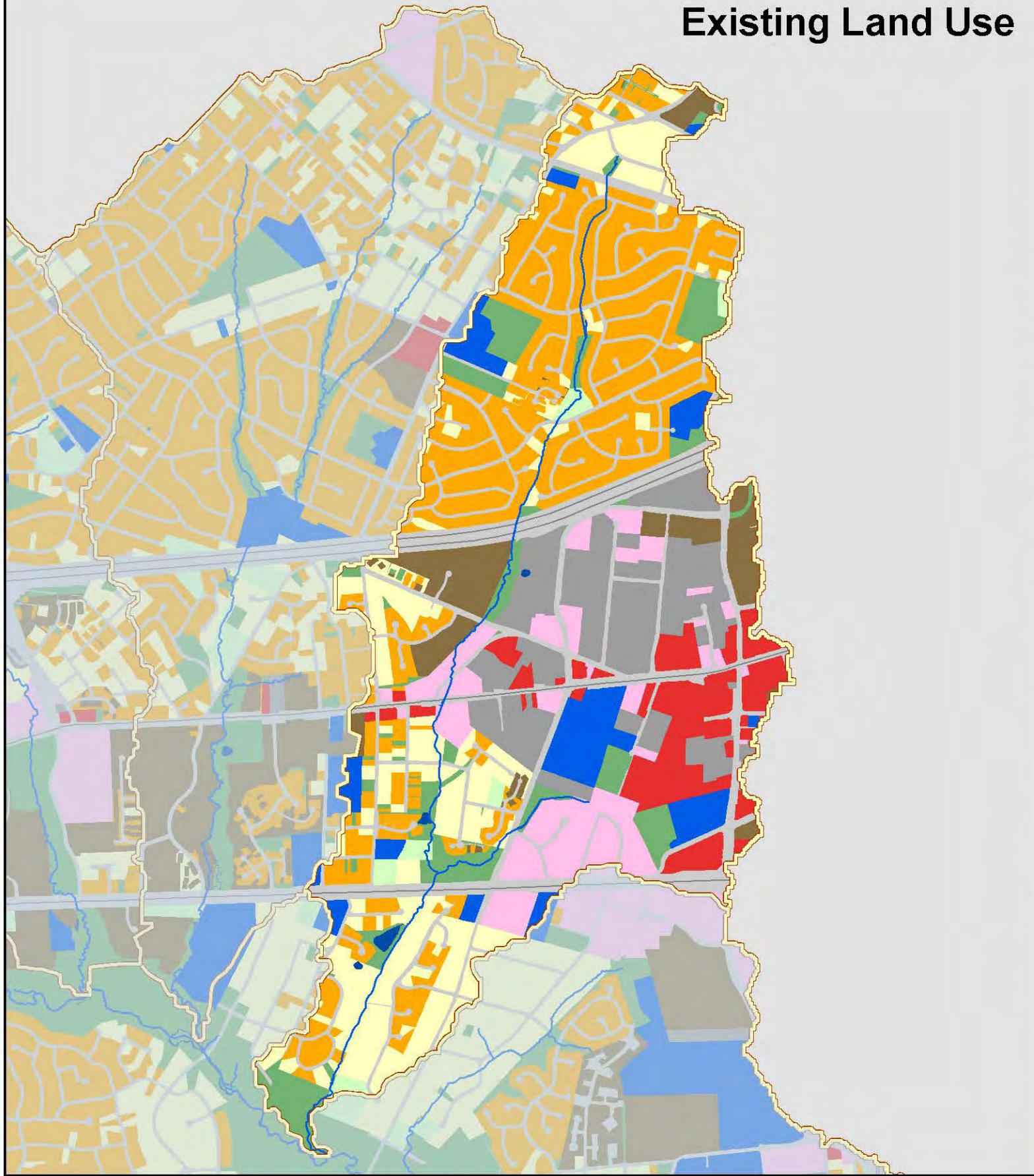
Map 2-15

Stream Condition Map

Long Branch Central
Mainstem 3

Existing Land Use

Future Land Use



Land Use

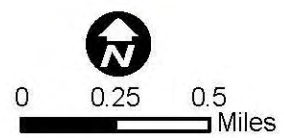
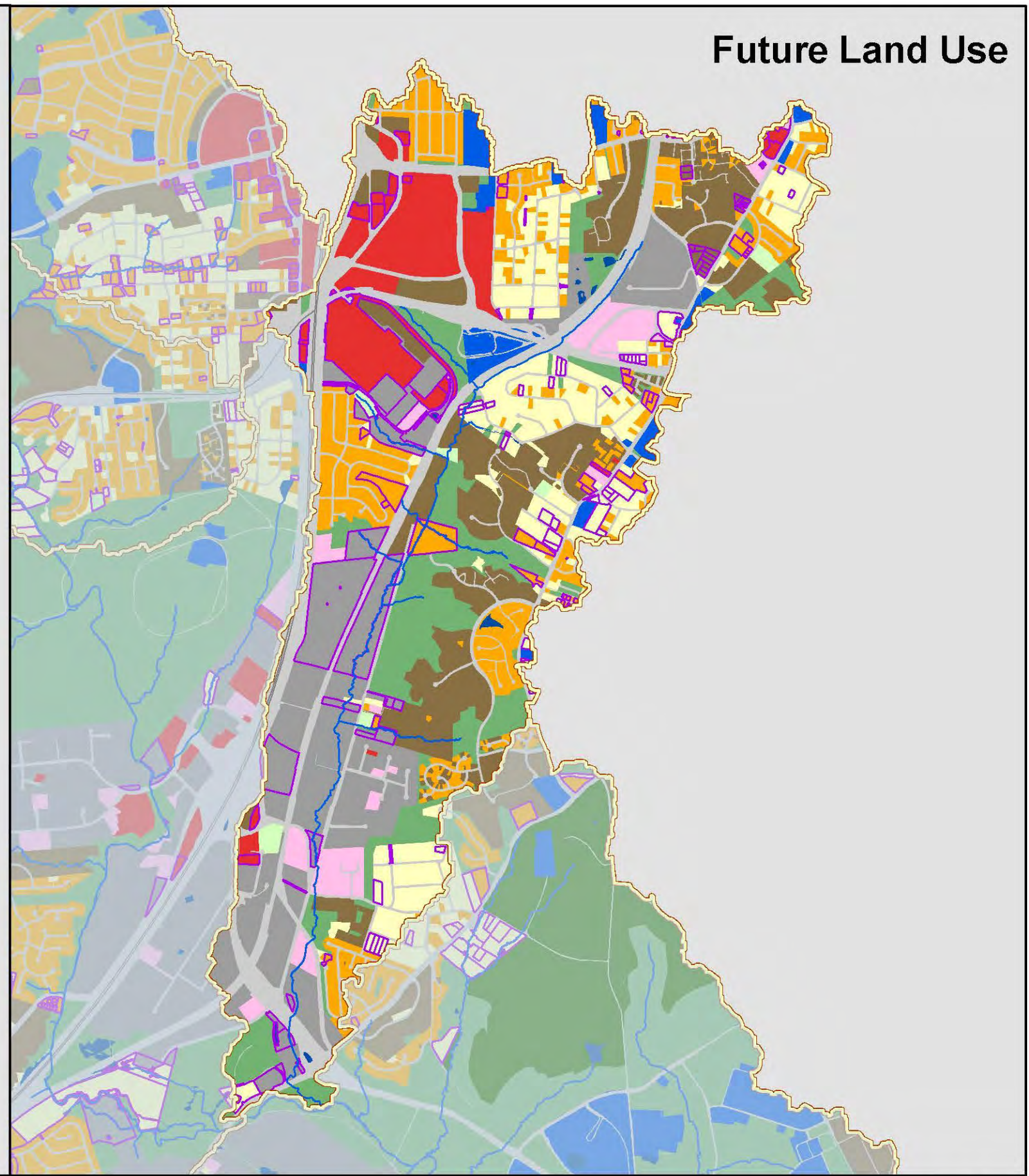
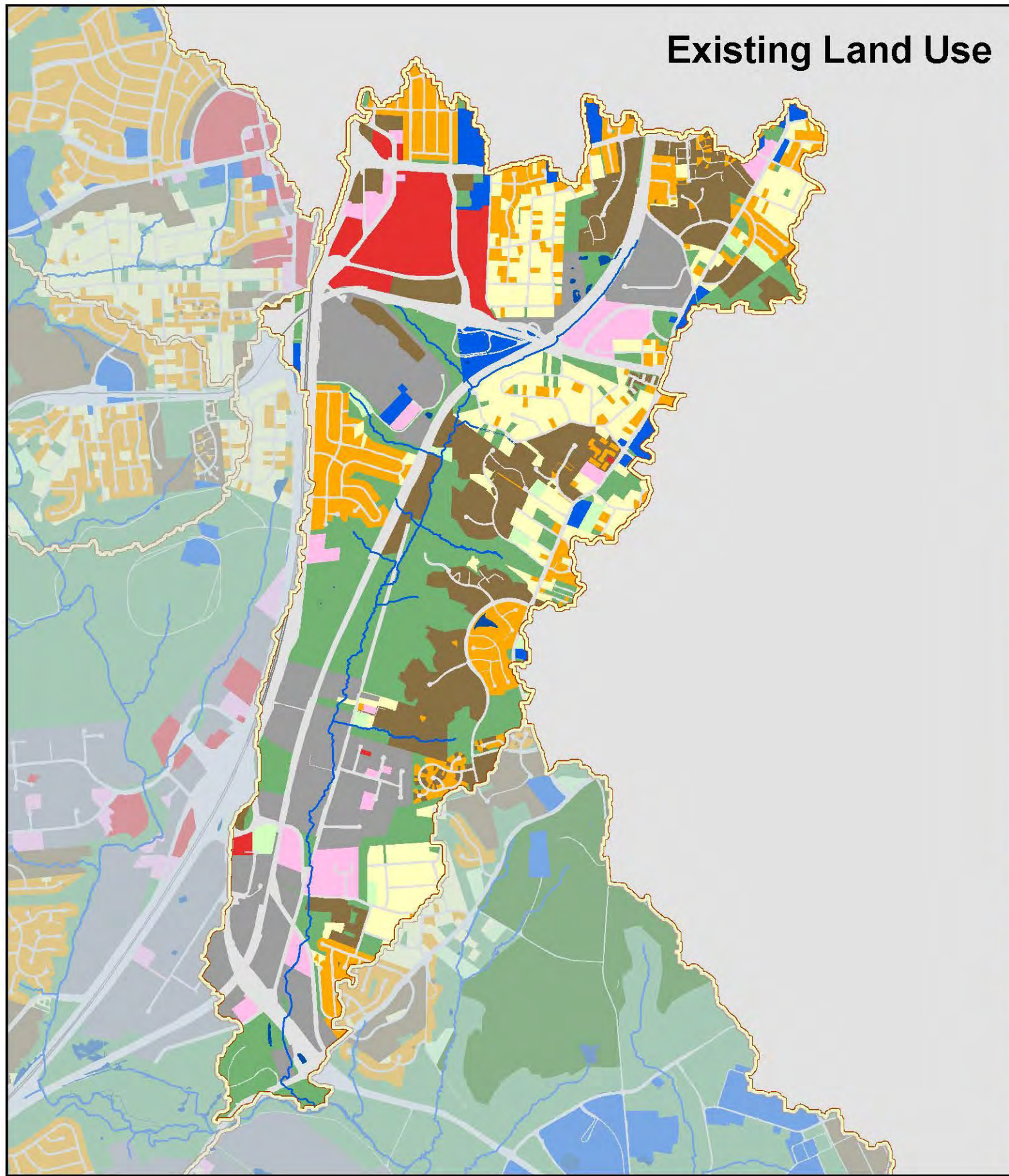
- | | | | | |
|--------------------------|---------------------------|----------------------------|----------------|--------------------|
| Estate Residential | High Intensity Commercial | Low Density Residential | Open Space | WMA Boundary |
| Golf Course | Industrial | Low Intensity Commercial | Transportation | Change in Land Use |
| High Density Residential | Institutional | Medium Density Residential | Water | |

Map 2-16

Land Use Map
Long Branch North

Existing Land Use

Future Land Use

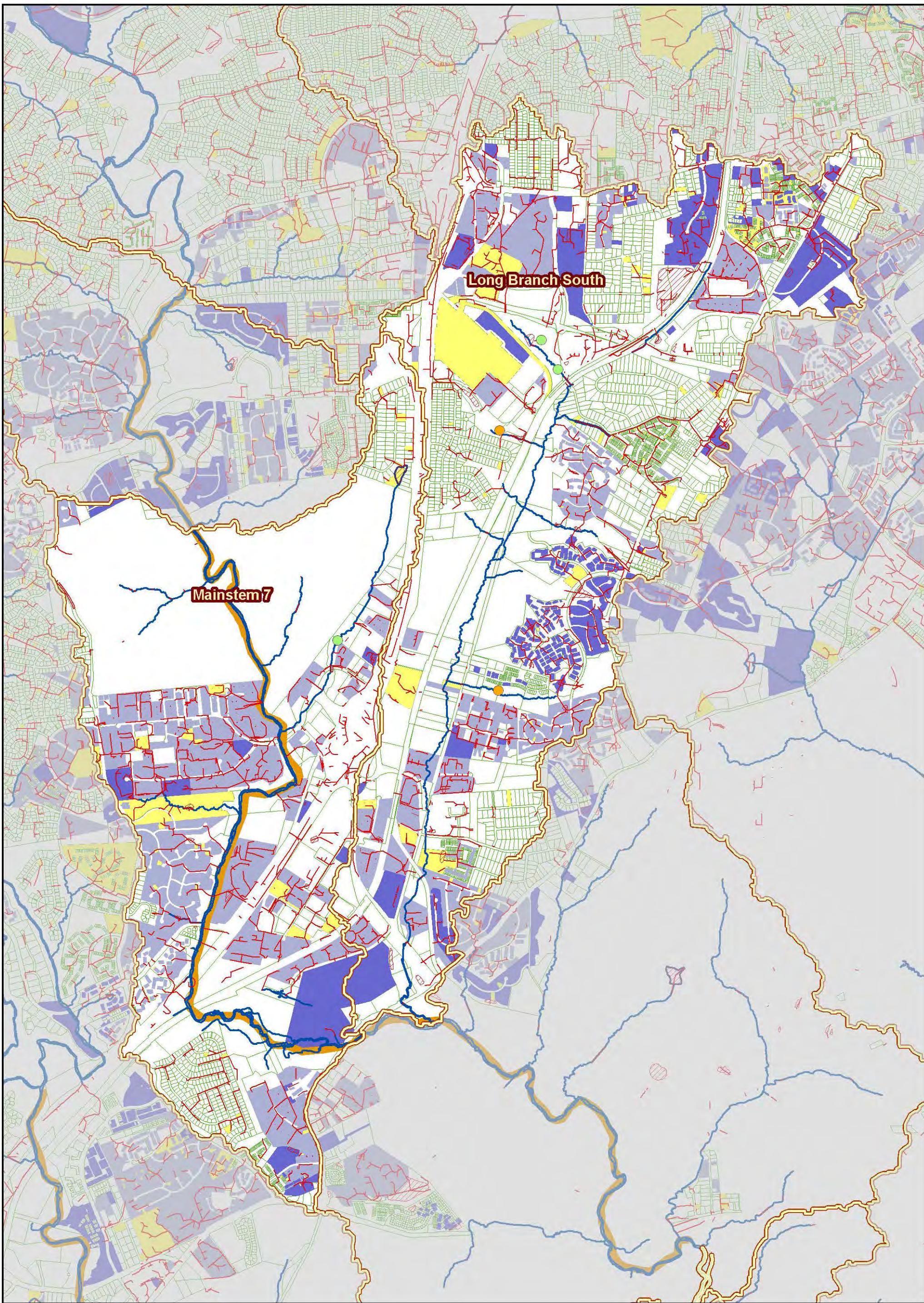


Land Use

- | | | | |
|--------------------------|---------------------------|----------------------------|--------------------|
| Estate Residential | High Intensity Commercial | Low Density Residential | Open Space |
| Golf Course | Industrial | Low Intensity Commercial | Transportation |
| High Density Residential | Institutional | Medium Density Residential | Water |
| | | | WMA Boundary |
| | | | Change in Land Use |

Map 2-17

Land Use Map
Long Branch South



Long Branch South

Mainstem 7



0 0.25 0.5 Miles

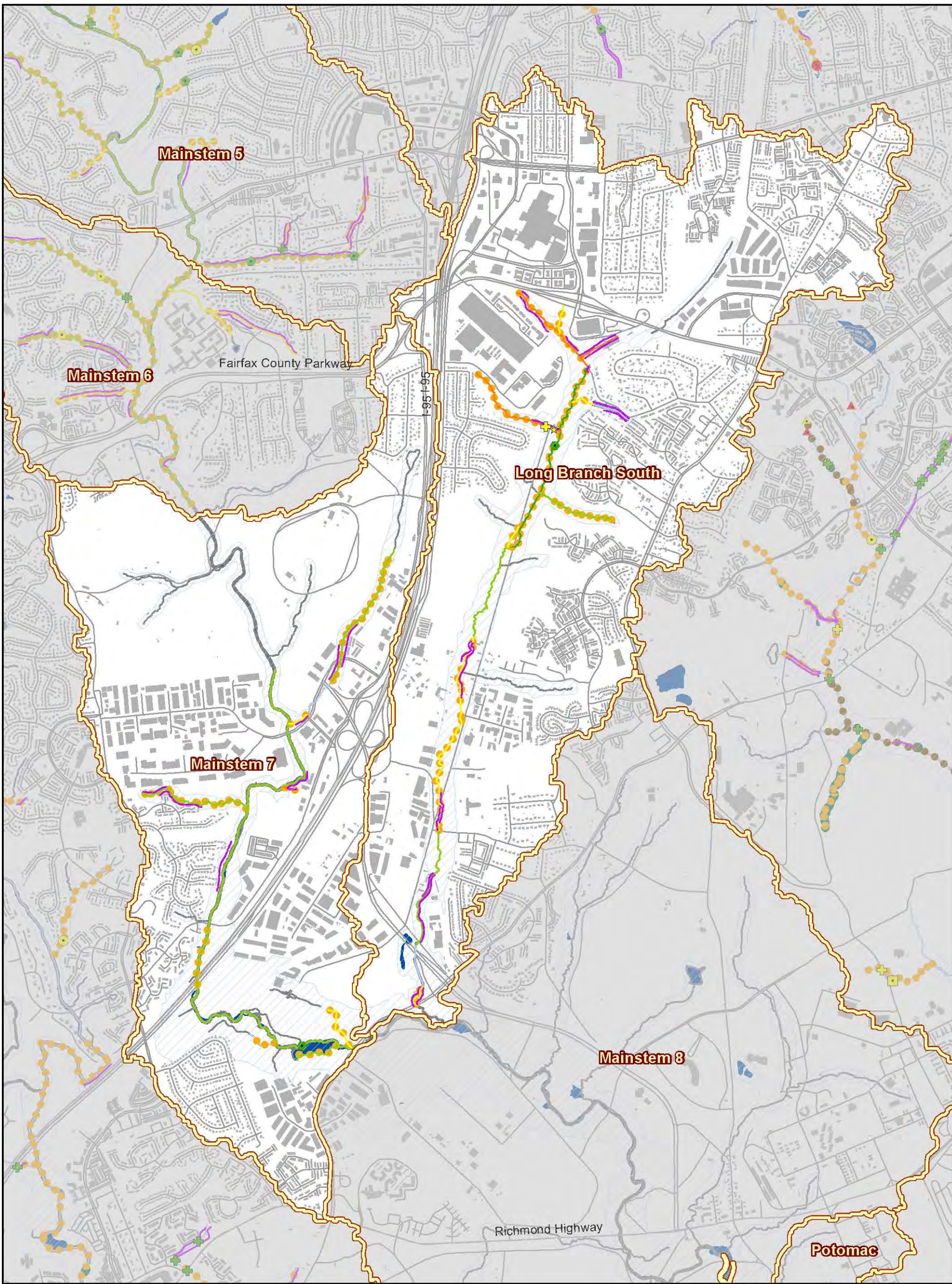
- WMA Boundary
- 303d Listed Streams
- Stormwater Facilities
- Stormwater Pipes
- Parcels
- MSMD Flooding/Drainage Complaints
- Public Identified Problem Areas 2003 - 2006

- Regional Ponds**
- Constructed
- Planned
- BMP Control Type**
- Quantity and Quality
- Quantity

Map 2-18

Stormwater Infrastructure Map

Mainstem 7
Long Branch South



0 0.25 0.5 Miles

Obstruction Impact ● Minor to Moderate ● Moderate to Severe ● Severe to Extreme	Head Cut Height ▲ 0.5' - 1.0' ▲ 1' - 2' ▲ >2'	Ditch Impact ■ Minor to Moderate ■ Moderate to Severe ■ Severe to Extreme	Crossing Impact + Minor to Moderate + Moderate to Severe + Severe to Extreme
Dump Site Impact ★ Minor to Moderate ★ Moderate to Severe ★ Severe to Extreme	Pipe Impact ● Minor to Moderate ● Moderate to Severe ● Severe to Extreme	Utility Impact ◆ Minor to Moderate ◆ Moderate to Severe ◆ Severe to Extreme	□ WMA Boundary □ Resource Protection Area (RPA) ■ Lakes and Ponds ■ Deficient Buffer ■ Erosion
Habitat Rating — Excellent — Good — Fair — Poor — Very Poor — Unassessed	CEM Category ● CEM 2 - Incising ● CEM 3 - Widening		

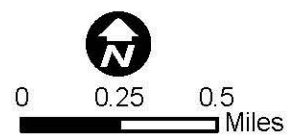
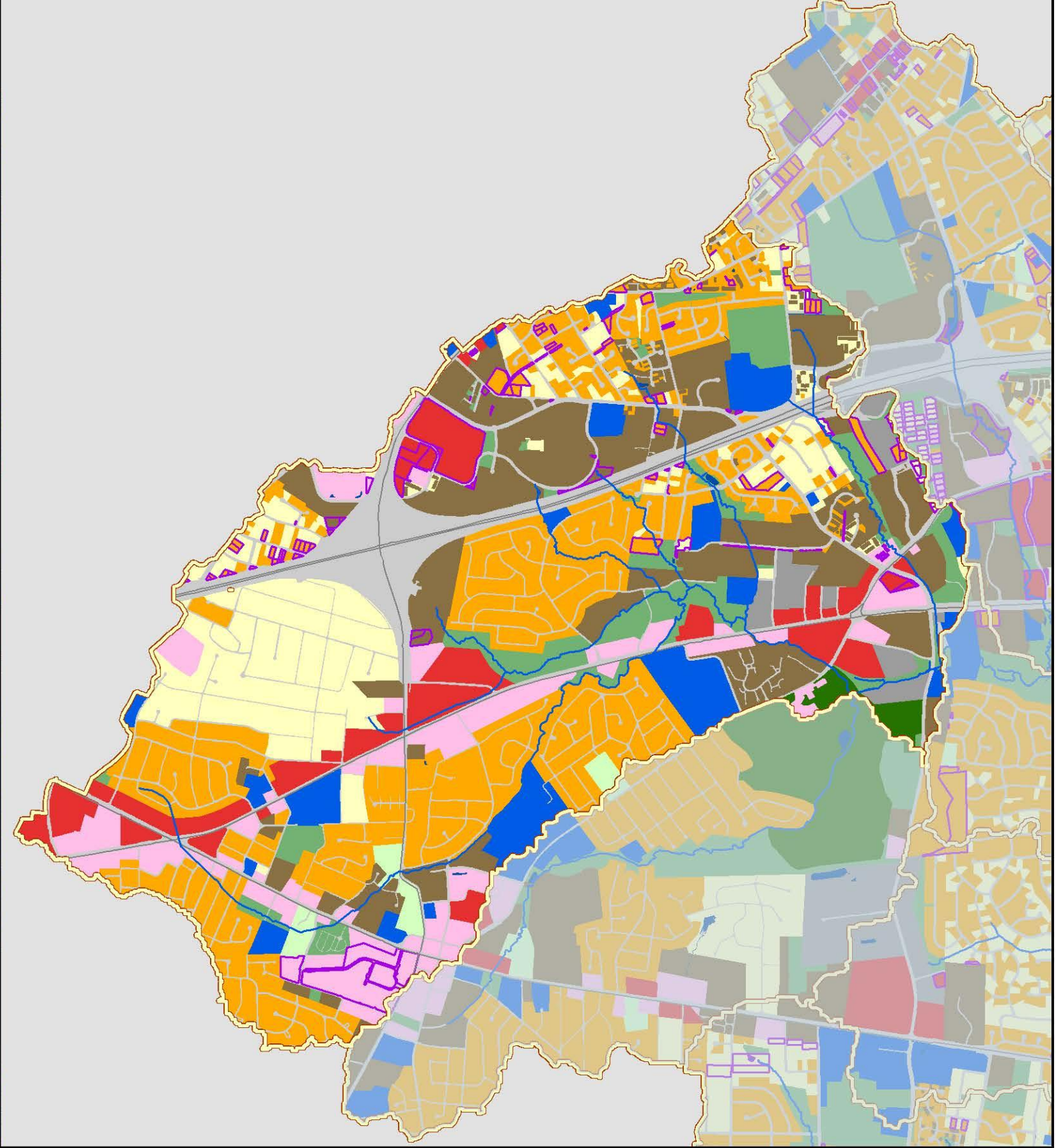
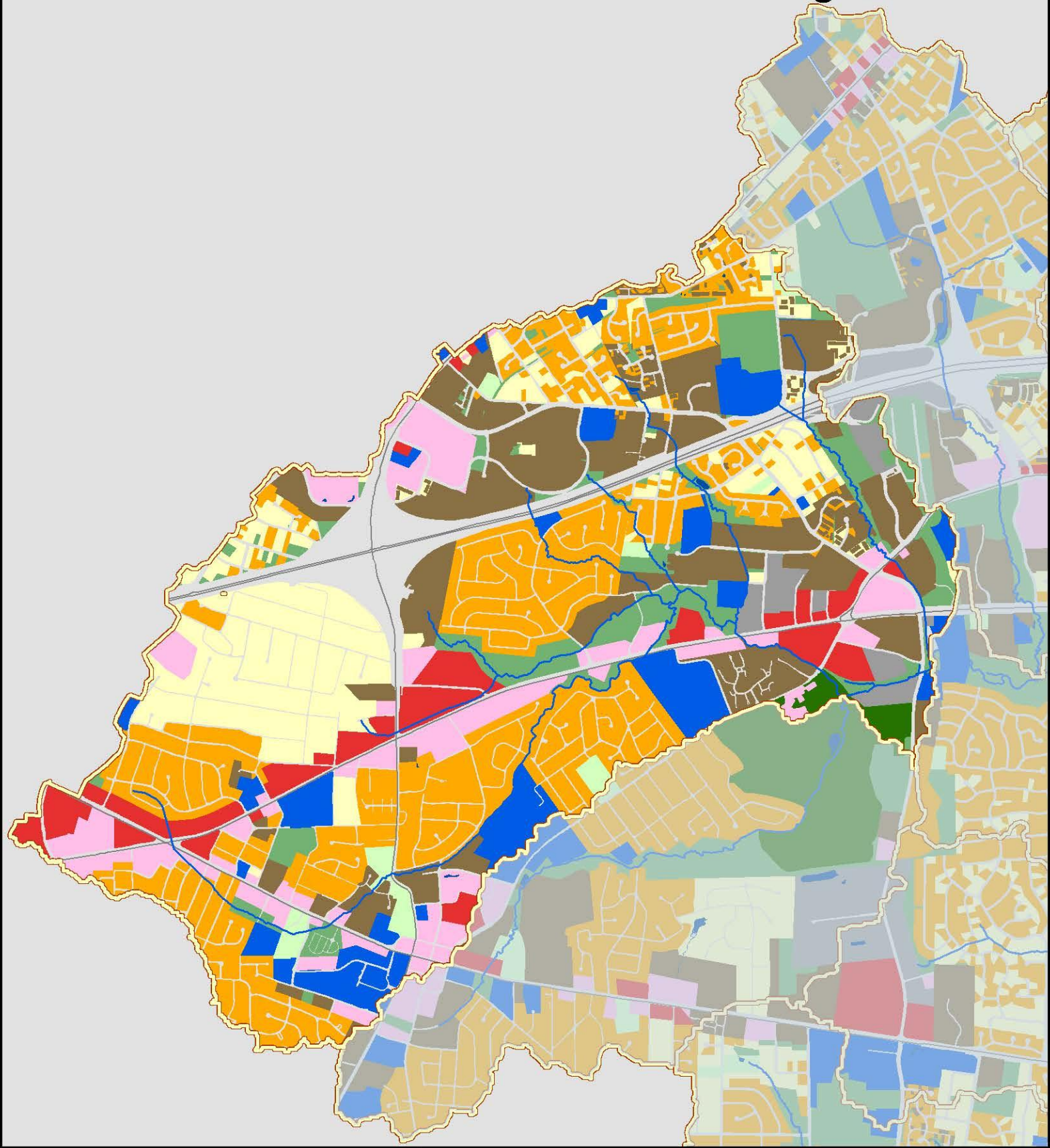
Map 2-19

Stream Condition Map

Mainstem 7
Long Branch South

Existing Land Use

Future Land Use



Land Use

- | | | | | |
|--------------------------|---------------------------|----------------------------|----------------|--------------------|
| Estate Residential | High Intensity Commercial | Low Density Residential | Open Space | WMA Boundary |
| Golf Course | Industrial | Low Intensity Commercial | Transportation | Change in Land Use |
| High Density Residential | Institutional | Medium Density Residential | Water | |

Map 2-20

Land Use Map
Mainstem 1